

Job Name: 25-4299 - Seneca High School
 Job Location: Louisville, KY
 Contractor: Dan Cristiani Excavating Co. Inc.

Plant: 100
 2/13/2026 1:01:25 PM

Tech: J. Horsley
 PC: J. Jarvis



Structure ID: B7

P1 MH048BA30

MH BASE T/n

- P4) 24" - CASTING HEIGHT - 7"
- P3) 24" - GRADE RING F/F - 3"
- P2) 48" - MH FLAT TOP w/ 24" ECC Hole F/G - 12"
- P1) 48" - MH BASE T/n - 30"
- 1) 48" - Conseal CS-102 1.00"
- 2) Hole - 20
- 1) Hole - 12
- 3) MH Step ML-10-TDS-NCR - 10"

0 lb
 202 lb
 1561 lb
 3108 lb
 0 lb
 0 lb
 0 lb
 0 lb

 4871 lb

Structure Total:

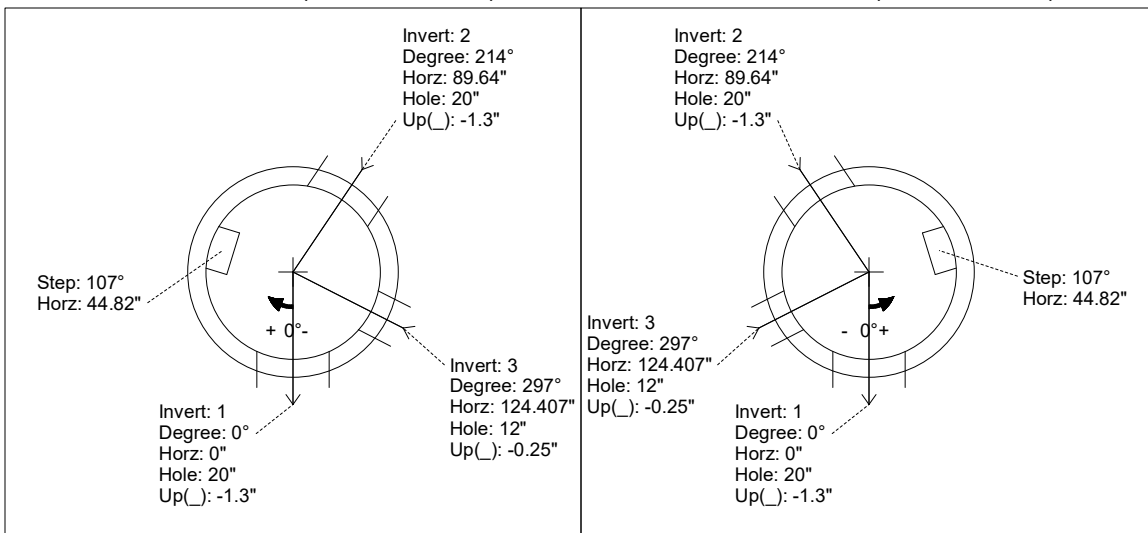
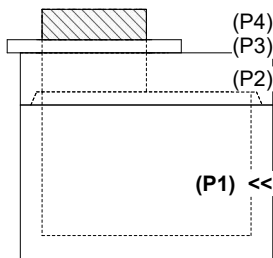
- Structure Notes:**
1. PER LOUISVILLE MSD / ASTM C-478 SPECIFICATIONS
 2. CONCRETE: 4,000 PSI AT 28 DAYS
 3. REINFORCEMENT: PER ASTM A615
 4. NO STORM INVERT
 5. STEPS AT 107 DEGREES
 6. HOE MC-420 FRAME & COVER "STORM LOU-MSD" SUPPLIED BY OTHERS

Rim: 488.1' Rim to Invert: 4.4' Slack: 0.8" Sump: 0" Step Position: 107°

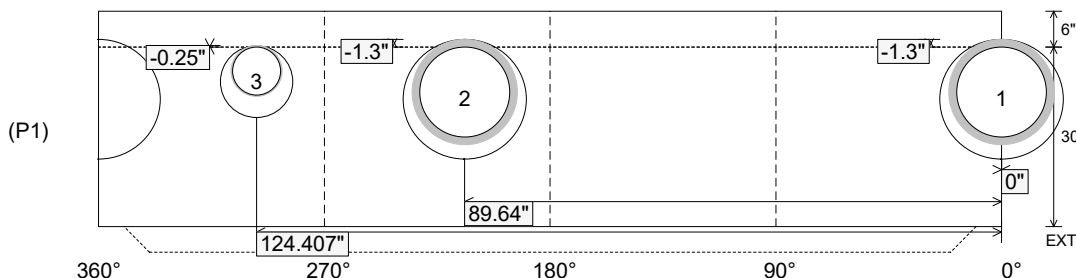
Position	Elev	Angle	Ext. (cw)	Pipe	Pipe OD	Connector	Hole	Horz Size	Up ()	Offset
Invert 1	483.7'	0°	0"	15" HDPE	17.6"	Hole 20	20"	20.629"	-1.3"	0"
Invert 2	483.7'	214°	108.315"	15" HDPE	17.6"	Hole 20	20"	20.629"	-1.3"	0"
Invert 3	483.7'	297°	150.325"	8" PVC SDR35	8.5"	Hole 12	12"	12.129"	-0.25"	0"
Invert 4										
Invert 5										
Invert 6										
Invert 7										
Invert 8										

RIGHT-SIDE UP VIEW (int. dimensions)

UPSIDE-DOWN VIEW (int. dimensions)



INSIDE WALL DIMENSIONS



Coating (Int):
 Coating (Ext):

Seam Up: Tongue
 Seam Dn: n/a

Wall Thickness: 5"
 Floor Height: 6"

Height (Int): 30"
 Height (Ext): 36"

Weight (Net): 3108 lb
 Volume (Net): 0.79cu.yd