

Job Name: 25-4299 - Seneca High School
 Job Location: Louisville, KY
 Contractor: Dan Cristiani Excavating Co. Inc.

Plant: 100
 2/13/2026 1:02:54 PM

Tech: J. Horsley
 PC: J. Jarvis



Structure ID: B5

P2 MH048LD07-2424 LOUMSD

MH FLAT TOP w/24"x24" Hole LOU-MSD F/F

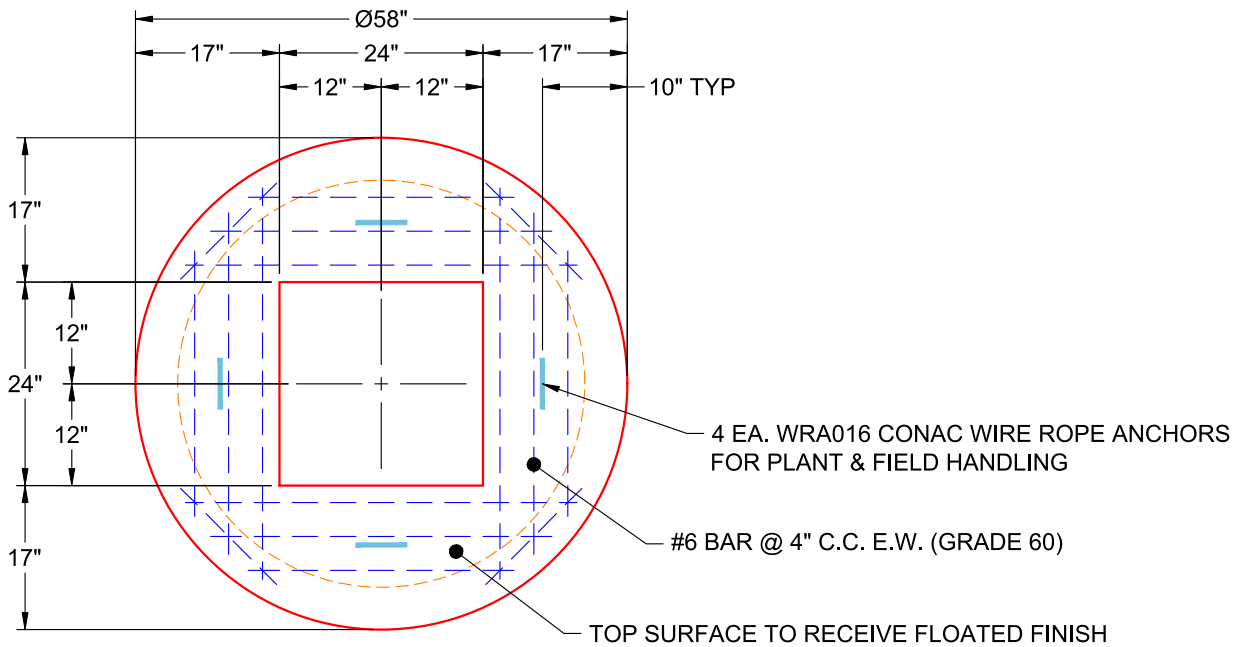
- P3) 24" x 24" - CASTING HEIGHT - 4"
- P2) 48" - MH FLAT TOP w/24"x24" Hole LOU-MSD F/F - 7"
- P1) 48" - MH BASE Custom Ht F/n - 32"
- 1) 48" - Conseal CS-102 1.00"
- 1) 24" x 24" - Conseal CS-102 1.00"
- 2) Hole - 24"
- 1) Hole - 20"
- 3) MH Step ML-10-TDS-NCR - 10"

0 lb
 1214 lb
 3036 lb
 0 lb
 0 lb
 0 lb
 0 lb
 0 lb
 0 lb

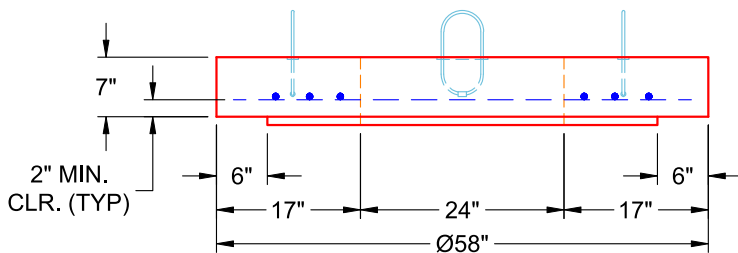
 4250 lb

Structure Total:

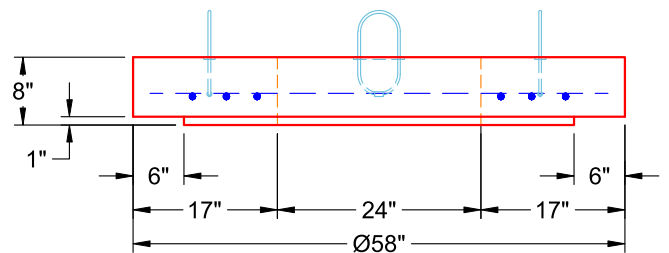
- Structure Notes:
1. PER LOUISVILLE MSD / ASTM C-478 SPECIFICATIONS
 2. CONCRETE: 4,000 PSI AT 28 DAYS
 3. REINFORCEMENT: #6 BAR @ 4" C.C. E.W. (GRADE 60) - 2" MIN. REBAR CLEARANCE (TYP)
 4. HOE 280T ADA FRAME & GRATE SUPPLIED BY OTHERS
 5. LIFTERS: 4 EA. WRA016 CONAC WIRE ROPE ANCHORS FOR PLANT & FIELD HANDLING
 6. TOP SURFACE TO RECEIVE FLOATED FINISH



**PLAN VIEW
(RIGHT SIDE UP)**



**FRONT VIEW
(RIGHT SIDE UP)**



**SIDE VIEW
(RIGHT SIDE UP)**

Coating (Int):
 Coating (Ext):

Seam Up: Flat
 Seam Dn: Flat

Wall Thickness: 5"

Height (Ext): 7"

Weight (Net): 1214 lb
 Volume (Net): 0.31cu.yd