

Job Name: 25-4299 - Seneca High School
Job Location: Louisville, KY
Contractor: Dan Cristiani Excavating Co. Inc.

PC: J. Jarvis
 TECH: J. Horsley
 Plant: 100



Structure ID: **B11**
 Spec: MSD
 Type: MH TYPE 1
 Size: 48"

Rim: 488.1'
 Invert: 484.25'
 Rim to Invert: 3.85'

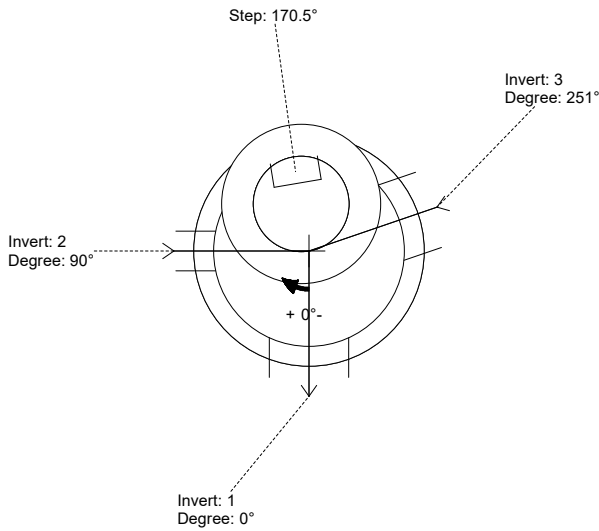
Sump: 0"
 Floor (Top): 484.25'
 Floor Height: 6"

Floor (Bot): 483.75'
 Overall Height: 4.333'
 Slack: 0.2"

- Structure Notes:**
- PER LOUISVILLE MSD / ASTM C-478 SPECIFICATIONS
 - CONCRETE: 4,000 PSI AT 28 DAYS
 - REINFORCEMENT:
 - FLAT LID: #4 BAR @ 10" C.C. E.W. (GRADE 60)
 - BASE: PER ASTM A615
 - NO STORM INVERT
 - STEPS AT 170.5 DEGREES
 - HOE MC-420 FRAME & COVER "STORM LOU-MSD" SUPPLIED BY OTHERS

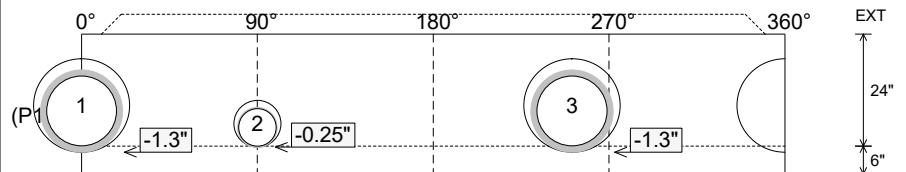
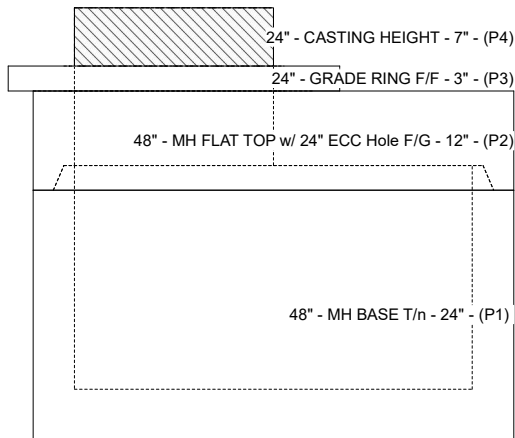
STRUCTURE SUMMARY:

- P4) 24" - CASTING HEIGHT - 7" 0 lb
 - P3) 24" - GRADE RING F/F - 3" 202 lb
 - P2) 48" - MH FLAT TOP w/ 24" ECC Hole F/G - 12" 1561 lb
 - P1) 48" - MH BASE T/n - 24" 2703 lb
 - 1) 48" - Conseal CS-102 1.00" 0 lb
 - 2) Hole - 20 0 lb
 - 1) Hole - 10 0 lb
 - 2) MH Step ML-10-TDS-NCR - 10" 0 lb
- Structure Total: 4467 lb**



Position	Elev	Angle	Pipe	Pipe OD	Hole	Connector	Up (")	Ref
Rim	488.1'							
Reducer								
Invert 1	484.25'	0°	15" HDPE	17.6"	20"	Hole 20	-1.3"	P1
Invert 2	484.25'	90°	8" PVC SDR35	8.5"	10"	Hole 10	-0.25"	P1
Invert 3	484.25'	251°	15" HDPE	17.6"	20"	Hole 20	-1.3"	P1
Invert 4								
Invert 5								
Invert 6								
Invert 7								
Invert 8								

Cast (Int. Dim.) - Interior Dimensions



Submittal Drawing
 2/13/2026 11:53:41 AM

SUBMITTAL
 APPROVED BY: