

Job Name: 25-4299 - Seneca High School
 Job Location: Louisville, KY
 Contractor: Dan Cristiani Excavating Co. Inc.

Plant: 100

Tech: J. Horsley

2/13/2026 1:02:51 PM

PC: J. Jarvis



Structure ID: B1

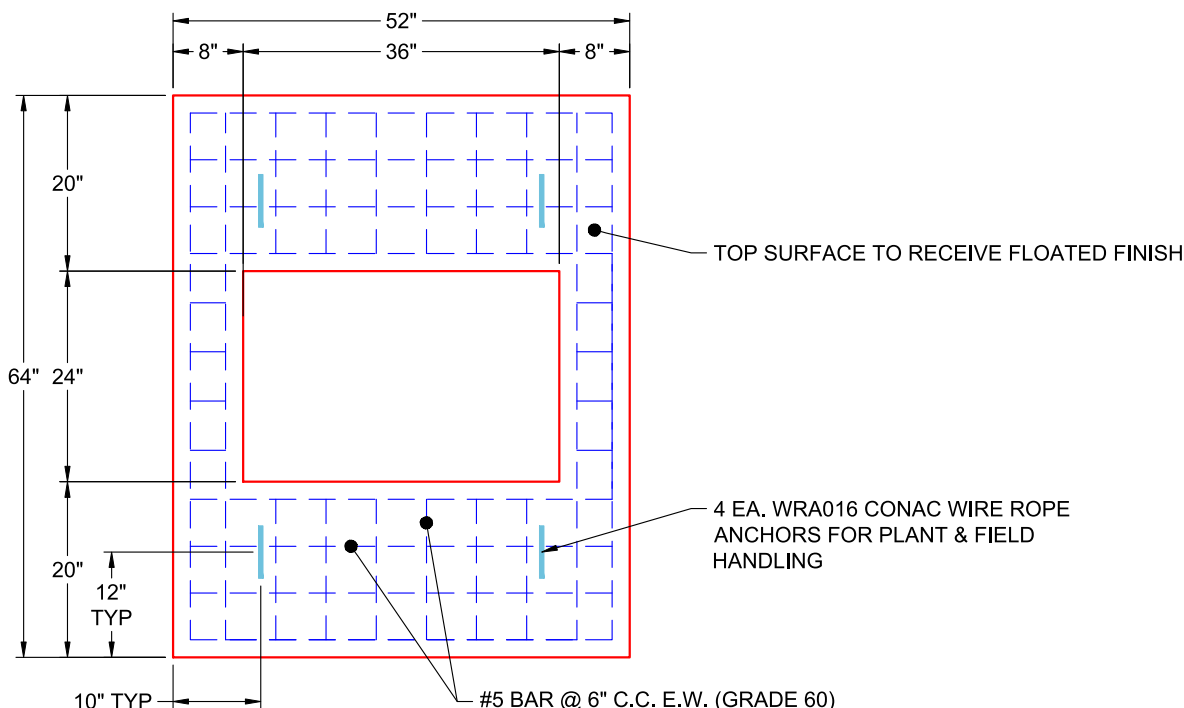
P2 BX036048-08LD08-24X36

CB FLAT TOP 8"W w/24"x36" HOLE F/F

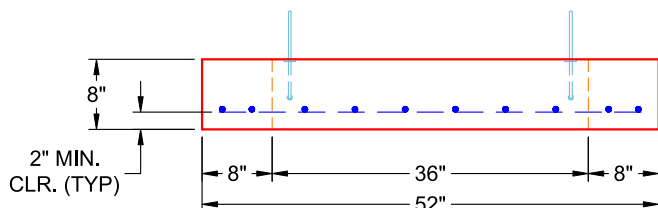
- P3) 24" x 36" - CASTING HEIGHT - 6"
- P2) 36" x 48" - CB FLAT TOP 8"W w/24"x36" HOLE F/F - 8"
- P1) 36" x 48" - BOX BASE 8inW, 8inF, Variable Ht F/n - 53"
- 1) 36" x 48" - Conseal CS-102 1.00"
- 1) Hole - 38
- 1) Hole - 30
- 1) Hole - 16
- 4) MH Step ML-10-TDS-NCR - 10"

0 lb
 1654 lb
 7860 lb
 0 lb
 0 lb
 0 lb
 0 lb
 0 lb
 Structure Total: 9514 lb

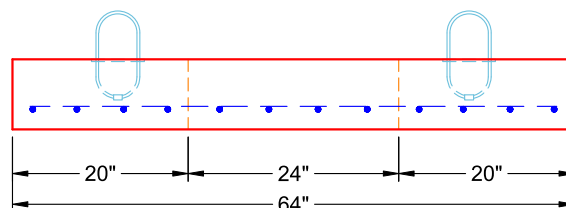
- Structure Notes:**
1. PER LOUISVILLE MSD / ASTM C-913 SPECIFICATIONS
 2. CONCRETE: 4,000 PSI AT 28 DAYS
 3. REINFORCEMENT: #5 BAR @ 6" C.C. E.W. (GRADE 60) - 2" MIN. REBAR CLEARANCE (TYP)
 4. HOE 470 FRAME, GRATE, & CURB HOOD SUPPLIED BY OTHERS
 5. LIFTERS: 4 EA. WRA016 CONAC WIRE ROPE ANCHORS FOR PLANT & FIELD HANDLING
 6. TOP SURFACE TO RECEIVE FLOATED FINISH



**PLAN VIEW
(RIGHT SIDE UP)**



**FRONT VIEW
(RIGHT SIDE UP)**



**SIDE VIEW
(RIGHT SIDE UP)**

Coating (Int):
 Coating (Ext):

Seam Up: Flat
 Seam Dn: Flat

Wall Thickness: 8"

Height (Ext): 8"

Weight (Net): 1654 lb
 Volume (Net): 0.42cu.yd