

Job Name: 25-4299 - Seneca High School
 Job Location: Louisville, KY
 Contractor: Dan Cristiani Excavating Co. Inc.

Plant: 100
 2/10/2026 8:25:04 AM

Tech: J. Horsley
 PC: J. Jarvis



Structure ID: A9

P2 MH072LD08S

MH FLAT TOP SPEC. HT. (8") w/24"x36" Hole F/F

- P3) 24" x 36" - CASTING HEIGHT - 6"
- P2) 72" - MH FLAT TOP SPEC. HT. (8") w/24"x36" Hole F/F - 8"
- P1) 72" - MH BASE Custom Ht F/n - 50"
- 1) 72" - Conseal CS-102 1.00"
- 2) Hole - 46
- 1) Hole - 24
- 4) MH Step ML-10-TDS-NCR - 10"

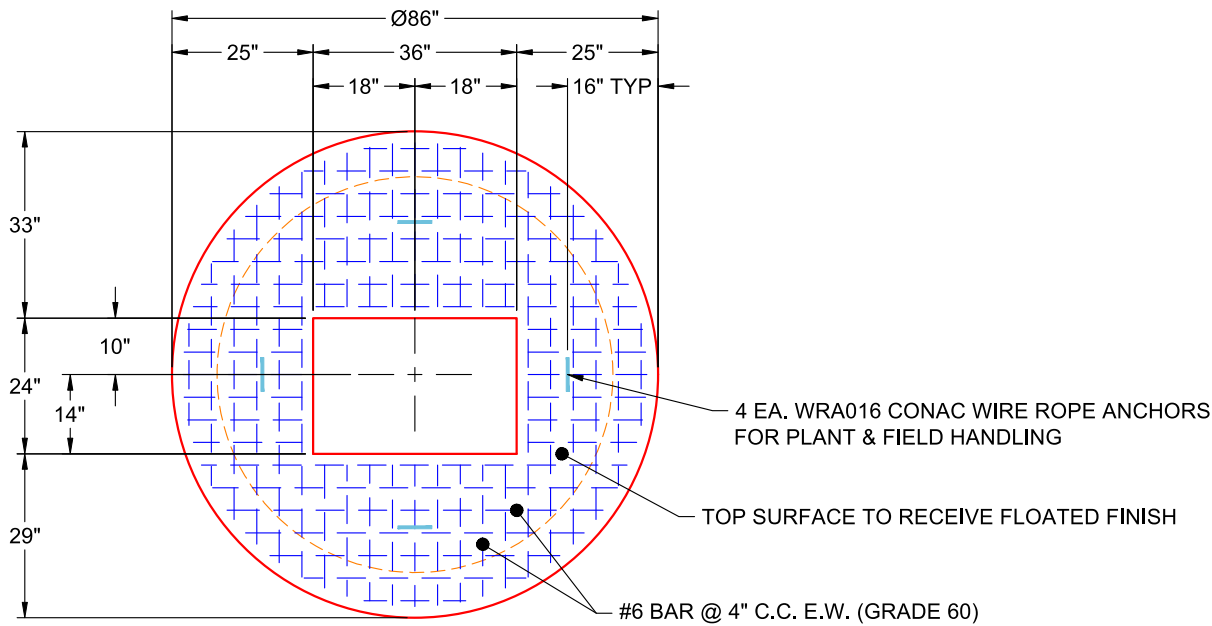
0 lb
 3319 lb
 8829 lb
 0 lb
 0 lb
 0 lb
 0 lb

 12149 lb

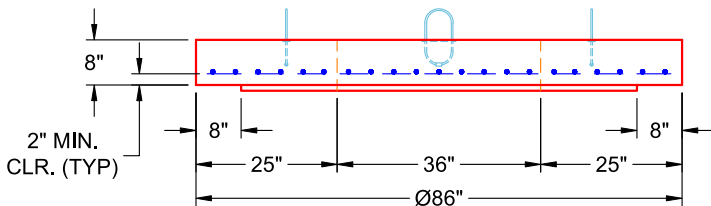
Structure Total:

Structure Notes:

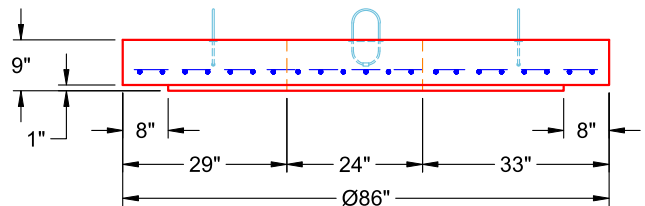
1. PER LOUISVILLE MSD / ASTM C-478 SPECIFICATIONS
2. CONCRETE: 4,000 PSI AT 28 DAYS
3. REINFORCEMENT: #6 BAR @ 4" C.C. E.W. (GRADE 60) - 2" MIN. REBAR CLEARANCE (TYP)
4. HOE 470 FRAME, GRATE, & CURB HOOD SUPPLIED BY OTHERS
5. LIFTERS: 4 EA. WRA016 CONAC WIRE ROPE ANCHORS FOR PLANT & FIELD HANDLING
6. TOP SURFACE TO RECEIVE FLOATED FINISH



**PLAN VIEW
(RIGHT SIDE UP)**



**FRONT VIEW
(RIGHT SIDE UP)**



**SIDE VIEW
(RIGHT SIDE UP)**

Coating (Int):
 Coating (Ext):

Seam Up: Flat
 Seam Dn: Flat

Wall Thickness: 7"

Height (Ext): 8"

Weight (Net): 3319 lb
 Volume (Net): 0.85cu.yd