

Job Name: 25-4299 - Seneca High School
 Job Location: Louisville, KY
 Contractor: Dan Cristiani Excavating Co. Inc.

Plant: 100
 2/10/2026 8:25:03 AM

Tech: J. Horsley
 PC: J. Jarvis



Structure ID: A7

P2 BX036060-08LD06-S

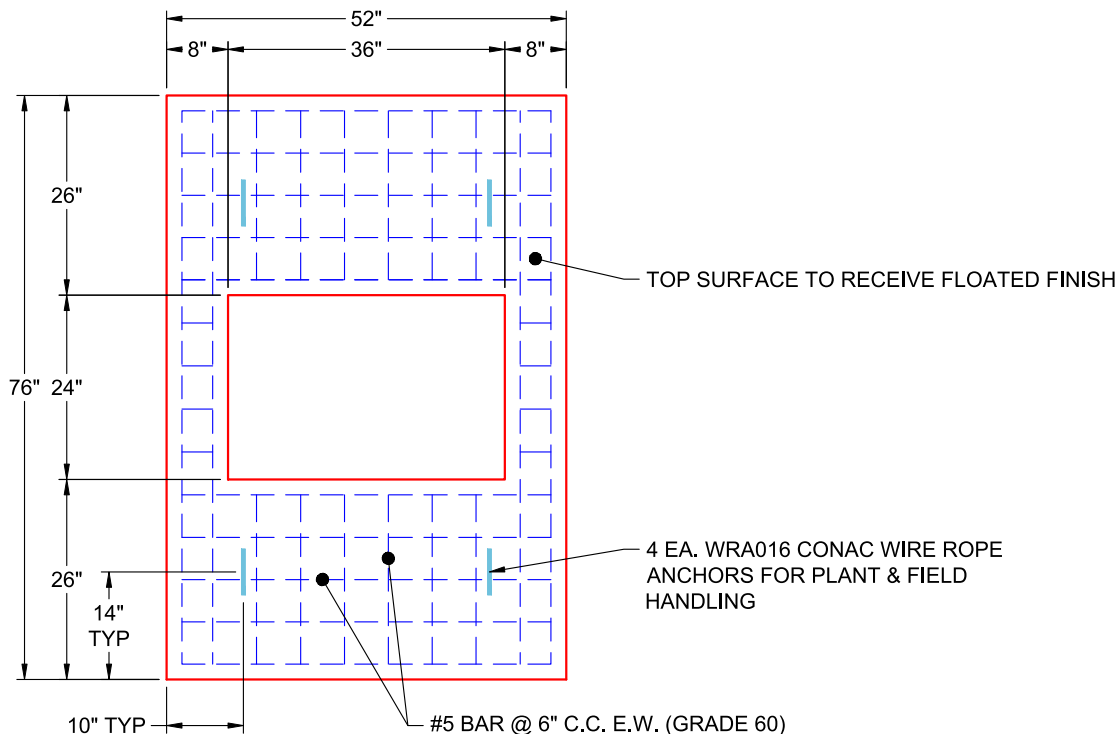
CB FLAT TOP 8"W w/24"x36" HOLE F/F

- P3) 24" x 36" - CASTING HEIGHT - 6"
- P2) 36" x 60" - CB FLAT TOP 8"W w/24"x36" HOLE F/F - 6"
- P1) 36" x 60" - BOX BASE 8inW, 10inF, Variable Ht F/n - 55"
- 1) SECONDARY POUR
- 1) 36" x 60" - Conseal CS-102 1.00"
- 1) 24" x 36" - Conseal CS-102 1.00"
- 1) Hole - 54
- 1) Hole - 20
- 1) Hole - 48
- 6) MH Step ML-10-TDS-NCR - 10"

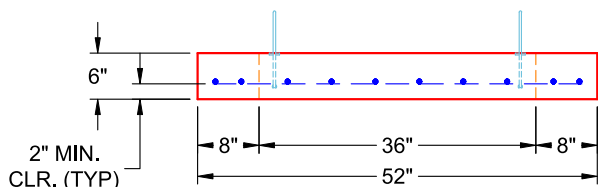
0 lb
 1555 lb
 8624 lb
 0 lb
 0 lb
 0 lb
 0 lb
 0 lb
 0 lb
 0 lb
 0 lb

 Structure Total: 10178 lb

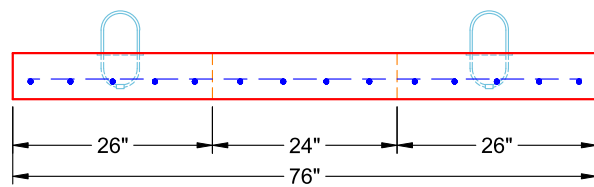
- Structure Notes:
1. PER LOUISVILLE MSD / ASTM C-913 SPECIFICATIONS
 2. CONCRETE: 4,000 PSI AT 28 DAYS
 3. REINFORCEMENT: #5 BAR @ 6" C.C. E.W. (GRADE 60) - 2" MIN. REBAR CLEARANCE (TYP)
 4. HOE 470 FRAME, GRATE, & CURB HOOD SUPPLIED BY OTHERS
 5. LIFTERS: 4 EA. WRA016 CONAC WIRE ROPE ANCHORS FOR PLANT & FIELD HANDLING
 6. TOP SURFACE TO RECEIVE FLOATED FINISH



**PLAN VIEW
(RIGHT SIDE UP)**



**FRONT VIEW
(RIGHT SIDE UP)**



**SIDE VIEW
(RIGHT SIDE UP)**

Coating (Int):
 Coating (Ext):

Seam Up: Flat
 Seam Dn: Flat

Wall Thickness: 8"

Height (Ext): 6"

Weight (Net): 1555 lb
 Volume (Net): 0.4cu.yd