

Job Name: 25-4299 - Seneca High School
 Job Location: Louisville, KY
 Contractor: Dan Cristiani Excavating Co. Inc.

Plant: 100
 1/21/2026 1:38:24 PM

Tech: J. Horsley
 PC: J. Jarvis



Structure ID: A6

P2 BX060084-08LD08SP

CB FLAT TOP 8"W w/24"x36" HOLE F/F

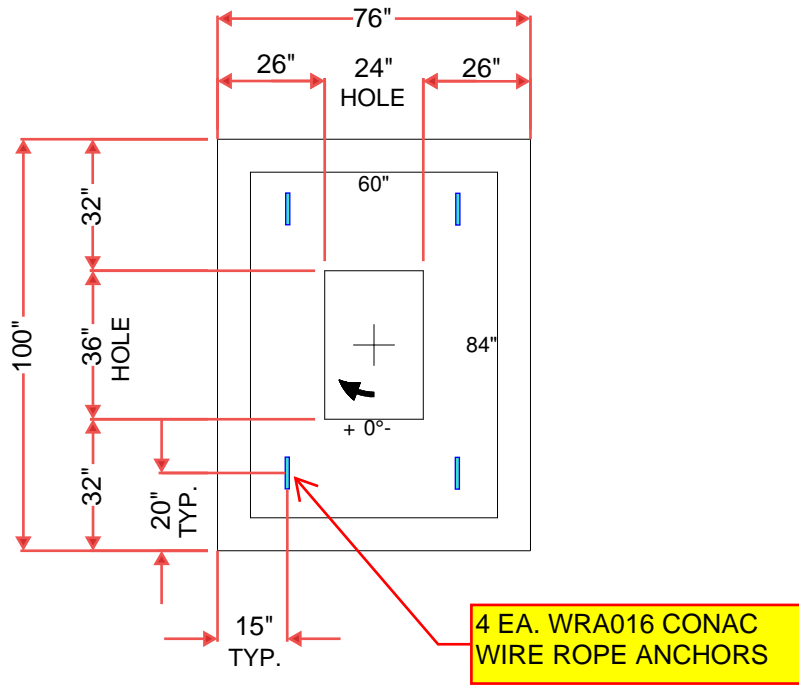
- P3) 24" x 36" - CASTING HEIGHT - 6"
- P2) 60" x 84" - CB FLAT TOP 8"W w/24"x36" HOLE F/F - 8"
- P1) 60" x 84" - BOX BASE 8inW, 8inF, Variable Ht F/n - 55"
- 1) Hole - 74 x 52
- 1) Hole - 38
- 1) Hole - 50
- 5) MH Step ML-10-TDS-NCR - 10"

0 lb
 4522 lb
 12576 lb
 0 lb
 0 lb
 0 lb
 0 lb

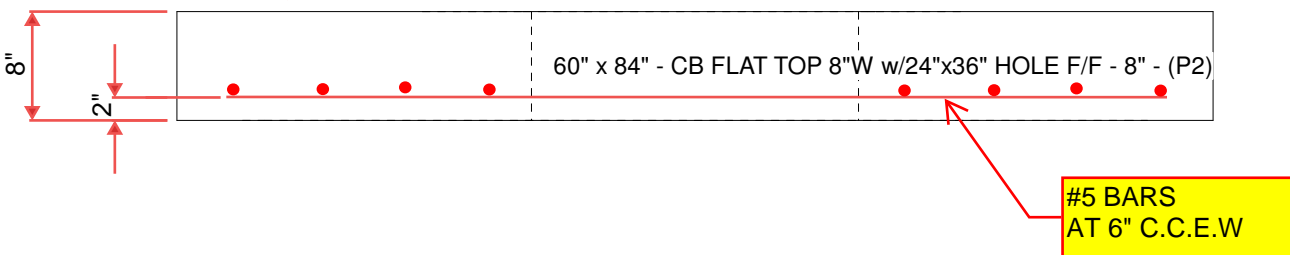
 Structure Total: 17098 lb

Structure Notes:
 1. PER LOUISVILLE MSD / ASTM C478 SPECIFICATIONS.
 2. CONCRETE = 4,000 PSI AT 28 DAYS.
 3. NO INVERT CHANNEL.
 4. CASTING BY OTHERS (HOE 470 F/G/H).

 REINFORCING PER ASTM A615 (GRADE 60).
 - TOP SLAB = H20 LOADING.
 - WALLS (As .37) #5 BARS AT 10" C.C.E.W.
 - FLOOR (As .37) #5 BARS AT 10" C.C.E.W.



FLOAT FINISH ON TOP SURFACE



#5 BARS AT 6" C.C.E.W

Coating (Int): Coating (Ext):	Seam Up: Flat Seam Dn: Flat	Wall Thickness: 8"	Height (Ext): 8"	Weight (Net): 4522 lb Volume (Net): 1.16cu.yd
----------------------------------	--------------------------------	--------------------	------------------	--