

Job Name: 25-4299 - Seneca High School
 Job Location: Louisville, KY
 Contractor: Dan Cristiani Excavating Co. Inc.

Plant: 100

2/4/2026 2:23:54 PM

Tech: J. Horsley

PC: J. Jarvis



Structure ID: A5

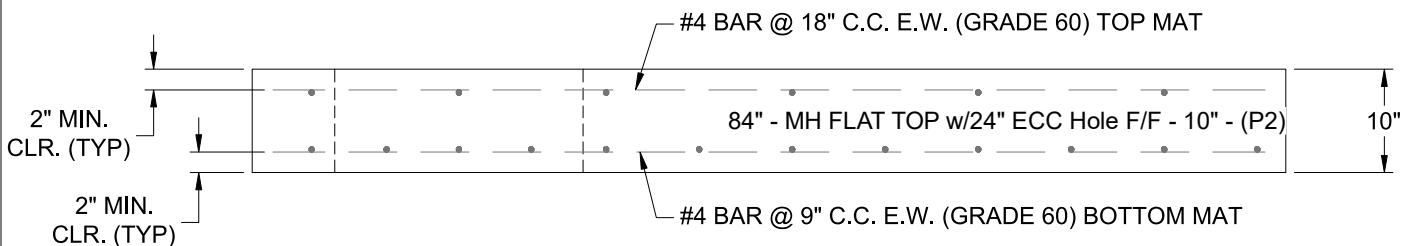
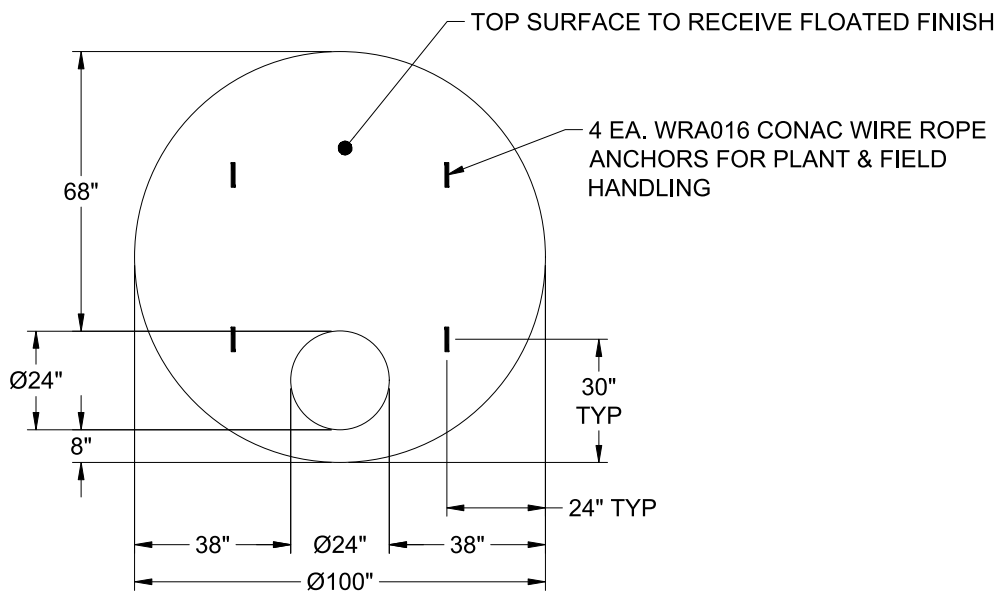
P2 MH084LD10-24ECC

MH FLAT TOP w/24" ECC Hole F/F

- P3) 24" - CASTING HEIGHT - 7"
- P2) 84" - MH FLAT TOP w/24" ECC Hole F/F - 10"
- P1) 84" - MH BASE Custom Ht F/n - 64"
- 1) SECONDARY POUR - WEIR WALL
- 1) 84" - Conseal CS-102 1.00"
- 2) Hole - 74 x 52
- 2) Hole - 24
- 5) MH Step ML-10-TDS-NCR - 10"

	0 lb
	6211 lb
	12246 lb
	985 lb
	0 lb
	0 lb
	0 lb
	0 lb
Structure Total:	19442 lb

- Structure Notes:**
1. PER ASTM C-478 SPECIFICATIONS
 2. CONCRETE: 4,000 PSI AT 28 DAYS
 3. REINFORCEMENT - 2" MIN. REBAR CLEARANCE (TYP):
 - TOP MAT: #4 BAR @ 18" C.C. E.W. (GRADE 60)
 - BOTTOM MAT: #4 BAR @ 9" C.C. E.W. (GRADE 60)
 4. HOE MC-420 FRAME & COVER "STORM LOU-MSD" SUPPLIED BY OTHERS
 5. LIFTERS: 4 EA. WRA016 CONAC WIRE ROPE ANCHORS FOR PLANT & FIELD HANDLING
 6. TOP SURFACE TO RECEIVE FLOATED FINISH



Coating (Int):
 Coating (Ext):

Seam Up: Flat
 Seam Dn: Flat

Wall Thickness: 8"

Height (Ext): 10"

Weight (Net): 6211 lb
 Volume (Net): 1.59cu.yd