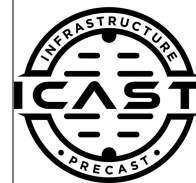


Job Name: 25-4299 - Seneca High School
 Job Location: Louisville, KY
 Contractor: Dan Cristiani Excavating Co. Inc.

Plant: 100
 2/4/2026 11:41:30 AM

Tech: J. Horsley
 PC: J. Jarvis



Structure ID: A5

P1 MH084BAVF

MH BASE Custom Ht F/n

- P3) 24" - CASTING HEIGHT - 7"
- P2) 84" - MH FLAT TOP w/24" ECC Hole F/F - 10"
- P1) 84" - MH BASE Custom Ht F/n - 64"
- 1) SECONDARY POUR - WEIR WALL
- 1) 84" - Conseal CS-102 1.00"
- 2) Hole - 74 x 52
- 2) Hole - 24
- 5) MH Step ML-10-TDS-NCR - 10"

0 lb
 6211 lb
 12246 lb
 985 lb
 0 lb
 0 lb
 0 lb
 0 lb

 0 lb
 Structure Total: 19442 lb

- Structure Notes:**
1. PER ASTM C-478 SPECIFICATIONS
 2. CONCRETE: 4,000 PSI AT 28 DAYS
 3. REINFORCEMENT: PER ASTM A615
 4. NO STORM INVERT
 5. STEPS AT 69 DEGREES
 6. HOE MC-420 FRAME & COVER "STORM LOU-MSD" SUPPLIED BY OTHERS
 7. THIS STRUCTURE CONTAINS A WEIR WALL - SEE ATTACHED PG. 2 OF 2 FOR DETAILS

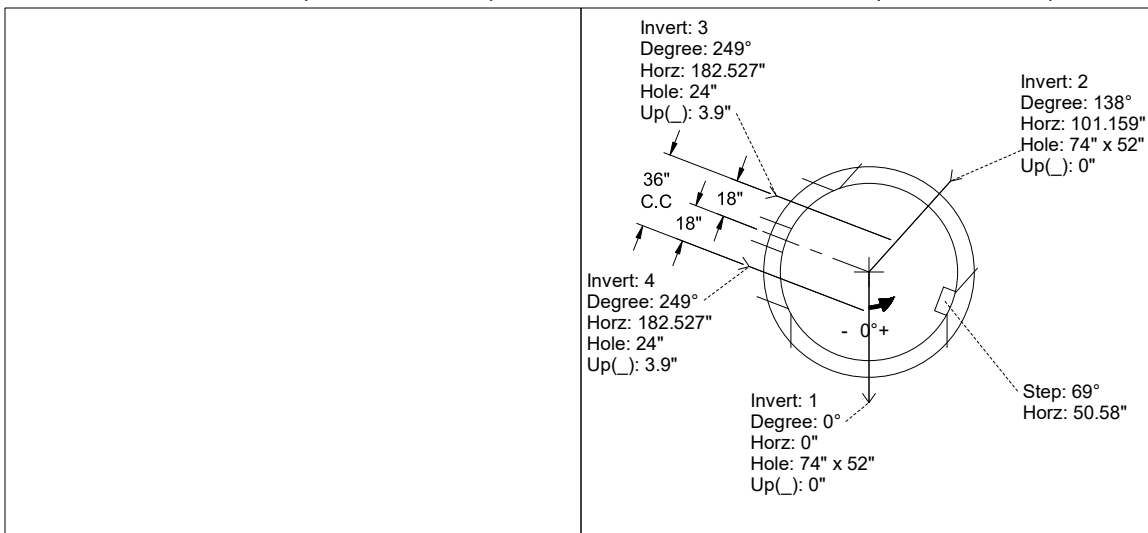
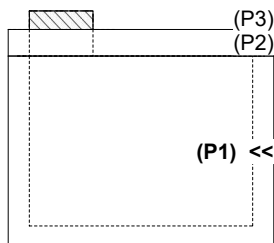
Rim: 484.5' Rim to Invert: 6.3' Slack: 0.1" Sump: 5.5" Step Position: 69°

PG. 1 OF 2

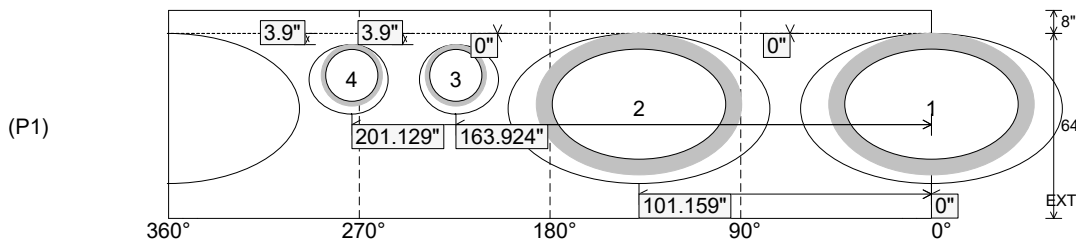
Position	Elev	Angle	Ext. (cw)	Pipe	Pipe OD	Connector	Hole	Horz Size	Up ()	Offset
Invert 1	478.2'	0°	0"	60" x 38" ELL RCP	71" x 49"	Hole 74 x 52	74" x 52"	90.541"	0"	0"
Invert 2	478.2'	138°	120.428"	60" x 38" ELL RCP	71" x 49"	Hole 74 x 52	74" x 52"	90.541"	0"	0"
Invert 3	478.2'	249°	198.88"	18" HDPE	21.2"	Hole 24	24"	27.395"	3.9"	-18"
Invert 4	478.2'	249°	235.707"	18" HDPE	21.2"	Hole 24	24"	27.395"	3.9"	18"
Invert 5										
Invert 6										
Invert 7										
Invert 8										

RIGHT-SIDE UP VIEW (int. dimensions)

UPSIDE-DOWN VIEW (int. dimensions)



INSIDE WALL DIMENSIONS



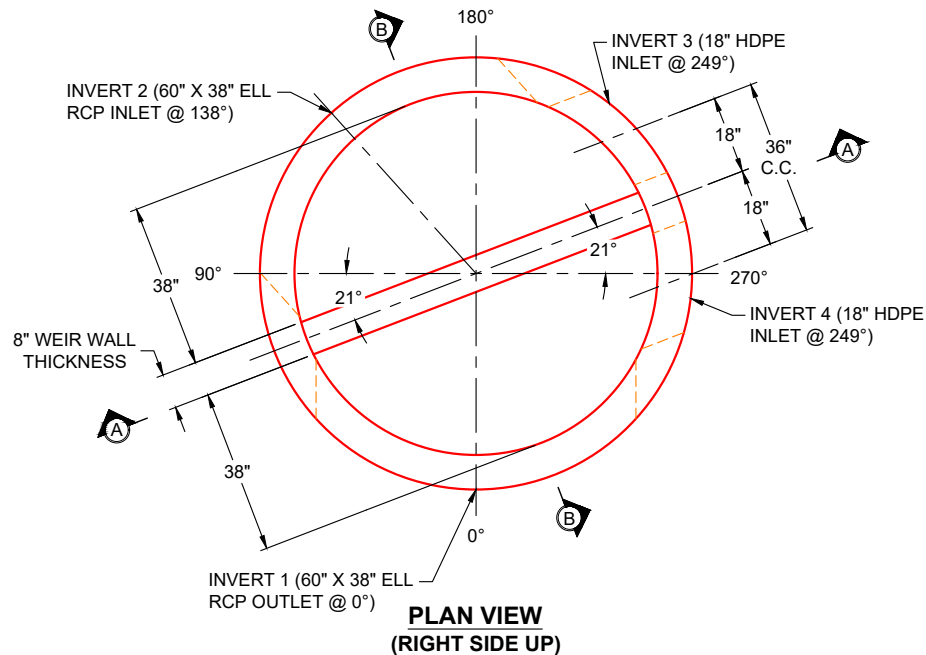
Coating (Int):
 Coating (Ext):

Seam Up: Flat
 Seam Dn: n/a

Wall Thickness: 8"
 Floor Height: 8"

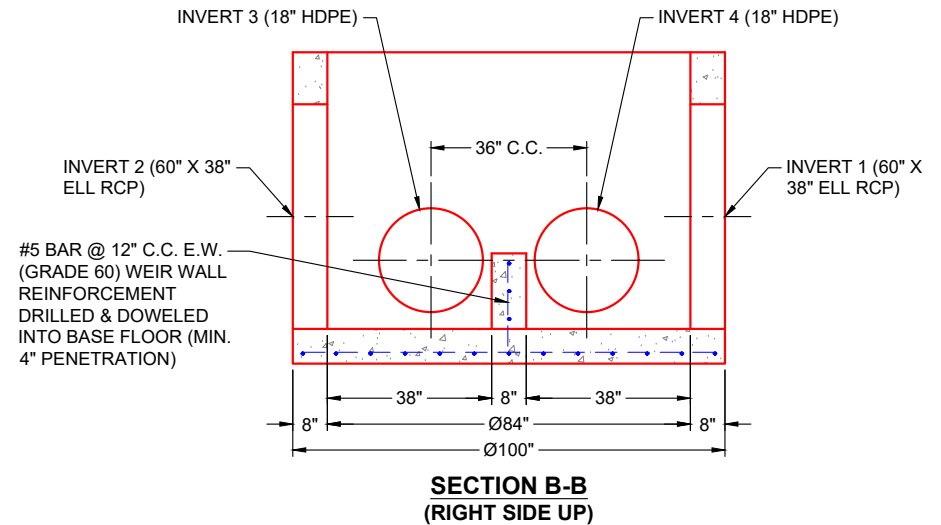
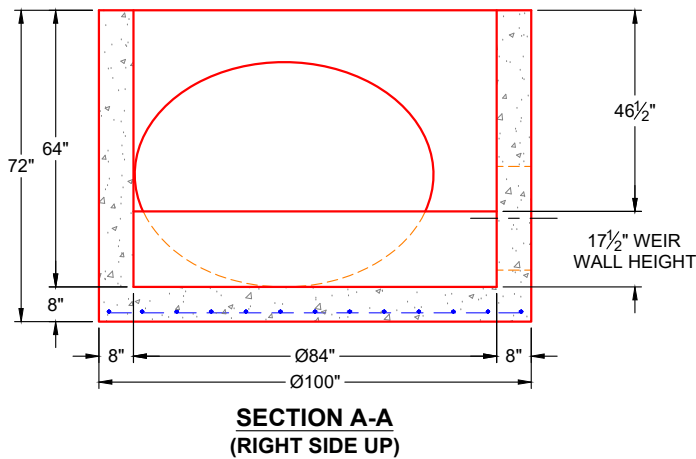
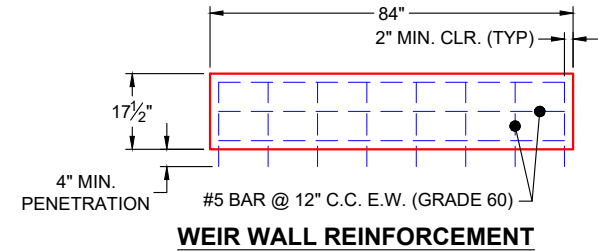
Height (Int): 64"
 Height (Ext): 72"


Weight (Net): 12246 lb
 Volume (Net): 3.13cu.yd



GENERAL NOTES:

1. PER ASTM C-478 (LATEST REVISION)
2. CONCRETE: 4,000 PSI AT 28 DAYS
3. REINFORCEMENT: DRILL & DOWEL #5 BAR @ 12" C.C. E.W. (GRADE 60) INTO BASE FLOOR FOR WEIR WALL POUR TIE-IN - 2" MIN. REBAR CLEARANCE (TYP) & MIN. 4" PENETRATION INTO BASE FLOOR
4. WEIGHT: 985 LBS (13,231 LBS BASE & WEIR WALL TOTAL)
5. SEE STACK-IT DRAWING FOR STRUCTURE "15" (PG. 1 OF 2) FOR ADDITIONAL DETAILS



PRODUCTION WORK ORDER		PRODUCT I.D.: MH084BAVF	DESCRIPTION: Ø84" X 17.5" X 8" WEIR WALL	
	QUALITY CONTROL CHECKLIST <input type="checkbox"/> ALL DIMENSIONS CORRECT. <input type="checkbox"/> LIFTERS INSTALLED. <input type="checkbox"/> HOLE LOCATION(S) CORRECT. <input type="checkbox"/> REINFORCING & SPACING CORRECT. <input type="checkbox"/> SURFACE QUALITY ACCEPTABLE. <input type="checkbox"/> EDGES CHAMFERED. <input type="checkbox"/> ALL PATCHWORK ACCEPTABLE.	PRODUCT VIEW: RIGHT SIDE UP	CUSTOMER: DAN CRISTIANI EXCAVATING CO. INC.	
		PLANT: BEAVER DAM, KY	PROJECT: SENECA HIGH SCHOOL	
		WEIGHT: 985 LBS (13,231 LBS BASE & WEIR TOTAL)	STRUCTURE: A5	
		TOP SECTION JOINT: N / A	ORDER NO: 25-4299	
		BASE SECTION JOINT: FLAT	PE: J.H. ROSS	DRAWING: K. CARDWELL
		QC CHECK INITIALS:	DATE: 02/04/26	SCALE: NTS