

Job Name: 25-4299 - Seneca High School
Job Location: Louisville, KY
Contractor: Dan Cristiani Excavating Co. Inc.

PC: J. Jarvis
 TECH: J. Horsley
 Plant: 100



Structure ID: **A30**
 Spec: MSD
 Type: Yard Drain
 Size: 18" x 18"

Rim: 486.9'
 Invert: 485'
 Rim to Invert: 1.9'

Sump: 0"
 Floor (Top): 485'
 Floor Height: 6"

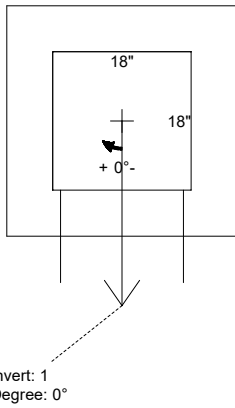
Floor (Bot): 484.5'
 Overall Height: 2.333'
 Slack: 0.8"

- Structure Notes:**
1. PER LOUISVILLE MSD / ASTM C-913 SPECIFICATIONS
 2. CONCRETE: 4,000 PSI AT 28 DAYS
 3. REINFORCEMENT: #5 BAR @ 12" C.C. E.W. (GRADE 60)
 4. NO STORM INVERT
 5. NO STEPS
 6. HOE 165-A FRAME & GRATE SUPPLIED BY OTHERS

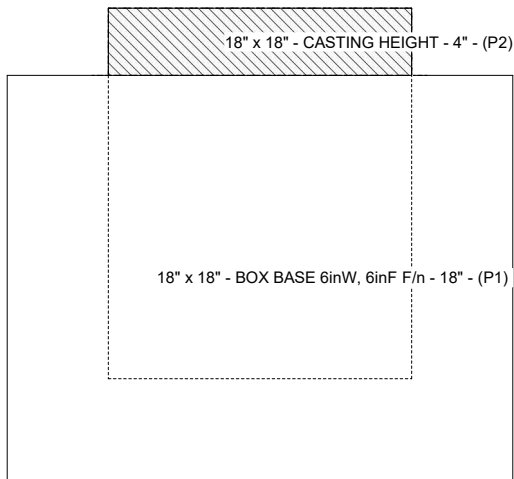
STRUCTURE SUMMARY:

P2) 18" x 18" - CASTING HEIGHT - 4" 0 lb
 P1) 18" x 18" - BOX BASE 6inW, 6inF F/n - 18" 1222 lb
 1) 18" x 18" - Conseal CS-102 1.00" 0 lb
 1) Hole - 16 0 lb

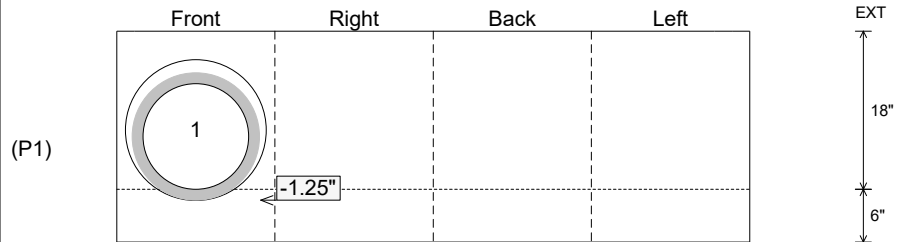
Structure Total: 1222 lb



| Position | Elev | Angle | Pipe | Pipe OD | Hole | Connector | Up (L) | Ref |
|----------|--------|-------|----------|---------|------|-----------|--------|-----|
| Rim | 486.9' | | | | | | | |
| Reducer | | | | | | | | |
| Invert 1 | 485' | 0° | 12" HDPE | 14.5" | 16" | Hole 16 | -1.25" | P1 |
| Invert 2 | | | | | | | | |
| Invert 3 | | | | | | | | |
| Invert 4 | | | | | | | | |
| Invert 5 | | | | | | | | |
| Invert 6 | | | | | | | | |
| Invert 7 | | | | | | | | |
| Invert 8 | | | | | | | | |



Cast (Int. Dim.) - Interior Dimensions



Submittal Drawing
 2/13/2026 10:00:15 AM

SUBMITTAL
 APPROVED BY: