

**Job Name: 25-4299 - Seneca High School**  
**Job Location: Louisville, KY**  
**Contractor: Dan Cristiani Excavating Co. Inc.**

PC: J. Jarvis  
 TECH: J. Horsley  
 Plant: 100



Structure ID: **A16**  
 Spec: MSD  
 Type: CB SINGLE  
 Size: 24" x 24"

Rim: 486.6'  
 Invert: 483.75'  
 Rim to Invert: 2.85'

Sump: 0"  
 Floor (Top): 483.75'  
 Floor Height: 8"

Floor (Bot): 483.083'  
 Overall Height: 3.5'  
 Slack: 0.2"

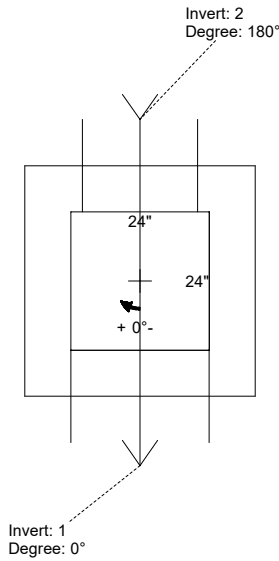
- Structure Notes:**
1. PER LOUISVILLE MSD / ASTM C-913 SPECIFICATIONS
  2. CONCRETE: 4,000 PSI AT 28 DAYS
  3. REINFORCEMENT: #5 BAR @ 12" C.C. E.W. (GRADE 60)
  4. NO STORM INVERT
  5. NO STEPS
  6. HOE 280T FRAME & GRATE SUPPLIED BY OTHERS

**STRUCTURE SUMMARY:**

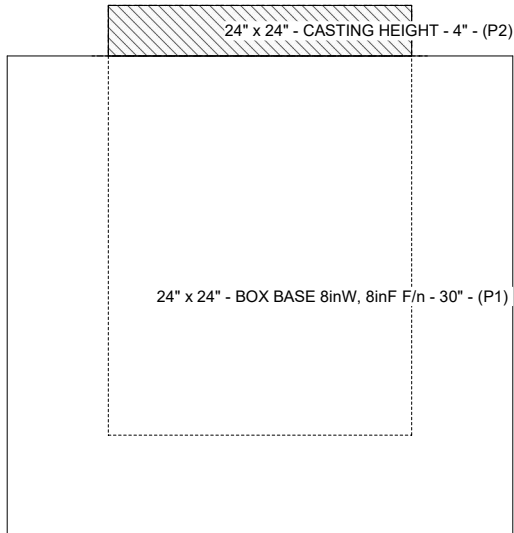
P2) 24" x 24" - CASTING HEIGHT - 4"  
 P1) 24" x 24" - BOX BASE 8inW, 8inF F/n - 30"

1) 24" x 24" - Conseal CS-102 1.00"  
 1) Hole - 24  
 1) Hole - 20

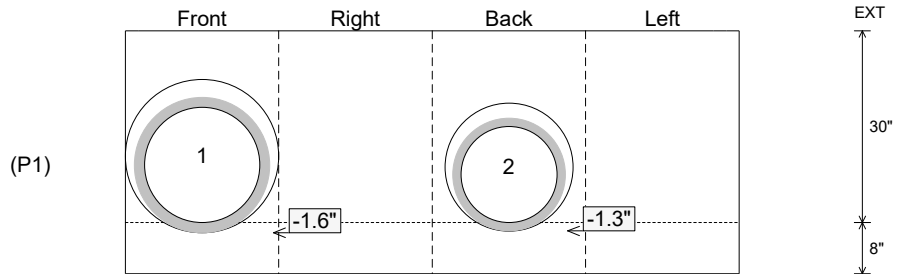
0 lb  
 3213 lb  
 0 lb  
 0 lb  
 0 lb  
 -----  
 Structure Total: 3213 lb



Position	Elev	Angle	Pipe	Pipe OD	Hole	Connector	Up (")	Ref
Rim	486.6'							
Reducer								
Invert 1	483.75'	0°	18" HDPE	21.2"	24"	Hole 24	-1.6"	P1
Invert 2	483.75'	180°	15" HDPE	17.6"	20"	Hole 20	-1.3"	P1
Invert 3								
Invert 4								
Invert 5								
Invert 6								
Invert 7								
Invert 8								



**Cast (Int. Dim.) - Interior Dimensions**



Submittal Drawing  
 2/9/2026 3:45:35 PM

SUBMITTAL  
 APPROVED BY: