

Job Name: 25-4299 - Seneca High School
 Job Location: Louisville, KY
 Contractor: Dan Cristiani Excavating Co. Inc.

Plant: 100
 2/10/2026 8:24:03 AM

Tech: J. Horsley
 PC: J. Jarvis



Structure ID: A11

P1 MH060BA60

MH BASE T/n

P4) 24" - CASTING HEIGHT - 7"	0 lb
P3) 24" - GRADE RING F/F - 3"	202 lb
P2) 60" - MH FLAT TOP w/ 24" ECC Hole F/G - 13"	2869 lb
P1) 60" - MH BASE T/n - 60"	7256 lb
1) 60" - Conseal CS-102 1.00"	0 lb
1) Hole - 46	0 lb
1) Hole - 10	0 lb
1) Hole - 20	0 lb
1) Hole - 38	0 lb
5) MH Step ML-10-TDS-NCR - 10"	0 lb
Structure Total:	10327 lb

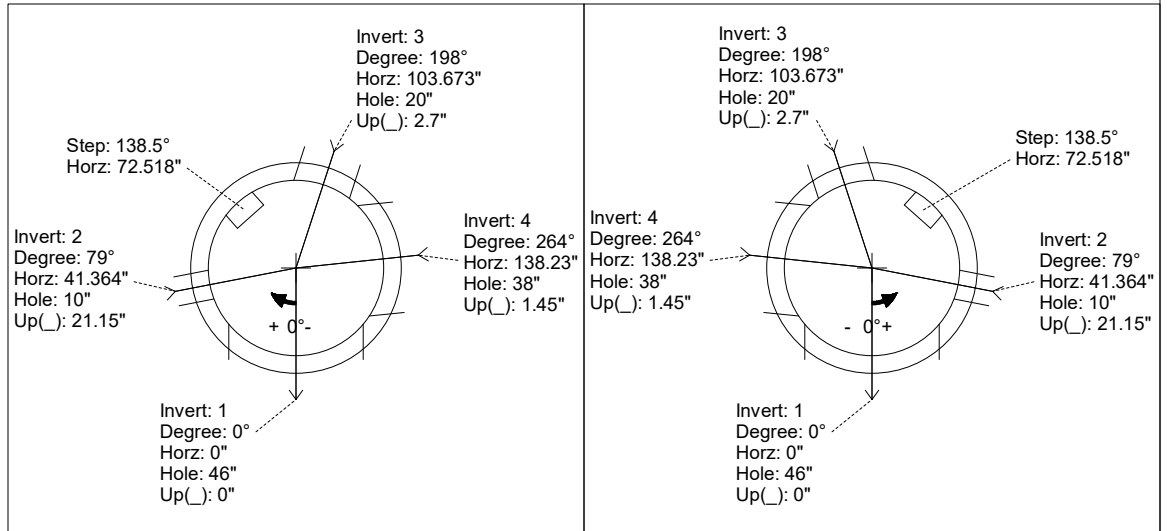
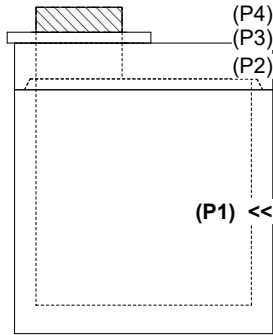
Structure Notes:
 1. PER LOUISVILLE MSD / ASTM C-478 SPECIFICATIONS
 2. CONCRETE: 4,000 PSI AT 28 DAYS
 3. REINFORCEMENT: PER ASTM A615
 4. NO STORM INVERT
 5. STEPS AT 138.5 DEGREES
 6. HOE MC-420 FRAME & COVER "STORM LOU-MSD" SUPPLIED BY OTHERS

Rim: 487.7' Rim to Invert: 6.65' Slack: 0.8" Sump: 4" Step Position: 138.5°

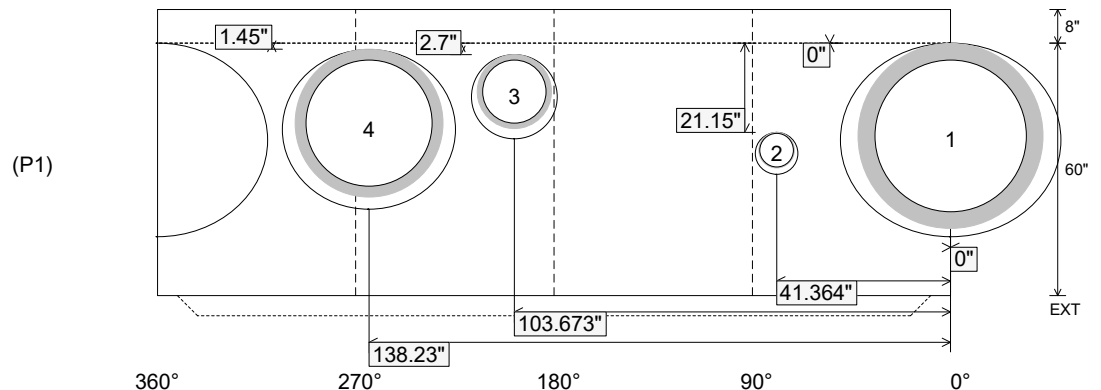
Position	Elev	Angle	Ext. (cw)	Pipe	Pipe OD	Connector	Hole	Horz Size	Up ()	Offset
Invert 1	481.05'	0°	0"	36" RCP B WALL	44"	Hole 46	46"	52.418"	0"	0"
Invert 2	482.5'	79°	49.637"	8" PVC SDR35	8.5"	Hole 10	10"	10.047"	21.15"	0"
Invert 3	481.05'	198°	124.407"	15" HDPE	17.6"	Hole 20	20"	20.39"	2.7"	0"
Invert 4	481.05'	264°	165.876"	30" HDPE	35.1"	Hole 38	38"	41.151"	1.45"	0"
Invert 5										
Invert 6										
Invert 7										
Invert 8										

RIGHT-SIDE UP VIEW (int. dimensions)

UPSIDE-DOWN VIEW (int. dimensions)



INSIDE WALL DIMENSIONS



Coating (Int): Coating (Ext):	Seam Up: Tongue Seam Dn: n/a	Wall Thickness: 6" Floor Height: 8"	Height (Int): 60" Height (Ext): 68"	Weight (Net): 7256 lb Volume (Net): 1.85cu.yd
----------------------------------	---------------------------------	--	--	--