

Job Name: 25-4299 - Seneca High School  
 Job Location: Louisville, KY  
 Contractor: Dan Cristiani Excavating Co. Inc.

Plant: 100

2/10/2026 8:25:05 AM

Tech: J. Horsley

PC: J. Jarvis



**Structure ID: A10**

**P2 BX036060-08LD06-S**

**CB FLAT TOP 8"W w/24"x36" HOLE F/F**

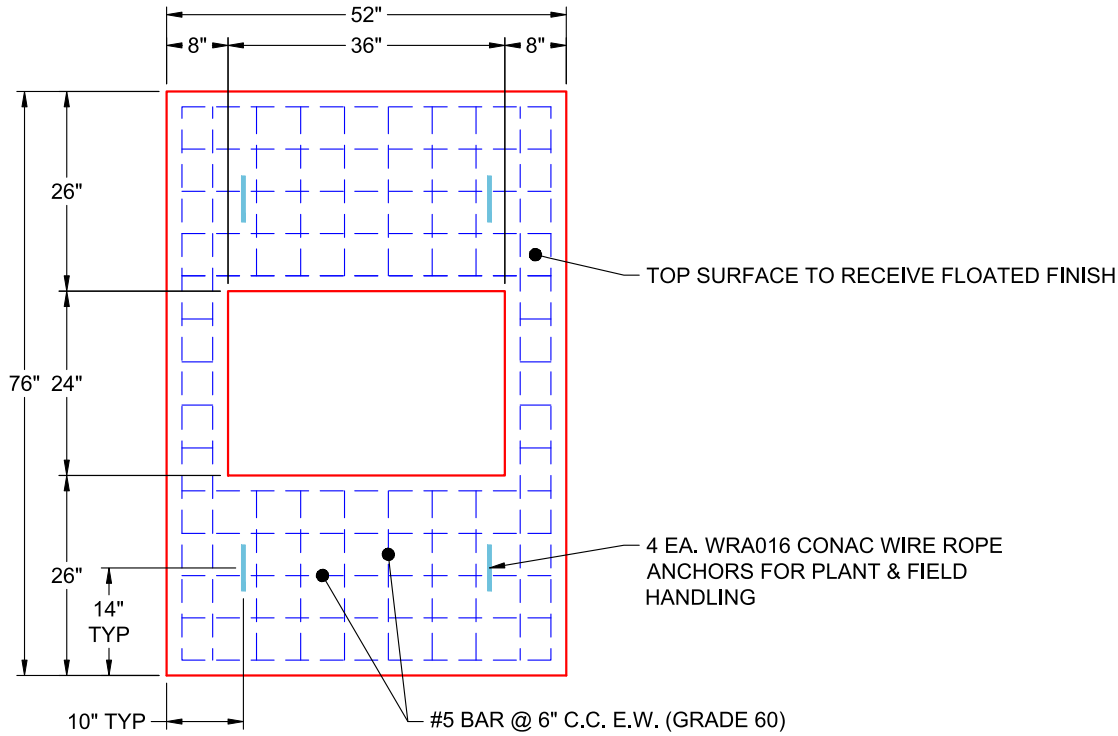
- P3) 24" x 36" - CASTING HEIGHT - 6"
- P2) 36" x 60" - CB FLAT TOP 8"W w/24"x36" HOLE F/F - 6"
- P1) 36" x 60" - BOX BASE 8inW, 8inF, Variable Ht F/n - 46"
- 1) SECONDARY POUR
- 1) 36" x 60" - Conseal CS-102 1.00"
- 1) 24" x 36" - Conseal CS-102 1.00"
- 2) Hole - 46
- 1) Hole - 16

0 lb  
 1555 lb  
 7118 lb  
 0 lb  
 0 lb  
 0 lb  
 0 lb  
 0 lb  
 0 lb  
 -----  
 8673 lb

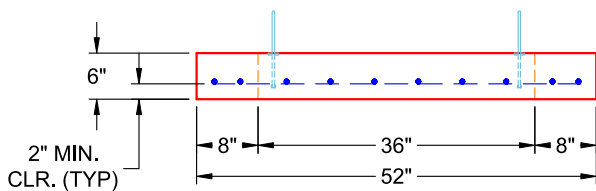
Structure Total:

Structure Notes:

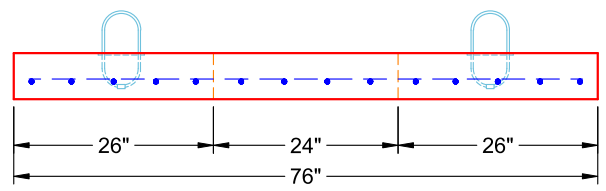
1. PER LOUISVILLE MSD / ASTM C-913 SPECIFICATIONS
2. CONCRETE: 4,000 PSI AT 28 DAYS
3. REINFORCEMENT: #5 BAR @ 6" C.C. E.W. (GRADE 60) - 2" MIN. REBAR CLEARANCE (TYP)
4. HOE 470 FRAME, GRATE, & CURB HOOD SUPPLIED BY OTHERS
5. LIFTERS: 4 EA. WRA016 CONAC WIRE ROPE ANCHORS FOR PLANT & FIELD HANDLING
6. TOP SURFACE TO RECEIVE FLOATED FINISH



**PLAN VIEW  
(RIGHT SIDE UP)**



**FRONT VIEW  
(RIGHT SIDE UP)**



**SIDE VIEW  
(RIGHT SIDE UP)**

Coating (Int):  
 Coating (Ext):

Seam Up: Flat  
 Seam Dn: Flat

Wall Thickness: 8"

Height (Ext): 6"

Weight (Net): 1555 lb  
 Volume (Net): 0.4cu.yd