

Job Name: 25-4299 - Seneca High School
 Job Location: Louisville, KY
 Contractor: Dan Cristiani Excavating Co. Inc.

Plant: 100
 2/10/2026 8:24:03 AM

Tech: J. Horsley
 PC: J. Jarvis



Structure ID: A10

P1 BX3660-08BAVF

BOX BASE 8inW, 8inF, Variable Ht F/n

- P3) 24" x 36" - CASTING HEIGHT - 6"
- P2) 36" x 60" - CB FLAT TOP 8"W w/24"x36" HOLE F/F - 6"
- P1) 36" x 60" - BOX BASE 8inW, 8inF, Variable Ht F/n - 46"
- 1) SECONDARY POUR
- 1) 36" x 60" - Conseal CS-102 1.00"
- 1) 24" x 36" - Conseal CS-102 1.00"
- 2) Hole - 46
- 1) Hole - 16

0 lb
 1555 lb
 7118 lb
 0 lb
 0 lb
 0 lb
 0 lb
 0 lb
 0 lb
 Structure Total: 8673 lb

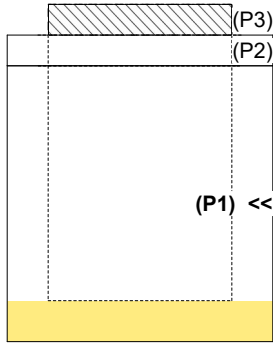
- Structure Notes:**
1. PER LOUISVILLE MSD / ASTM C-913 SPECIFICATIONS
 2. CONCRETE: 4,000 PSI AT 28 DAYS
 3. REINFORCEMENT: #5 BAR @ 12" C.C. E.W. (GRADE 60) - 2" MIN. REBAR CLEARANCE (TYP)
 4. NO STORM INVERT
 5. NO STEPS
 6. HOE 470 FRAME, GRATE, & CURB HOOD SUPPLIED BY OTHERS
 7. WET STICK 18" X 20" #5 L-BARS SPACED @ 12" C.C. (GRADE 60) OUT OF FLOOR FOR WALL POUR TIE-IN (SEE L-BAR DETAIL)

FIRST POUR (FLOOR): 2,653 LBS
SECOND POUR (WALLS): 4,465 LBS

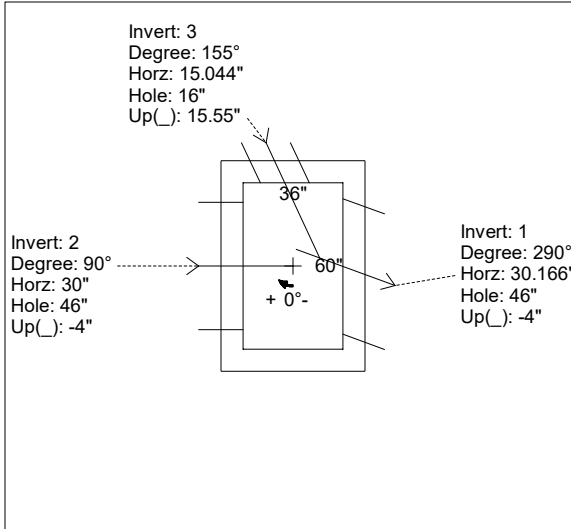
Rim: 485.5' Rim to Invert: 4.85' Slack: 0.2" Sump: 0" Step Position:

Position	Elev	Angle	Ext. (cw)	Pipe	Pipe OD	Connector	Hole	Horz Size	Up ()	Offset
Invert 1	480.65'	290°	41.078"	36" RCP B WALL	44"	Hole 46	46"	48.952"	-4"	-6"
Invert 2	480.65'	90°	38"	36" RCP B WALL	44"	Hole 46	46"	46"	-4"	0"
Invert 3	482.05'	155°	19.314"	12" HDPE	14.5"	Hole 16	16"	17.654"	15.55"	10"
Invert 4										
Invert 5										
Invert 6										
Invert 7										
Invert 8										

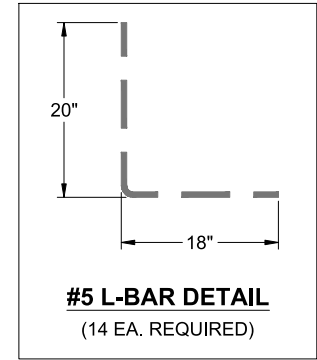
FLOOR: 8"
WALLS: 8"



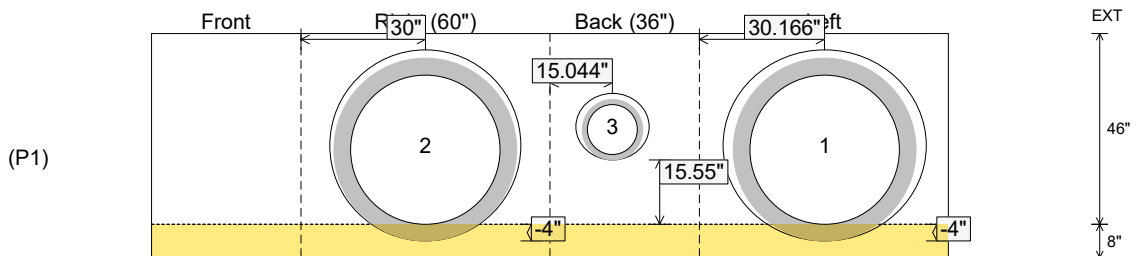
RIGHT-SIDE UP VIEW (int. dimensions)



UPSIDE-DOWN VIEW (int. dimensions)



INSIDE WALL DIMENSIONS



Coating (Int):
 Coating (Ext):

Seam Up: Flat
 Seam Dn: n/a

Wall Thickness: 8"
 Floor Height: 8"

Height (Int): 46"
 Height (Ext): 54"

Weight (Net): 7118 lb
 Volume (Net): 1.82cu.yd

Job Name: 25-4299 - Seneca High School
 Job Location: Louisville, KY
 Contractor: Dan Cristiani Excavating Co. Inc.

Plant: 100
 2/10/2026 8:24:03 AM

Tech: J. Horsley
 PC: J. Jarvis



Structure ID: A10

P1 BX3660-08BAVF

BOX BASE 8inW, 8inF, Variable Ht F/n

- P3) 24" x 36" - CASTING HEIGHT - 6"
- P2) 36" x 60" - CB FLAT TOP 8"W w/24"x36" HOLE F/F - 6"
- P1) 36" x 60" - BOX BASE 8inW, 8inF, Variable Ht F/n - 46"
- 1) SECONDARY POUR
- 1) 36" x 60" - Conseal CS-102 1.00"
- 1) 24" x 36" - Conseal CS-102 1.00"
- 2) Hole - 46
- 1) Hole - 16

0 lb
 1555 lb
 7118 lb
 0 lb
 0 lb
 0 lb
 0 lb
 0 lb
 0 lb
 Structure Total: 8673 lb

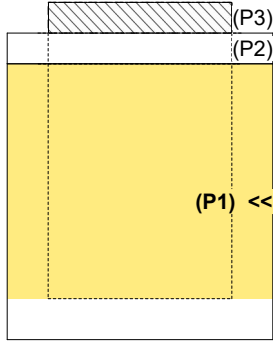
- Structure Notes:
1. PER LOUISVILLE MSD / ASTM C-913 SPECIFICATIONS
 2. CONCRETE: 4,000 PSI AT 28 DAYS
 3. REINFORCEMENT: #5 BAR @ 12" C.C. E.W. (GRADE 60) - 2" MIN. REBAR CLEARANCE (TYP)
 4. NO STORM INVERT
 5. NO STEPS
 6. HOE 470 FRAME, GRATE, & CURB HOOD SUPPLIED BY OTHERS
 7. LIFTERS: 4 EA. 4CA14 CONAC A-ANCHORS FOR PLANT & FIELD HANDLING - INSTALLED IN 0° & 180° WALLS, MIN. 10" FROM TOP OF WALLS

FIRST POUR (FLOOR): 2,653 LBS
SECOND POUR (WALLS): 4,465 LBS

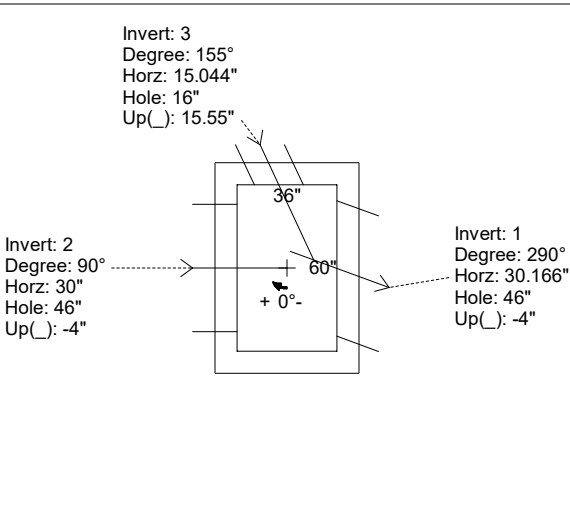
Rim: 485.5' Rim to Invert: 4.85' Slack: 0.2" Sump: 0" Step Position:

Position	Elev	Angle	Ext. (cw)	Pipe	Pipe OD	Connector	Hole	Horz Size	Up ()	Offset
Invert 1	480.65'	290°	41.078"	36" RCP B WALL	44"	Hole 46	46"	48.952"	-4"	-6"
Invert 2	480.65'	90°	38"	36" RCP B WALL	44"	Hole 46	46"	46"	-4"	0"
Invert 3	482.05'	155°	19.314"	12" HDPE	14.5"	Hole 16	16"	17.654"	15.55"	10"
Invert 4										
Invert 5										
Invert 6										
Invert 7										
Invert 8										

FLOOR: 8"
WALLS: 8"

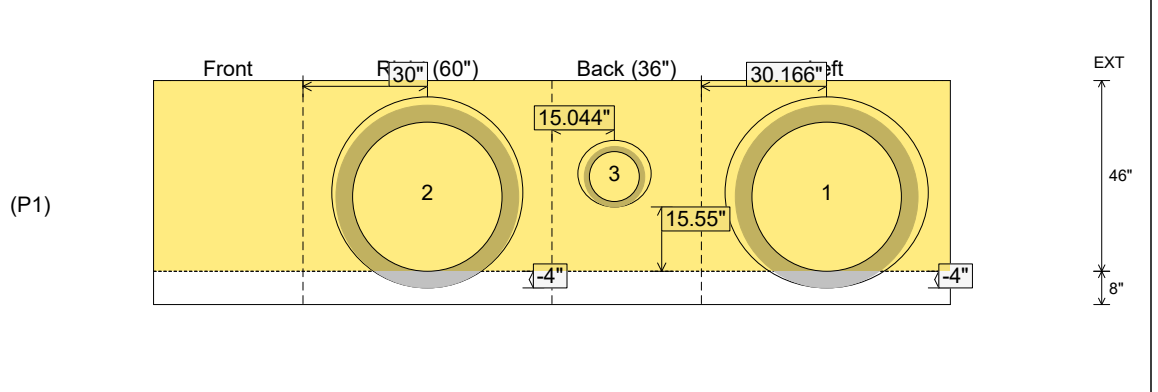


RIGHT-SIDE UP VIEW (int. dimensions)



UPSIDE-DOWN VIEW (int. dimensions)

INSIDE WALL DIMENSIONS



Coating (Int):
 Coating (Ext):

Seam Up: Flat
 Seam Dn: n/a

Wall Thickness: 8"
 Floor Height: 8"

Height (Int): 46"
 Height (Ext): 54"

Weight (Net): 7118 lb
 Volume (Net): 1.82cu.yd