

Job Name: 25-4284 - Bean Cemetery Rd Water Line Extension  
 Job Location: Madisonville, KY  
 Contractor: Luttrell & Sons, LLC

Plant: 100  
 4/24/2026 5:36:13 PM

Tech: Jared - F  
 PC: A. Chambers



**Structure ID: ARV-2**

**P3 MH048LD12ECC**

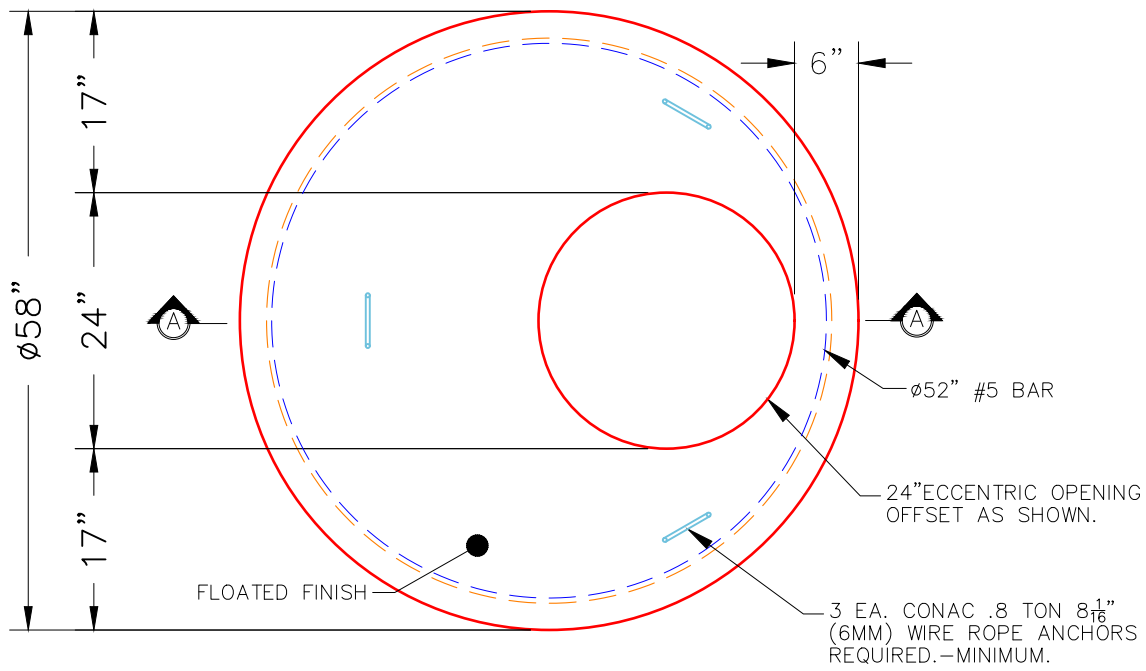
**MH FLAT TOP w/ 24" ECC Hole F/G**

- P4) 24" - CASTING HEIGHT - 7"
- P3) 48" - MH FLAT TOP w/ 24" ECC Hole F/G - 12"
- P2) 48" - MH DH RISER Custom Ht T/F - 57"
- P1) 48" - P.I.P. BY OTHERS - BTM SLAB F/n - 0"
- 1) CASTING - HOE MC-375-SS F/Vented Cover
- 2) 48" - Conseal CS-102 1.00" (Double)
- 2) DOGHOUSE - 14"x20"

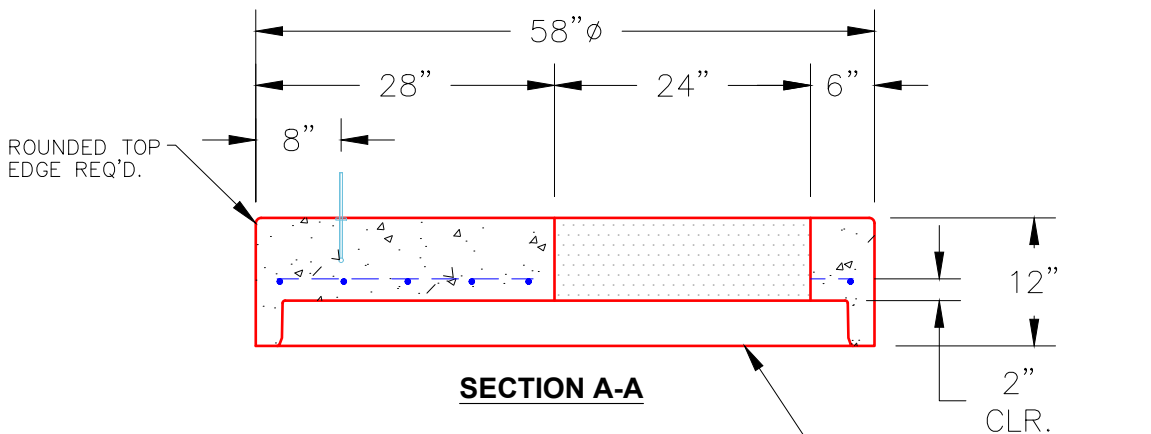
	0 lb
	1561 lb
	3724 lb
	0 lb
	271 lb
	0 lb
	0 lb
Structure Total:	5556 lb

**Structure Notes:**  
 1. PER ASTM C478 SPECIFICATIONS.  
 2. CONCRETE = 4,000 PSI AT 28 DAYS.  
 3. NO STEPS AND NO INVERT CHANNEL.  
 4. CASTING BY ICAST (HOE MC-375 F/VENTED COVER).  
 5. FOOTERS BY OTHERS

REINFORCING PER ASTM A615 (GRADE 60).  
 - TOP SLAB (As .62) #5 BARS AT 6" C.C.E.W.  
 - RISER/WALLS (As .12)



**PLAN VIEW**



**SECTION A-A**

**NOTES:**

- 1. MANUFACTURED TO ASTM C-478 (LATEST REVISION).
- 2. CONCRETE: 4,000 PSI AT 28 DAYS.
- 3. REINFORCING: #5 BAR @ 6" O.C. E.W. (GRADE 60).

STANDARD SINGLE OFFSET GROOVE JOINT REQUIRED

Coating (Int):  
 Coating (Ext):

Seam Up: Flat  
 Seam Dn: Groove

Wall Thickness: 5"

Height (Ext): 12"

Weight (Net): 1561 lb  
 Volume (Net): 0.42cu.yd