

Job Name: 25-4284 - Bean Cemetery Rd Water Line Extension
 Job Location: Madisonville, KY
 Contractor: Luttrell & Sons, LLC

Plant: 100
 4/24/2026 5:36:13 PM

Tech: Jared - F
 PC: A. Chambers



Structure ID: ARV-1

P3 MH048LD12ECC

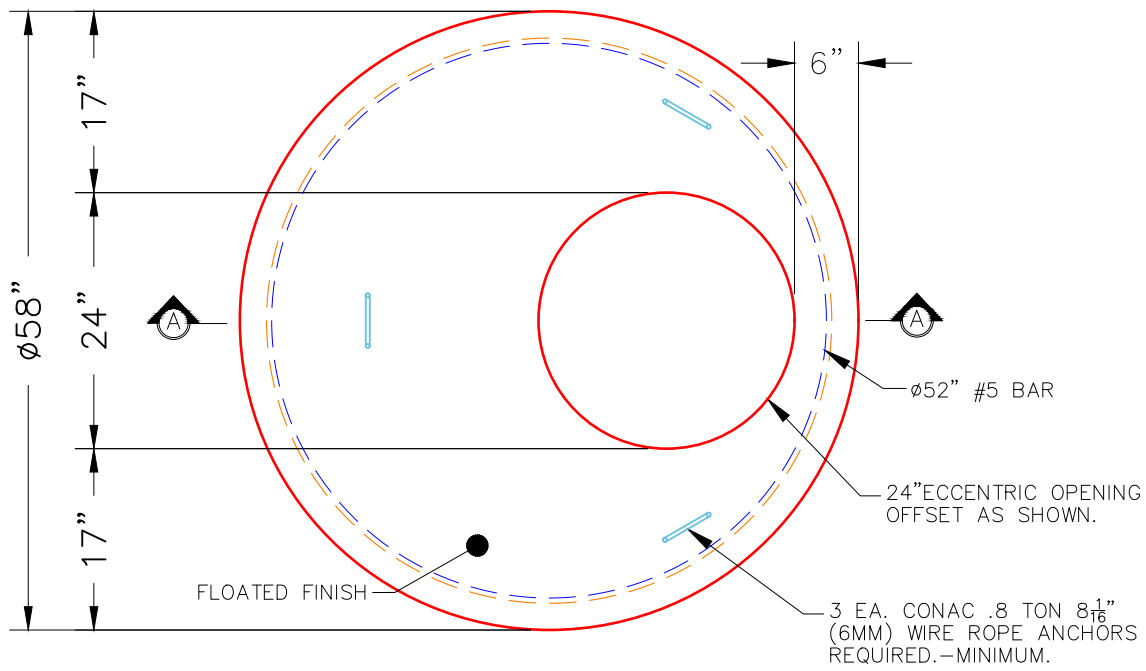
MH FLAT TOP w/ 24" ECC Hole F/G

- P4) 24" - CASTING HEIGHT - 7"
- P3) 48" - MH FLAT TOP w/ 24" ECC Hole F/G - 12"
- P2) 48" - MH DH RISER Custom Ht T/F - 57"
- P1) 48" - P.I.P. BY OTHERS - BTM SLAB F/n - 0"
- 1) CASTING - HOE MC-375-SS F/Vented Cover
- 2) 48" - Conseal CS-102 1.00" (Double)
- 2) DOGHOUSE - 14"x20"

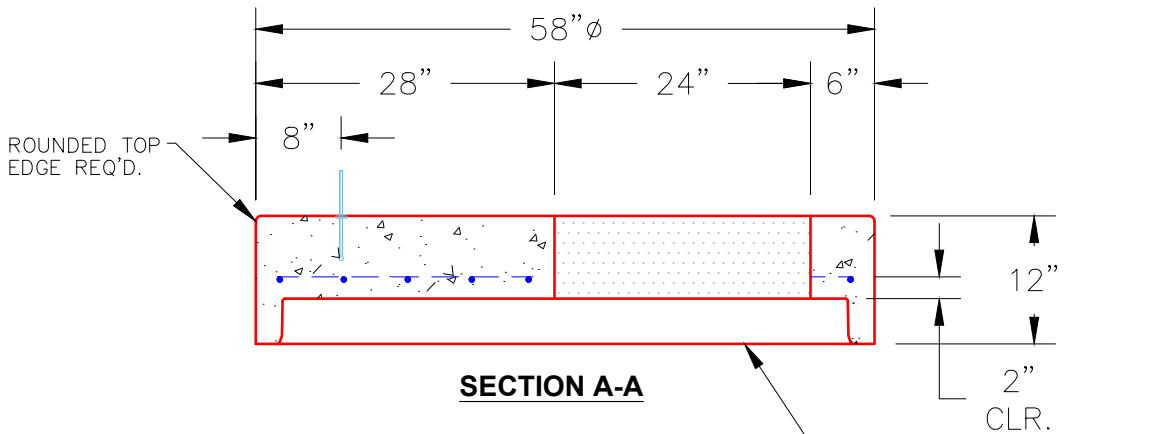
	0 lb
	1561 lb
	3724 lb
	0 lb
	271 lb
	0 lb
	0 lb
Structure Total:	5556 lb

Structure Notes:
 1. PER ASTM C478 SPECIFICATIONS.
 2. CONCRETE = 4,000 PSI AT 28 DAYS.
 3. NO STEPS AND NO INVERT CHANNEL.
 4. CASTING BY ICAST (HOE MC-375 F/VENTED COVER).
 5. FOOTERS BY OTHERS

REINFORCING PER ASTM A615 (GRADE 60).
 - TOP SLAB (As .62) #5 BARS AT 6" C.C.E.W.
 - RISER/WALLS (As .12)



PLAN VIEW



SECTION A-A

NOTES:

- 1. MANUFACTURED TO ASTM C-478 (LATEST REVISION).
- 2. CONCRETE: 4,000 PSI AT 28 DAYS.
- 3. REINFORCING: #5 BAR @ 6" O.C. E.W. (GRADE 60).

STANDARD SINGLE OFFSET GROOVE JOINT REQUIRED

Coating (Int): Coating (Ext):	Seam Up: Flat Seam Dn: Groove	Wall Thickness: 5"	Height (Ext): 12"	Weight (Net): 1561 lb Volume (Net): 0.42cu.yd
----------------------------------	----------------------------------	--------------------	-------------------	--