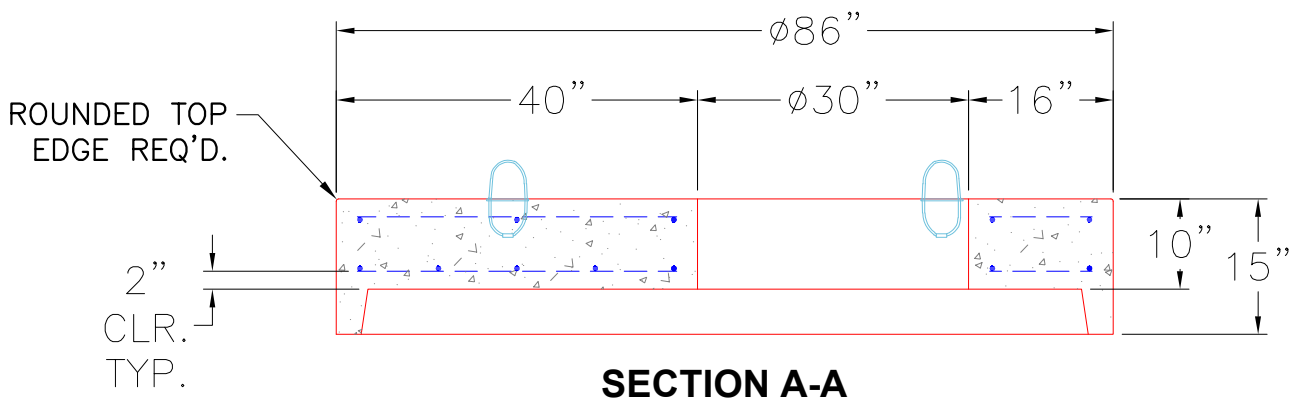
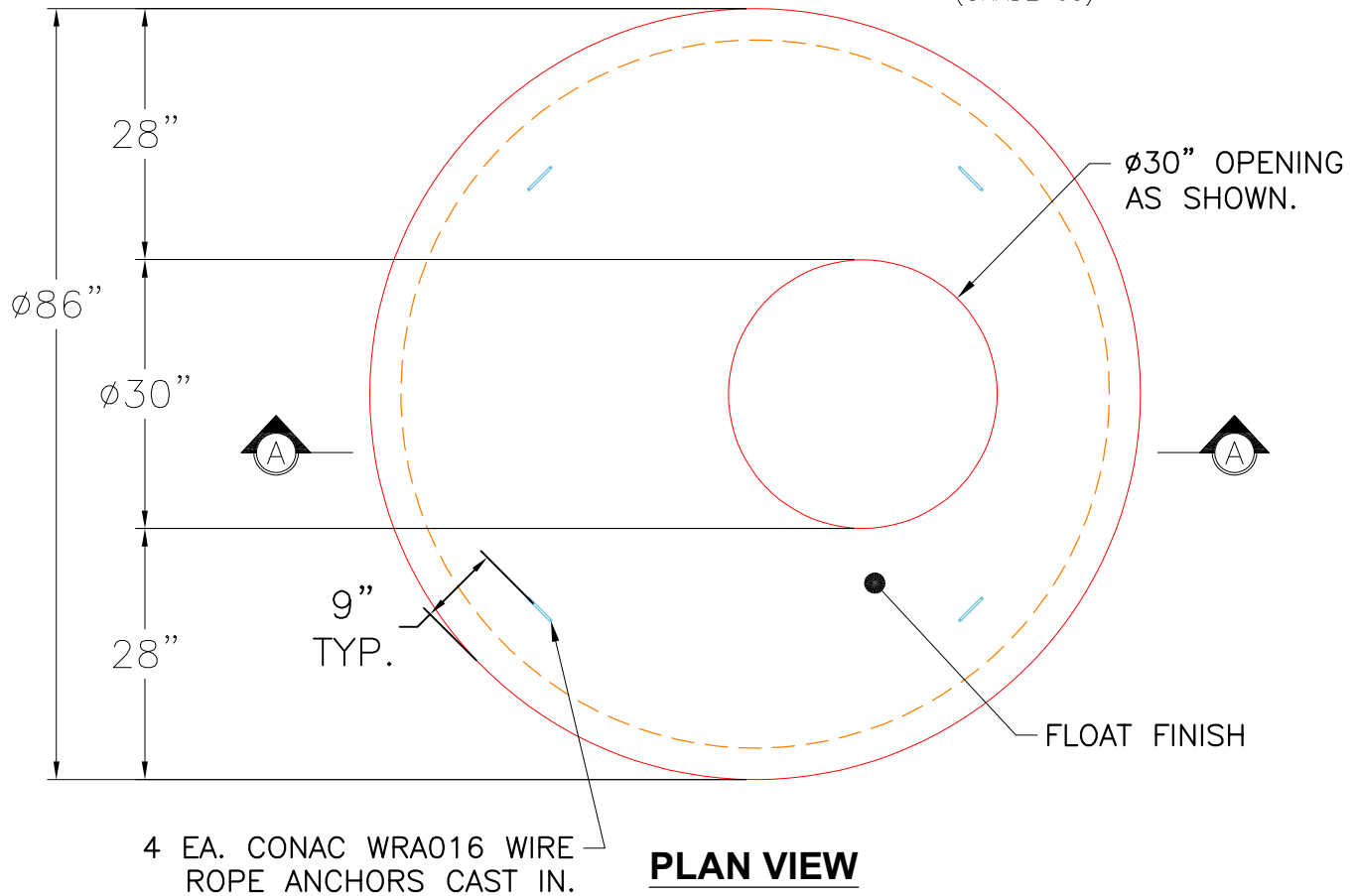


THIS DRAWING IS INTENDED TO BE PRINTED IN COLOR.

**GENERAL NOTES:**

1. MANUFACTURED TO ASTM C-478 (LATEST REVISION).
2. CONCRETE 5,000 PSI AT 28 DAYS.
3. REINFORCING: TOP MAT #4 @ 18" O.C. E.W.  
 BOTTOM MAT #4 @ 9" O.C. E.W.  
 (GRADE 60)



<b>PRODUCTION WORK ORDER</b>		PRODUCT I.D.: MH072LD15-30ECC	DESCRIPTION: 72"ø TOP SLAB, 15" HEIGHT W/ ø30" OPENING	
	<b>QUALITY CONTROL CHECKLIST</b>		PRODUCT VIEW: RIGHT SIDE UP	
	<input type="checkbox"/> ALL DIMENSIONS CORRECT.		CUSTOMER: CONTECH ENGINEERED SOLUTIONS LLC	
	<input type="checkbox"/> LIFTING ANCHORS INSTALLED.		PLANT: BEAVER DAM, KY.	
	<input type="checkbox"/> OPENING LOCATION CORRECT.		PROJECT: QUICKTRIP OH 826649-15	
	<input type="checkbox"/> REINFORCING CORRECT.		STRUCTURE: 15-CS-6	
<input type="checkbox"/> FLOAT FINISH ON SLAB SURFACE.		TOP SECTION JOINT: N/A		
<input type="checkbox"/> OUTSIDE TOP EDGE TROWELLED.		QUOTE/SALES ORDER NO: 25-4273		
<input type="checkbox"/> JOINT INSTALLED.		BASE SECTION JOINT: GROOVE		
QC CHECK INITIALS:		PC: T. SEKULA		
		DRAWING: J. COPPAGE		
		DATE: 10/24/25		
		SCALE: NTS		
		PG. 1 of 1		