

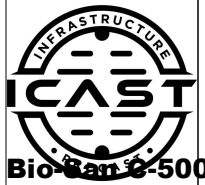
Job Name: 25-4272B Chestnut Street Utility Rehab  
 Job Location: Evansville, IN  
 Contractor: Bowen Engineering Corporation

Plant: Beaver Dam

Tech: J. Coppage

1/14/2026 11:58:52 AM

PC: A. Chambers



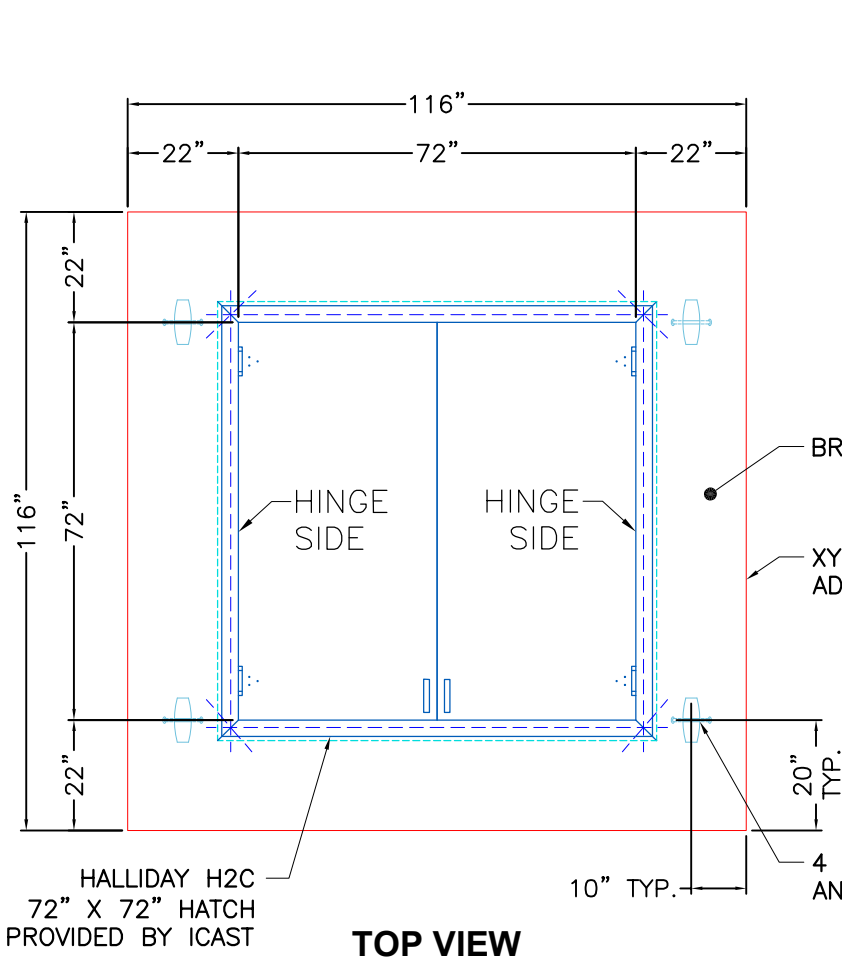
**Structure ID: 1015**

**P5 CVTS-BS**

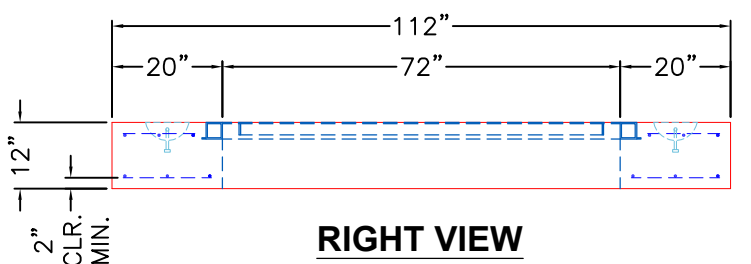
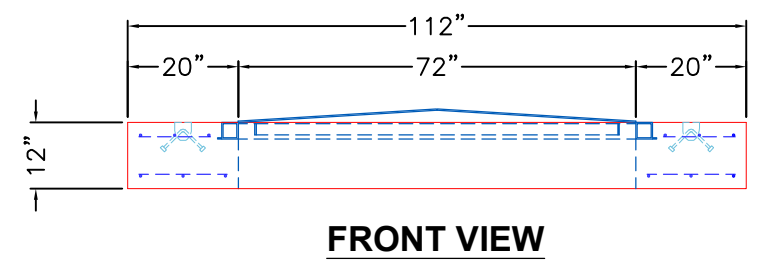
**BX FLAT LID 10inW w/72"x72" HATCH w/ Xypex Bio-San C-500**

P6) 72" x 72" - HATCH (CAST FLUSH) - 3"	100 lb
P5) 96" x 96" - BX FLAT LID 10inW w/72"x72" HATCH w/ Xypex Bio-San C-500 - 12"	8329 lb
P4) 96" x 96" - BOX RISER 10inW, Variable Ht w/ Xypex Bio-San C-500 - 62"	22059 lb
P3) 96" x 96" - BOX RISER 10inW, Variable Ht w/ Xypex Bio-San C-500 - 58"	20636 lb
P2) 96" x 96" - BOX RISER 10inW, Variable Ht w/ Xypex Bio-San C-500 - 94"	32389 lb
P1) 96" x 96" - BOX BASE 10inW, 12inF, Variable Ht w/ Xypex Bio-San C-500 - 94"	42248 lb
1) This Structure Includes a Cast-in Item	0 lb
1) HATCH (Alum.) - HALLIDAY H2C 72"x72"	235 lb
4) 96" x 96" - Conseal CS-102 1.00"	0 lb
1) 72" x 72" - Conseal CS-102 1.00"	0 lb
2) Hole - 60	0 lb
1) Hole - 40	0 lb
Structure Total:	125997 lb

- Structure Notes:**
1. PER ASTM C913 SPECIFICATIONS.
  2. CONCRETE = 4,500 PSI AT 28 DAYS.
  3. HALLIDAY 72" X 72" H2C HATCH BY ICAST.
  4. HATCH TO BE CAST INTO THE TOP SLAB.
  5. REINFORCING PER ASTM A615 (GRADE 60).  
 TOP SLAB - #6 @ 8" O.C. E.W. TOP & BTM MAT.  
 WALLS/FLOOR - #5 @ 8" O.C. E.W. DBL MAT.  
 ADDITIONAL REINFORCEMENT IN CORNERS AND AROUND OPENINGS.



- GENERAL NOTES:**
1. MANUFACTURED TO ASTM C-913 (LATEST REVISION).
  2. CONCRETE: 4,500 PSI AT 28 DAYS.
  3. XYPEX BIO-SAN C500 ADMIXTURE REQUIRED.
  4. REINFORCING: #6 BAR @ 8" O.C. E.W. TOP AND BOTTOM MAT. ADDITIONAL REINFORCEMENT AROUND THE HATCH. PER ASTM A615 (GRADE 60).
  5. WEIGHT: 5,851 LBS.
  6. HALLIDAY H2C 72" X 72" HATCH PROVIDED BY ICAST.
  7. HATCH TO BE CAST IN TOP SLAB.



Coating (Int): Coating (Ext):	Seam Up: Flat Seam Dn: Flat	Wall Thickness: 10"	Height (Ext): 12"	Weight (Net): 8329 lb Volume (Net): 2.13cu.yd
----------------------------------	--------------------------------	---------------------	-------------------	--