

Job Name: 25-4272B Chestnut Street Utility Rehab
 Job Location: Evansville, IN
 Contractor: Bowen Engineering Corporation

Plant: Beaver Dam

Tech: J. Coppage

1/14/2026 11:58:04 AM

PC: A. Chambers



Structure ID: 1014FullHT

P1 CVBASE-BS

BOX BASE 12inW, 12inF, Variable Ht w/ Xypex Bio-San C-500

P6) 72" x 72" - HATCH (CAST FLUSH) - 3"	100 lb
P5) 120" x 180" - BX FLAT LID 12inW CUSTOM w/ Xypex Bio-San C-500 - 12"	24360 lb
P4) 120" x 180" - BOX RISER 12inW, Variable Ht w/ Xypex Bio-San C-500 - 63"	41107 lb
P3) 120" x 180" - BOX RISER 12inW, Variable Ht w/ Xypex Bio-San C-500 - 82"	53505 lb
P2) 120" x 180" - BOX RISER 12inW, Variable Ht w/ Xypex Bio-San C-500 - 82"	53505 lb
P1) 120" x 180" - BOX BASE 12inW, 12inF, Variable Ht w/ Xypex Bio-San C-500 - 70"	69561 lb
1) This Structure Includes a Cast-in Item	0 lb
1) HATCH (Alum.) - HALLIDAY H2C 72"x72"	235 lb
1) CASTING - HOE MCS-295 F/C	123 lb
4) 120" x 180" - Conseal CS-102 1.00"	0 lb
1) 72" x 72" - Conseal CS-102 1.00"	0 lb
2) Hole - 60	0 lb
Structure Total:	242496 lb

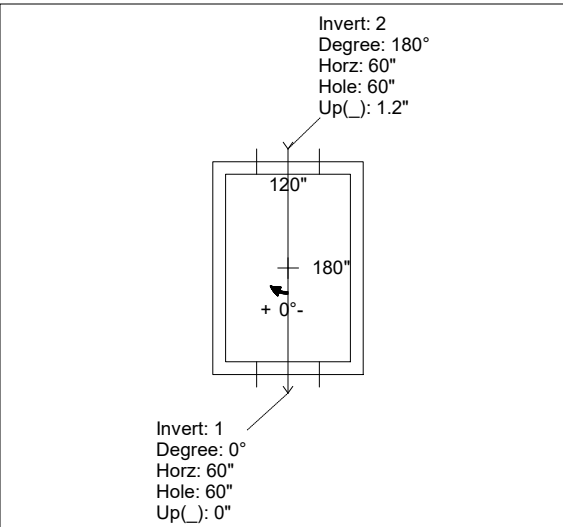
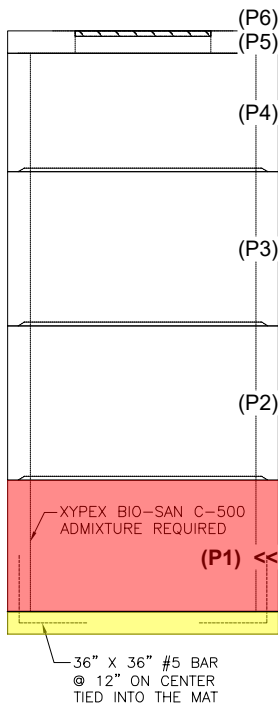
- Structure Notes:**
- PER ASTM C913 SPECIFICATIONS.
 - CONCRETE = 4,500 PSI AT 28 DAYS.
 - HALLIDAY 72" X 72" H2C HATCH BY ICAST.
 - HATCH TO BE CAST INTO THE TOP SLAB.
 - (RWS3000S STOP LOG PROVIDED BY OTHERS.)
 - REINFORCING PER ASTM A615 (GRADE 60).
 TOP SLAB - #6 @ 6" O.C. E.W. TOP & BTM MAT.
 WALLS/FLOOR - #6 @8" O.C. E.W. DBL MAT.
 ADDITIONAL REINFORCEMENT IN CORNERS AND AROUND OPENINGS.

FIRST POUR DRAWING

Rim: 379.5' Rim to Invert: 25.68' Slack: 0.31" Sump: 1.15" Step Position:

Position	Elev	Angle	Ext. (cw)	Pipe	Pipe OD	Connector	Hole	Horz Size	Up ()	Offset
Invert 1	353.82'	0°	72"	54" HDPE (DUROMAXX)	55.5"	Hole 60	60"	60"	0"	0"
Invert 2	353.92'	180°	72"	54" HDPE (DUROMAXX)	55.5"	Hole 60	60"	60"	1.2"	0"
Invert 3										
Invert 4										
Invert 5										
Invert 6										
Invert 7										
Invert 8										

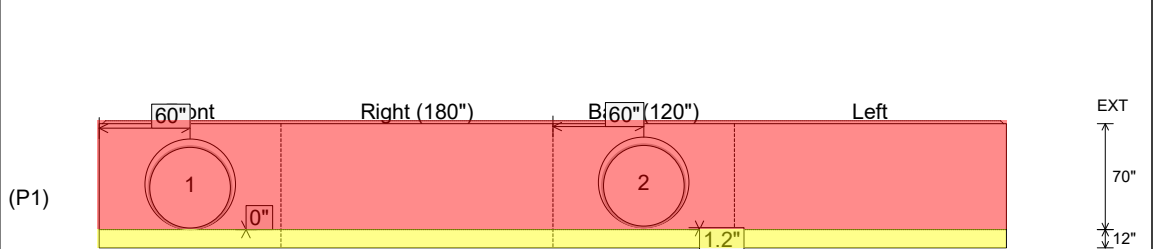
RIGHT-SIDE UP VIEW (int. dimensions)



WEIGHTS:

- FIRST POUR - 29,580 LBS.**
- SECOND POUR - 39,981 LBS.**
- TOTAL - 69,561 LBS.**

INSIDE WALL DIMENSIONS



Coating (Int): Coating (Ext):	Seam Up: Tongue Seam Dn: n/a	Wall Thickness: 12" Floor Height: 12"	Height (Int): 70" Height (Ext): 82"	Weight (Net): 69561 lb Volume (Net): 17.77cu.yd
----------------------------------	---------------------------------	--	--	--

Job Name: 25-4272B Chestnut Street Utility Rehab
 Job Location: Evansville, IN
 Contractor: Bowen Engineering Corporation

Plant: Beaver Dam

Tech: J. Coppage

1/14/2026 11:58:04 AM

PC: A. Chambers



Structure ID: 1014FullHT

P1 CVBASE-BS

BOX BASE 12inW, 12inF, Variable Ht w/ Xypex Bio-San C-500

P6) 72" x 72" - HATCH (CAST FLUSH) - 3"	100 lb
P5) 120" x 180" - BX FLAT LID 12inW CUSTOM w/ Xypex Bio-San C-500 - 12"	24360 lb
P4) 120" x 180" - BOX RISER 12inW, Variable Ht w/ Xypex Bio-San C-500 - 63"	41107 lb
P3) 120" x 180" - BOX RISER 12inW, Variable Ht w/ Xypex Bio-San C-500 - 82"	53505 lb
P2) 120" x 180" - BOX RISER 12inW, Variable Ht w/ Xypex Bio-San C-500 - 82"	53505 lb
P1) 120" x 180" - BOX BASE 12inW, 12inF, Variable Ht w/ Xypex Bio-San C-500 - 70"	69561 lb
1) This Structure Includes a Cast-in Item	0 lb
1) HATCH (Alum.) - HALLIDAY H2C 72"x72"	235 lb
1) CASTING - HOE MCS-295 F/C	123 lb
4) 120" x 180" - Conseal CS-102 1.00"	0 lb
1) 72" x 72" - Conseal CS-102 1.00"	0 lb
2) Hole - 60	0 lb
Structure Total:	242496 lb

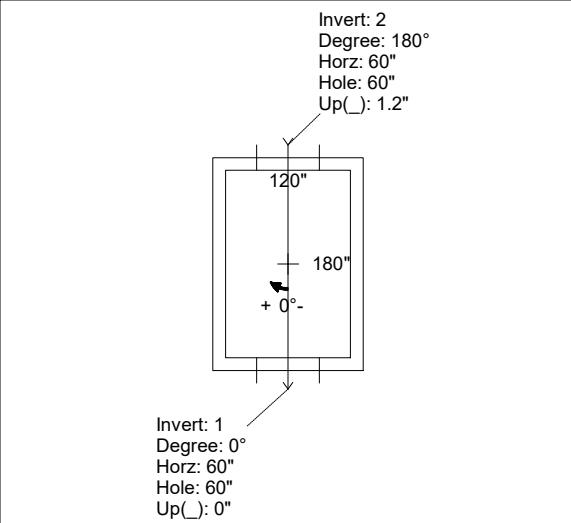
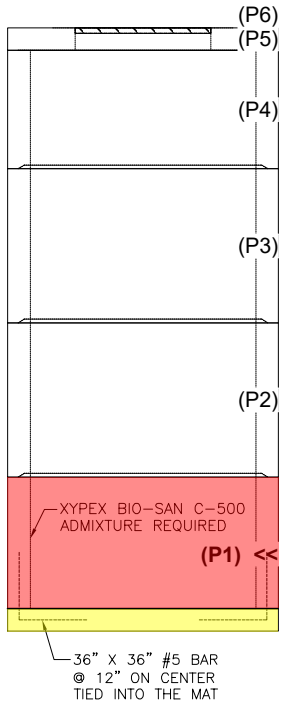
- Structure Notes:**
- PER ASTM C913 SPECIFICATIONS.
 - CONCRETE = 4,500 PSI AT 28 DAYS.
 - HALLIDAY 72" X 72" H2C HATCH BY ICAST.
 - HATCH TO BE CAST INTO THE TOP SLAB.
 - (RWS3000S STOP LOG PROVIDED BY OTHERS.)
 - REINFORCING PER ASTM A615 (GRADE 60).
 TOP SLAB - #6 @ 6" O.C. E.W. TOP & BTM MAT.
 WALLS/FLOOR - #6 @8" O.C. E.W. DBL MAT.
 ADDITIONAL REINFORCEMENT IN CORNERS AND AROUND OPENINGS.

SECOND POUR DRAWING

Rim: 379.5' Rim to Invert: 25.68' Slack: 0.31" Sump: 1.15" Step Position:

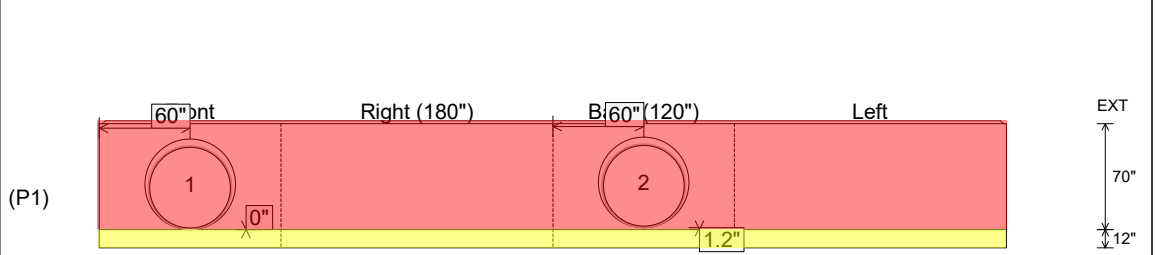
Position	Elev	Angle	Ext. (cw)	Pipe	Pipe OD	Connector	Hole	Horz Size	Up ()	Offset
Invert 1	353.82'	0°	72"	54" HDPE (DUROMAXX)	55.5"	Hole 60	60"	60"	0"	0"
Invert 2	353.92'	180°	72"	54" HDPE (DUROMAXX)	55.5"	Hole 60	60"	60"	1.2"	0"
Invert 3										
Invert 4										
Invert 5										
Invert 6										
Invert 7										
Invert 8										

RIGHT-SIDE UP VIEW (int. dimensions)



WEIGHTS:
FIRST POUR - 29,580 LBS.
SECOND POUR - 39,981 LBS.
TOTAL - 69,561 LBS.

INSIDE WALL DIMENSIONS



Coating (Int): Coating (Ext):	Seam Up: Tongue Seam Dn: n/a	Wall Thickness: 12" Floor Height: 12"	Height (Int): 70" Height (Ext): 82"	Weight (Net): 69561 lb Volume (Net): 17.77cu.yd
----------------------------------	---------------------------------	--	--	--