

Job Name: 25-4272 Chestnut Street Utility Rehab
 Job Location: Evansville, IN
 Contractor: Bowen Engineering Corporation

Plant: Beaver Dam
 10/23/2025 3:07:56 PM

Tech: J. Coppage
 PC: A. Chambers



Structure ID: 105

P1 BX2448-08BAVF

BOX BASE 8inW, 8inF, Variable Ht

- P2) 24" x 48" - CASTING HEIGHT - 8"
- P1) 24" x 48" - BOX BASE 8inW, 8inF, Variable Ht - 46"
- 1) CASTING - HOE R-3287-5 SET (F/G/H)
- 1) 24" x 48" - SGL 1"x14.5' Butyl
- 2) Hole - 20

0 lb
 6706 lb
 442 lb
 0 lb
 0 lb

 7148 lb

Structure Total: 7148 lb

Structure Notes:

1. JR HOE R-3287-5 PROVIDED BY ICAST.
2. PER ASTM C913 SPECIFICATIONS.
3. CONCRETE = 4,000 PSI AT 28 DAYS.
4. REINFORCING PER ASTM A615 (GRADE 60).
 - WALLS (As .12) #5 BARS AT 12" C.C.E.W.
 - FLOOR (As .12) #5 BARS AT 12" C.C.E.W.

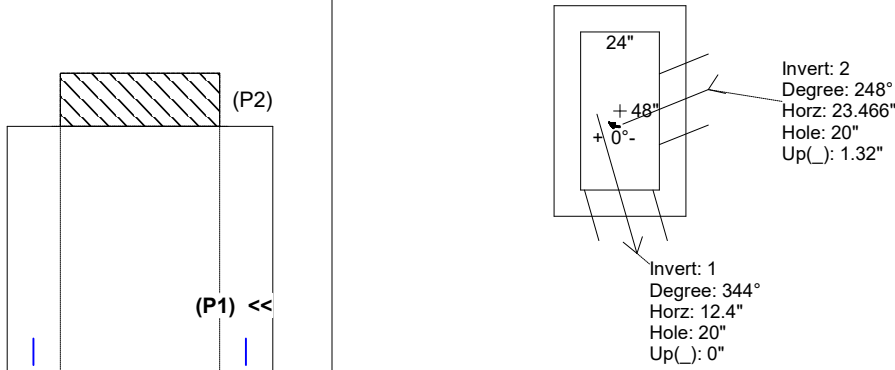
FIRST POUR DRAWING

FIRST POUR - 1,719 LBS
SECOND POUR - 4,987 LBS
TOTAL - 6,706 LBS

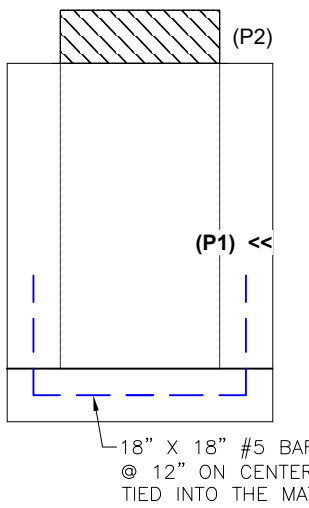
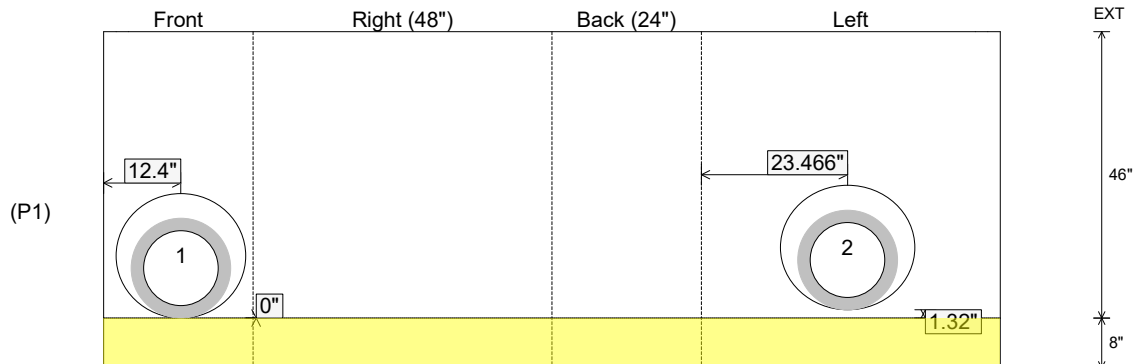
Rim: 378.58' Rim to Invert: 4.58' Slack: 2.96" Sump: 2" Step Position:

Position	Elev	Angle	Ext. (cw)	Pipe	Pipe OD	Connector	Hole	Horz Size	Up (")	Offset
Invert 1	374'	344°	18.106"	12" RCP B WALL	16"	Hole 20	20"	20.806"	0"	7"
Invert 2	374.11'	248°	28.234"	12" RCP B WALL	16"	Hole 20	20"	21.571"	1.32"	4"
Invert 3										
Invert 4										
Invert 5										
Invert 6										
Invert 7										
Invert 8										

RIGHT-SIDE UP VIEW (int. dimensions)



INSIDE WALL DIMENSIONS



Coating (Int):
 Coating (Ext):

Seam Up: Flat
 Seam Dn: n/a

Wall Thickness: 8"
 Floor Height: 8"

Height (Int): 46"
 Height (Ext): 54"

Weight (Net): 6706 lb
 Volume (Net): 1.71cu.yd

Structure ID: 105

P1 BX2448-08BAVF

BOX BASE 8inW, 8inF, Variable Ht

- P2) 24" x 48" - CASTING HEIGHT - 8"
- P1) 24" x 48" - BOX BASE 8inW, 8inF, Variable Ht - 46"
- 1) CASTING - HOE R-3287-5 SET (F/G/H)
- 1) 24" x 48" - SGL 1"x14.5' Butyl
- 2) Hole - 20"

0 lb
 6706 lb
 442 lb
 0 lb
 0 lb

 7148 lb

Structure Total:

Structure Notes:

1. JR HOE R-3287-5 PROVIDED BY ICAST.
2. PER ASTM C913 SPECIFICATIONS.
3. CONCRETE = 4,000 PSI AT 28 DAYS.
4. REINFORCING PER ASTM A615 (GRADE 60).
 - WALLS (As .12) #5 BARS AT 12" C.C.E.W.
 - FLOOR (As .12) #5 BARS AT 12" C.C.E.W.

SECOND POUR DRAWING

FIRST POUR - 1,719 LBS

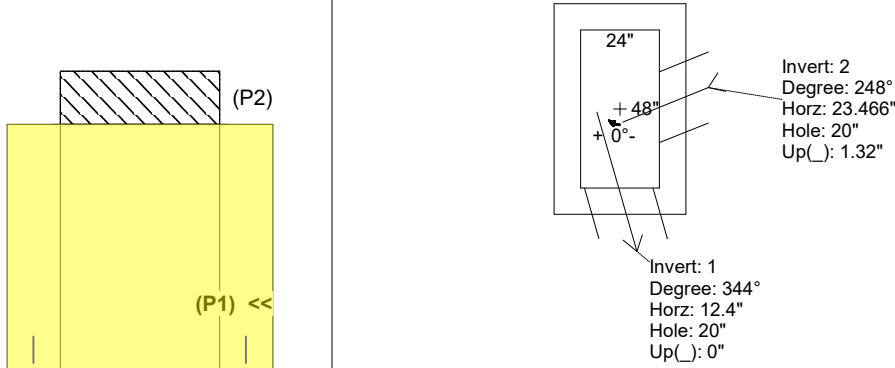
SECOND POUR - 4,987 LBS

TOTAL - 6,706 LBS

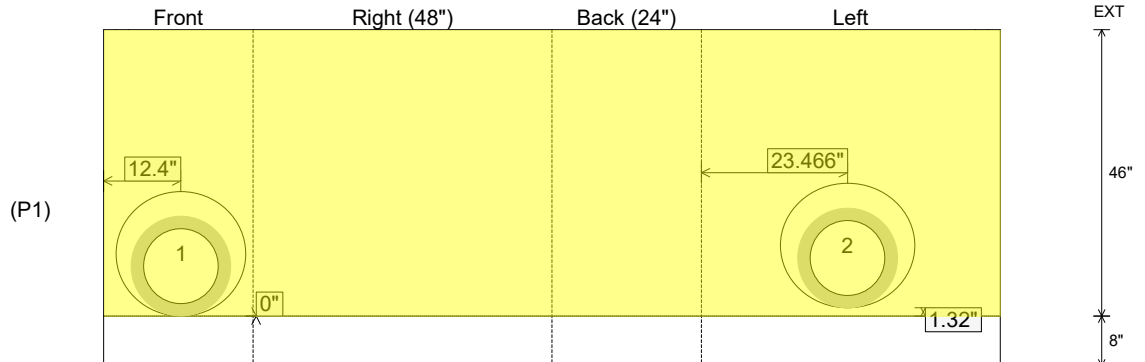
Rim: 378.58' Rim to Invert: 4.58' Slack: 2.96" Sump: 2" Step Position:

Position	Elev	Angle	Ext. (cw)	Pipe	Pipe OD	Connector	Hole	Horz Size	Up ()	Offset
Invert 1	374'	344°	18.106"	12" RCP B WALL	16"	Hole 20	20"	20.806"	0"	7"
Invert 2	374.11'	248°	28.234"	12" RCP B WALL	16"	Hole 20	20"	21.571"	1.32"	4"
Invert 3										
Invert 4										
Invert 5										
Invert 6										
Invert 7										
Invert 8										

RIGHT-SIDE UP VIEW (int. dimensions)



INSIDE WALL DIMENSIONS



Coating (Int):
Coating (Ext):

Seam Up: Flat
Seam Dn: n/a

Wall Thickness: 8"
Floor Height: 8"

Height (Int): 46"
Height (Ext): 54"

Weight (Net): 6706 lb
Volume (Net): 1.71cu.yd