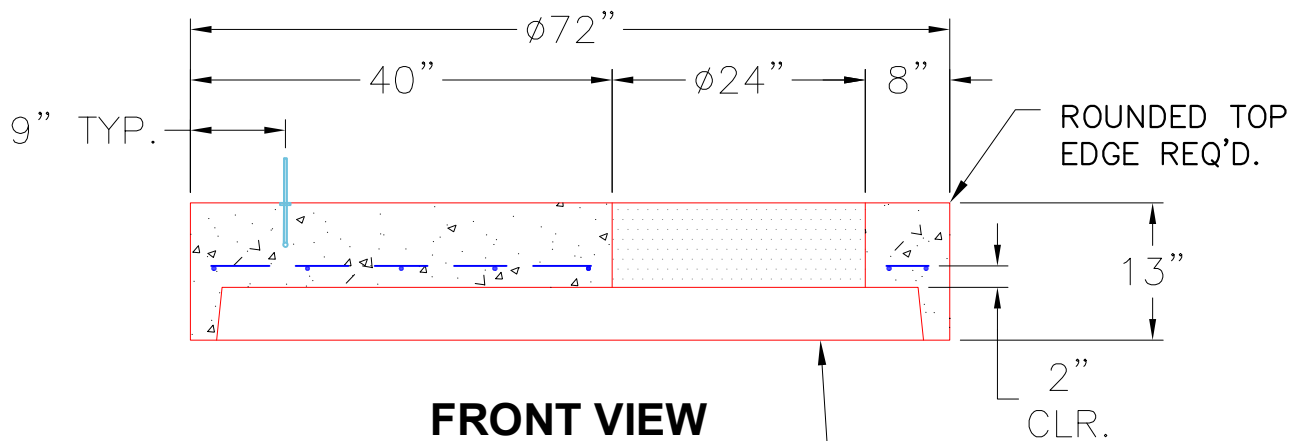
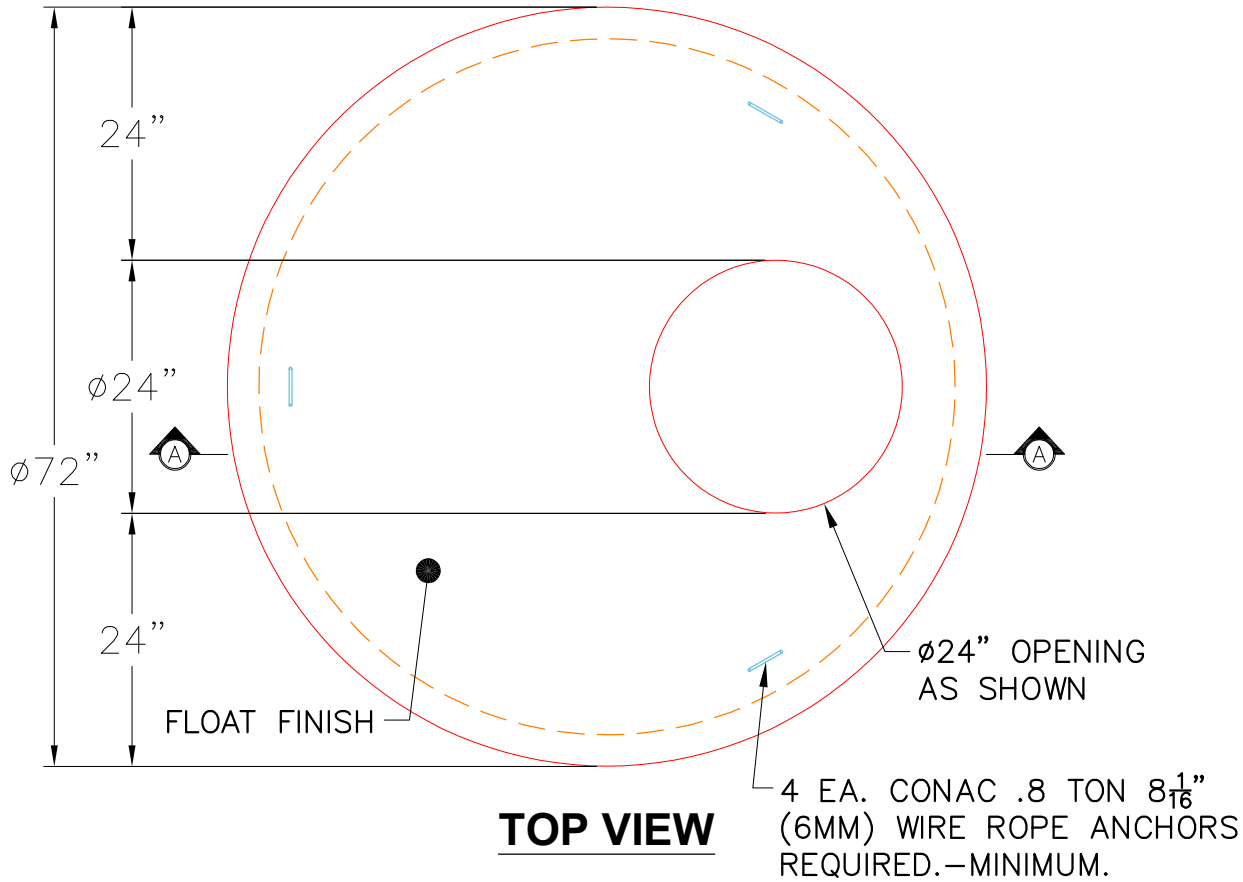


THIS DRAWING IS INTENDED TO BE PRINTED IN COLOR.

GENERAL NOTES:

1. MANUFACTURED TO ASTM C-478 (LATEST REVISION).
2. CONCRETE 5,000 PSI AT 28 DAYS.
3. REINFORCING: #4 @ 9" O.C. E.W. (GRADE 60) WITH ADDITIONAL #4 BAR AROUND OPENING.



PRODUCTION WORK ORDER		PRODUCT I.D.: MH060LD13SP	DESCRIPTION: 60"ø X 13" MH TOP SLAB 24"X 48" OPENING LOUMSD	
	QUALITY CONTROL CHECKLIST		PRODUCT VIEW: RIGHT SIDE UP	
	<input type="checkbox"/> ALL DIMENSIONS CORRECT.		CUSTOMER: BOWEN ENGINEERING CORPORATION	
	<input type="checkbox"/> LIFTERS INSTALLED.		PROJECT: CHESTNUT STREET UTILITY REHAB	
	<input type="checkbox"/> HOLE LOCATION CORRECT.		STRUCTURE: 103	
	<input type="checkbox"/> REINFORCING CORRECT.		QUOTE/SALES ORDER NO: 25-4272	
<input type="checkbox"/> FINISH ON SLAB SURFACE UNIFORM.		PC: A. CHAMBERS		
<input type="checkbox"/> OUTSIDE TOP EDGE TROWELLED.		DRAWING: J. COPPAGE		
<input type="checkbox"/> GROOVE JOINT INSTALLED.		DATE: 10/23/25		
QC CHECK INITIALS:		SCALE: NTS		
		PG. 1 of 1		