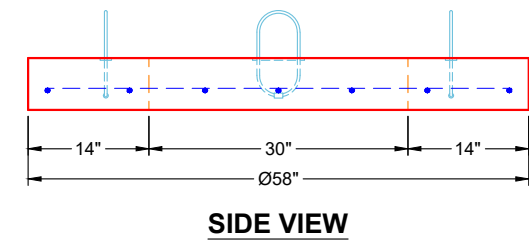
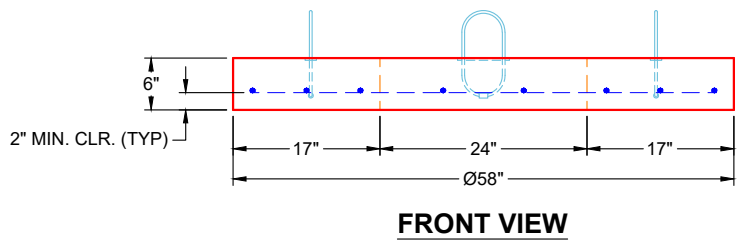
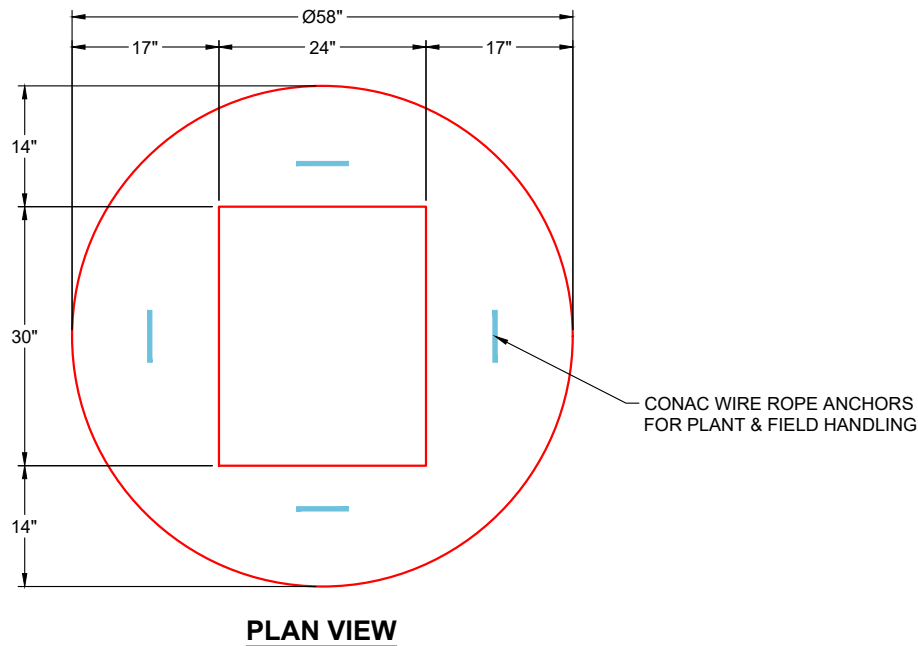


GENERAL NOTES

1. PER ASTM C-478 SPECIFICATIONS
2. CONCRETE: 4,500 PSI AT 28 DAYS
3. REINFORCEMENT: #4 BAR @ 10" C.C. E.W. (GRADE 60) - 2" MIN. REBAR CLEARANCE (TYP)
4. WEIGHT: 968 LBS
5. HOE 275-A FRAME & GRATE SUPPLIED BY ICAST



REVISION INFORMATION	
REV. DATE:	NO REVISIONS TO DATE



SUBMITTAL DRAWING: Ø48" MH 6" HT. FLAT LID SPECIAL		
CUSTOMER: SCOTT & RITTER, INC.		
PROJECT: THE PROFESSIONAL PARK LOTS 5 & 6		
STRUCTURE: ST B4 REV FLAT LID		
QUOTE/SALES ORDER NO: 25-4268B		
CHECKED BY: B. SMITH	DRAWN BY: K. CARDWELL	
DATE: 11/19/25	SCALE: NTS	PG. 1 OF 1