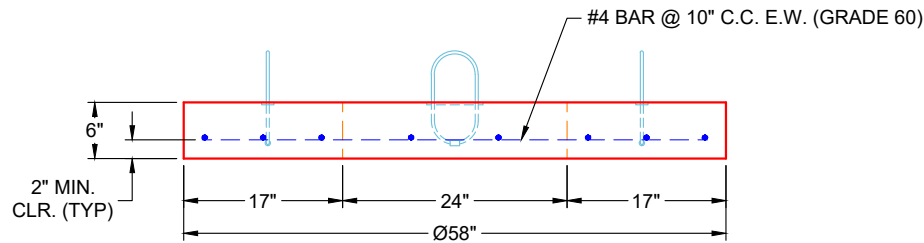


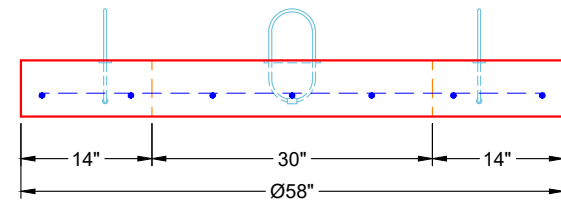
**PLAN VIEW**

**GENERAL NOTES**

1. PER ASTM C-478 SPECIFICATIONS
2. CONCRETE: 4,500 PSI AT 28 DAYS
3. REINFORCEMENT: #4 BAR @ 10" C.C. E.W. (GRADE 60) - 2" MIN. REBAR CLEARANCE (TYP)
4. WEIGHT: 968 LBS
5. HOE 275-A FRAME & GRATE SUPPLIED BY ICAST
6. LIFTERS: 4 EA. WRA016 CONAC WIRE ROPE ANCHORS FOR PLANT & FIELD HANDLING



**FRONT VIEW**



**SIDE VIEW**

**PRODUCTION WORK ORDER**

PRODUCT I.D.: MH048LD06SP

DESCRIPTION: Ø48" MANHOLE 6" HEIGHT FLAT LID SPECIAL



**QUALITY CONTROL CHECKLIST**

- ALL DIMENSIONS CORRECT.
- LIFTERS INSTALLED.
- HOLE LOCATION(S) CORRECT.
- REINFORCING CORRECT.
- SURFACE QUALITY ACCEPTABLE.
- OUTSIDE TOP EDGE TROWELLED.
- SHIPLAP JOINT INSTALLED.

PRODUCT VIEW: RIGHT SIDE UP

CUSTOMER: SCOTT & RITTER, INC.

PLANT: BEAVER DAM, KY

PROJECT: THE PROFESSIONAL PARK LOTS 5 & 6

WEIGHT: 968 LBS

STRUCTURE: ST B4 REV FLAT LID

TOP SECTION JOINT: N / A

ORDER NO: 25-4268B

BASE SECTION JOINT: FLAT

PE: J.H. ROSS

DRAWING: K. CARDWELL

QC CHECK INITIALS:

DATE: 11/20/25

SCALE: NTS

PG. 1 OF 1