

Job Name: 25-4268 - The Professional Park Lots 5 & 6
 Job Location: Bowling Green, KY
 Contractor: Scott & Ritter, Inc.

Plant: Beaver Dam, KY
 10/28/2025 6:19:50 AM

Tech: K. Cardwell
 PC: C. Goff



Structure ID: ST B4

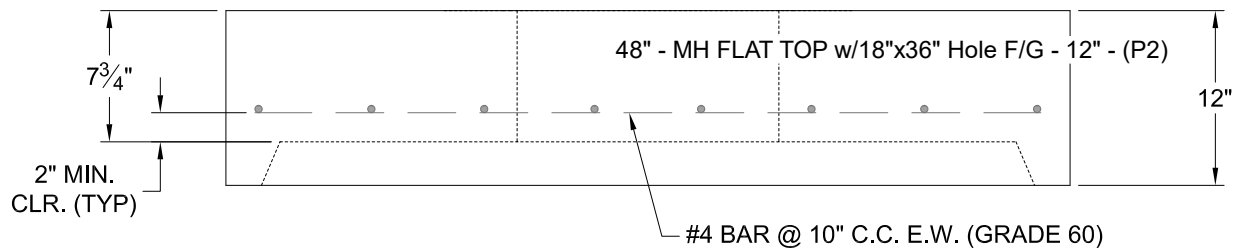
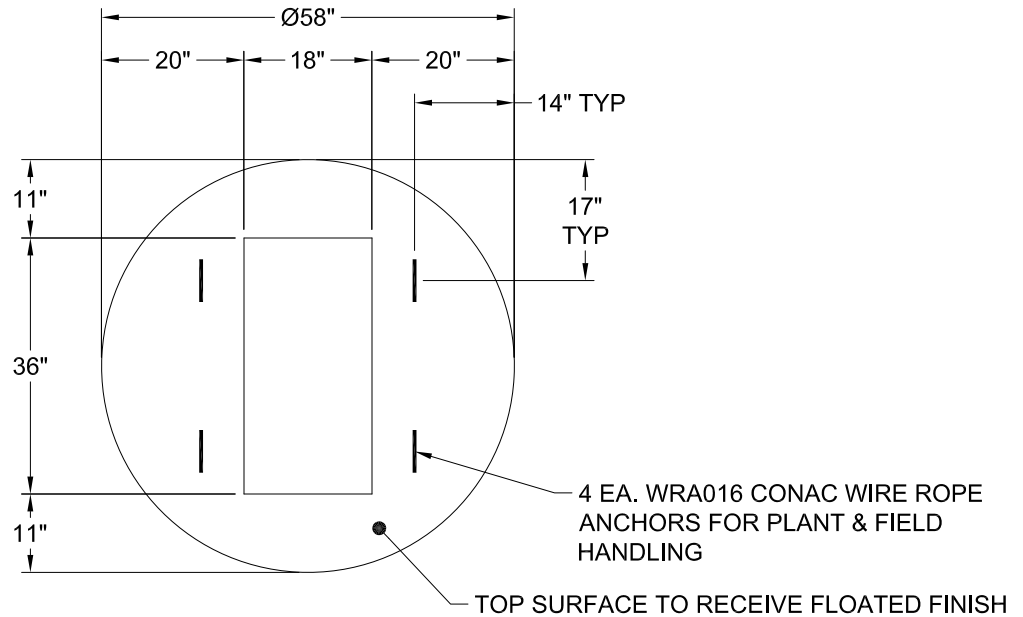
P2 MH048LD12-18x36 RECT

MH FLAT TOP w/18"x36" Hole F/G

- P3) 18" x 36" - CASTING HEIGHT - 5.5"
- P2) 48" - MH FLAT TOP w/18"x36" Hole F/G - 12"
- P1) 48" - MH BASE Custom Ht T/n - 27"
- 1) CASTING - HOE 580-A F/G
- 1) 48" - Conseal CS-102 1.00"
- 1) 18" x 36" - Conseal CS-102 1.00"
- 1) Hole - 20
- 1) Hole - 12

| | |
|------------------|---------|
| | 0 lb |
| | 2008 lb |
| | 3033 lb |
| | 574 lb |
| | 0 lb |
| | 0 lb |
| | 0 lb |
| | 0 lb |
| Structure Total: | 5615 lb |

- Structure Notes:
 STATION: 1+81.10 LN B
1. PER ASTM C-478 SPECS
 2. CONCRETE: 4,500 PSI AT 28 DAYS
 3. REINFORCEMENT: #4 BAR @ 10" C.C. E.W. (GRADE 60) - 2" MIN. REBAR CLEARANCE (TYP)
 4. NO STEPS
 5. HOE 580-A FRAME & GRATES SUPPLIED BY ICAST
 6. LIFTERS: 4 EA. WRA016 CONAC WIRE ROPE ANCHORS FOR PLANT & FIELD HANDLING



| | | | | |
|----------------------------------|----------------------------------|--------------------|-------------------|--|
| Coating (Int): Coating (Ext): | Seam Up: Flat Seam Dn: Groove | Wall Thickness: 5" | Height (Ext): 12" | Weight (Net): 2008 lb Volume (Net): 0.51cu.yd |
|----------------------------------|----------------------------------|--------------------|-------------------|--|