

Job Name: 25-4268 - The Professional Park Lots 5 & 6
 Job Location: Bowling Green, KY
 Contractor: Scott & Ritter, Inc.

Plant: Beaver Dam, KY
 10/28/2025 6:19:49 AM

Tech: K. Cardwell
 PC: C. Goff



Structure ID: ST B2

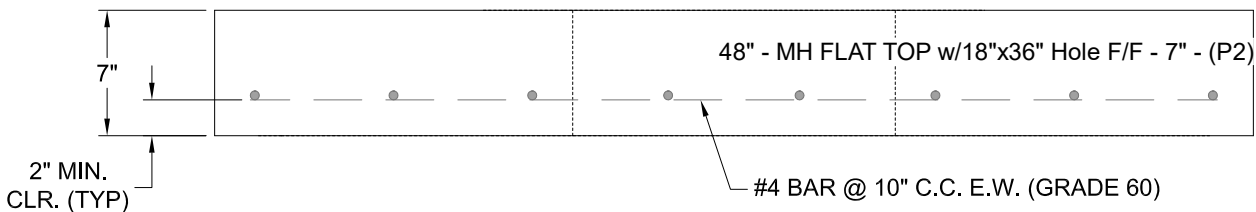
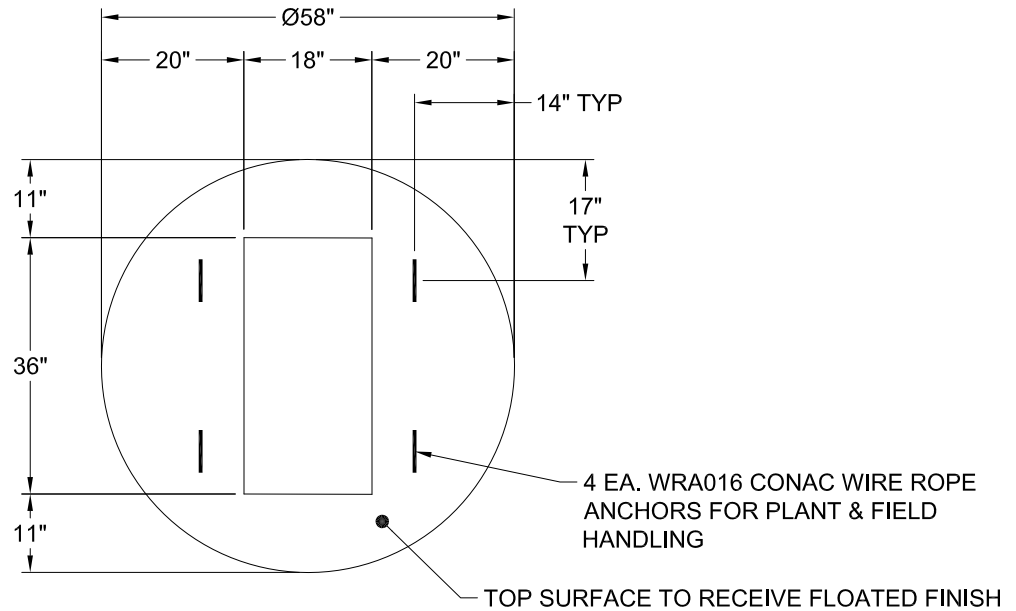
P2 MH048LD07-18x36RECT

MH FLAT TOP w/18"x36" Hole F/F

- P3) 18" x 36" - CASTING HEIGHT - 5.5"
- P2) 48" - MH FLAT TOP w/18"x36" Hole F/F - 7"
- P1) 48" - MH BASE Custom Ht F/n - 23"
- 1) CASTING - HOE 580-A F/G
- 1) 48" - Conseal CS-102 1.00"
- 1) 18" x 36" - Conseal CS-102 1.00"
- 2) Hole - 20"

	0 lb
	1171 lb
	2666 lb
	574 lb
	0 lb
	0 lb
	0 lb
	0 lb
Structure Total:	4412 lb

- Structure Notes:
 STATION: 0+13.75 LN B
1. PER ASTM C-478 SPECS
 2. CONCRETE: 4,500 PSI AT 28 DAYS
 3. REINFORCEMENT: #4 BAR @ 10" C.C. E.W. (GRADE 60) - 2" MIN. REBAR CLEARANCE (TYP)
 4. NO STEPS
 5. HOE 580-A FRAME & GRATES SUPPLIED BY ICAST
 6. LIFTERS: 4 EA. WRA016 CONAC WIRE ROPE ANCHORS FOR PLANT & FIELD HANDLING



Coating (Int): Coating (Ext):	Seam Up: Flat Seam Dn: Flat	Wall Thickness: 5"	Height (Ext): 7"	Weight (Net): 1171 lb Volume (Net): 0.3cu.yd
----------------------------------	--------------------------------	--------------------	------------------	---