



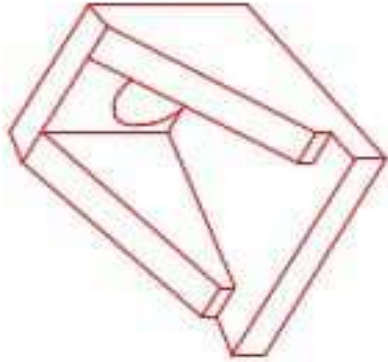
**Structure ID: 2-54261**

**P1 HWSF24F**

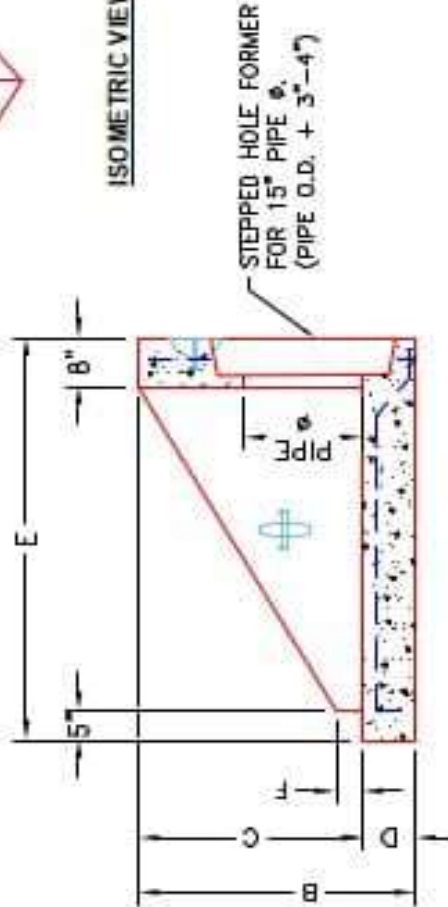
**24" - HW SLOPED & FLARED w/FLAT BOTTOM F/F**

**DIMENSIONS**

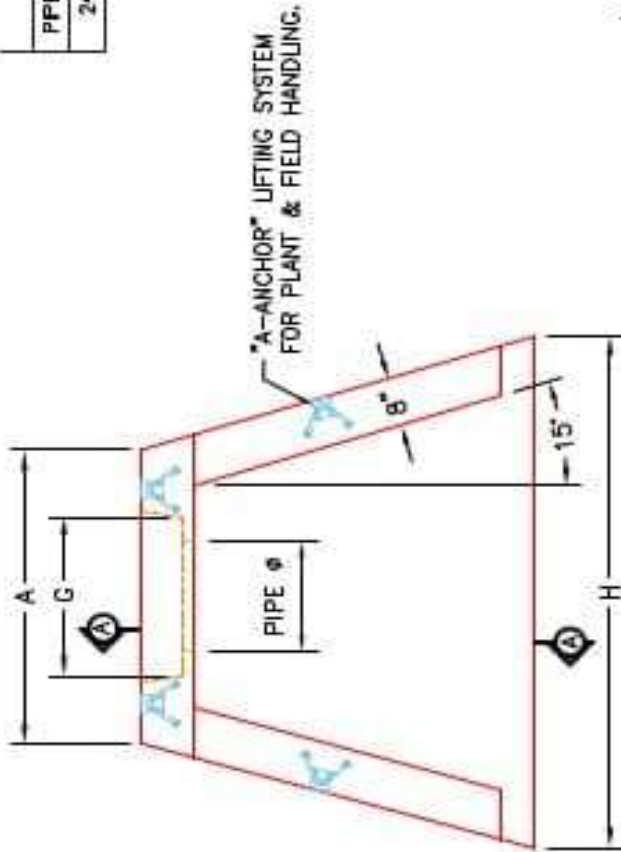
PFE #	A	B	C	D	E	F	G	H	WEIGHT
24"	3'-6"	4'-4"	2'-10"	8"	5'-0"	4"	2'-10"	6'-0"	3,711 LBS.



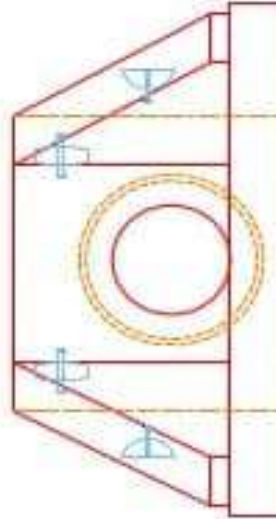
ISO METRIC VIEW



SECTION A-A



PLAN VIEW



FRONT ELEVATION

NOTES:

1. CONCRETE: KYTC APPROVED.
2. REINFORCING: #4 BAR @ 12" C/C E.W. - GRADE 60, (WITH 2" CONCRETE COVER MINIMUM)
3. REINFORCING BARS TO BE TACK WELDED OR TIED.
4. PIPE AND LIFTING ANCHOR POCKETS TO BE GROUTED WITH KYTC APPROVED NON-SHRINK GROUT.
5. DRAWING TO BE USED IN CONJUNCTION WITH KYTC STD. DRAWING RDH-020-03 AND THE STANDARD SPECIFICATIONS FOR ROAD AND BRIDGE CONSTRUCTION.
6. CHAMFER ON ALL EXPOSED EDGES.
7. PREFORMED STEPPED HOLE SIZED AS PER O.D. OF PIPE + 3"-4".



INFRASTRUCTURE PRECAST, INC.  
 381 WEST 7TH ST. BEAVERDAM, KY 42203  
 PHONE: (270) 313-2238 FAX: (270) 258-7434

KYTC 24" SLOPED & FLARED HEADWALL w/ FLAT BOTTOM	
ISSUES RESOLVED	DATE: 8-23-23
DESIGNED BY: J.L. HORSLEY	DRAWN BY: J. GOFF
WWW.I-CAST.COM	SCALE: 1/8" = 1'-0"