



Structure ID: ICAST LI3

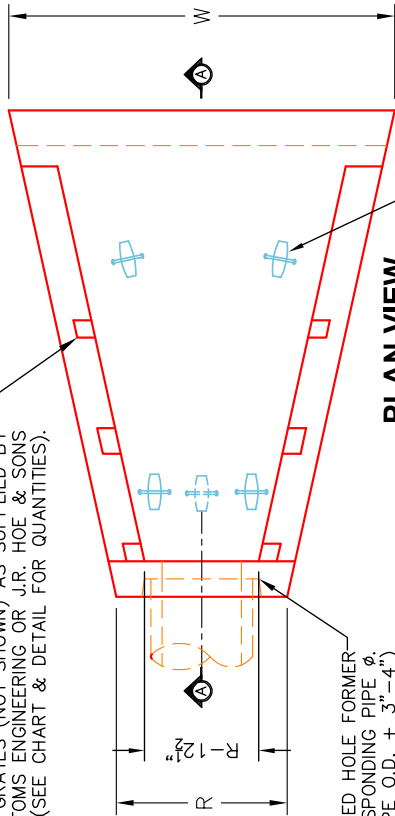
P1 HWSFBIO18

18" - SLOPED & FLARED BOX I/O F/F

~NOTES:

1. CONCRETE: KYTC APPROVED.
2. REINFORCING: #5 BAR @ 12" C/C E.W. - GRADE 60, (WITH 2" CONCRETE COVER MINIMUM)
3. REINFORCING BARS TO BE TACK WELDED OR TIED.
4. PIPE AND LIFTING ANCHOR POCKETS TO BE GROUDED WITH KYTC APPROVED NON-SHRINK GROUT.
5. DRAWING TO BE USED IN CONJUNCTION WITH KYTC STD. DRAWINGS RDB-105-06 & RDB-106-05 AND THE STANDARD SPECIFICATIONS FOR ROAD AND BRIDGE CONSTRUCTION.
6. 3/4" CHAMFER ON ALL EXPOSED EDGES.
7. PREFORMED STEPPED HOLE SIZED AS PER O.D. OF PIPE + 3"-4".

SLOTS AS REQUIRED FOR STRUCTURAL STEEL GRATES (NOT SHOWN) AS SUPPLIED BY BOTTOMS ENGINEERING OR J.R. HOE & SONS (SEE CHART & DETAIL FOR QUANTITIES).



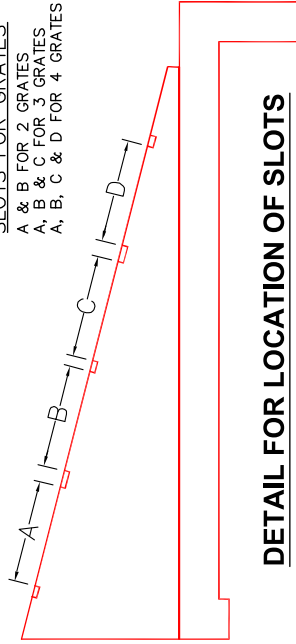
STEPPED HOLE FORMER FOR CORRESPONDING PIPE Ø (PIPE O.D. + 3"-4")

PLAN VIEW

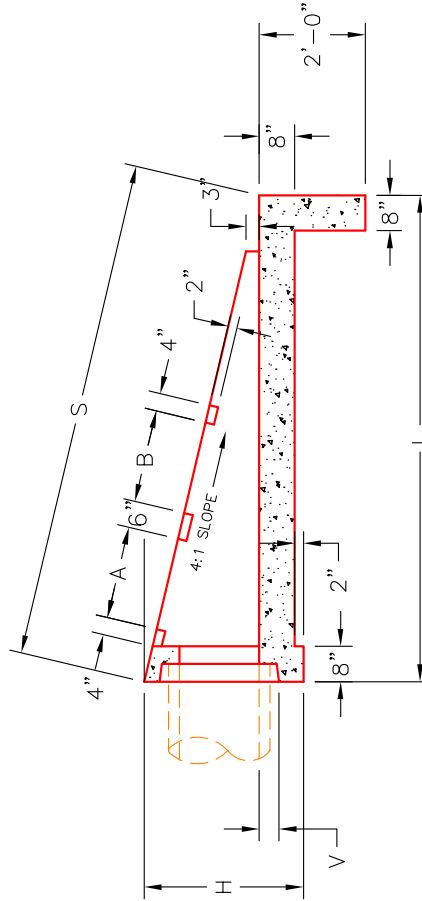
"A-ANCHOR" LIFTING SYSTEM FOR PLANT & FIELD HANDLING. (SEE CHART FOR TYPE & QTY.)

SLOTS FOR GRATES

- A & B FOR 2 GRATES
- A, B & C FOR 3 GRATES
- A, B, C & D FOR 4 GRATES



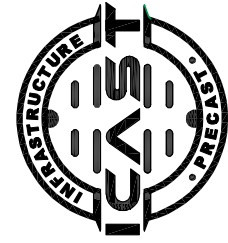
DETAIL FOR LOCATION OF SLOTS



SECTION A-A

DIMENSIONS

PIPE Ø	H	L	S	R	V	W	A	B	C	D	NO. GRATES		CONCRETE YD'	LBS. #4 BAR	LIFTING ANCHORS
											2'	3'			
15"	36"	102"	105 1/2"	35 1/2"	4"	87"	21"	21"	---	---	2 EA.	3'	1.8	81	3 EA. CONAC 6CA1B
18"	36"	102"	105 1/2"	35 1/2"	4"	87"	21"	21"	---	---	2 EA.	---	1.8	81	3 EA. CONAC 6CA1B
24"	43"	128"	132"	42 1/2"	5"	107"	33"	33"	---	---	2 EA.	2 EA.	2.7	111	4 EA. CONAC 6CA1B
30"	50"	154"	158 1/2"	49 1/2"	6"	127"	33"	33"	21"	---	1 EA.	2 EA.	3.8	146	4 EA. CONAC 6CA1B
36"	57"	180"	185 1/2"	56 1/2"	6"	147"	33"	33"	21"	21"	2 EA.	2 EA.	5.1	187	4 EA. CONAC 6CA1B



INFRASTRUCTURE PRECAST, INC.
 981 WEST 7TH ST., BEAVER DAM, KY. 42320
 PHONE: (270) 363-2238, FAX: (270) 298-7424

KYTC 15"-36" SLOPED & FLARED BOX INLET-OUTLET HEADWALL (NO SKEW)

DRAWING NO.: ET-KYTC-124
 DATE: 01-14-25
 REVIEWED BY: J.H. ROSS, PE
 DRAWN BY: N. RICHARDS
 SCALE: NTS
 WEB: WWW.ICASTINC.COM