

Job Name: 25-4257 - KYTC Pulaski Co Call 108 (254106)  
 Job Location: Somerset, KY  
 Contractor: Weddle Enterprises, Inc

Plant: 100

3/30/2026 8:52:09 AM

Tech: Jared - A

PC: Celina Goff



**Structure ID: 250**

**P1 BX3648-08BAVF**

**BOX BASE 8inW, 8inF, Variable Ht F/n**

P2) 36" x 48" - P.I.P. - BY OTHERS - 8"  
 P1) 36" x 48" - BOX BASE 8inW, 8inF, Variable Ht F/n - 26"  
 1) 36" x 48" - Conseal CS-102 1.00"  
 1) Hole - 24

0 lb  
 5421 lb  
 0 lb  
 0 lb  
 -----  
 Structure Total: 5421 lb

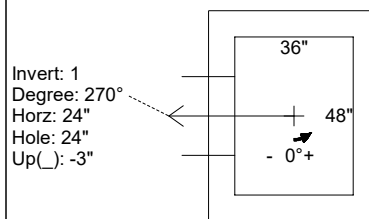
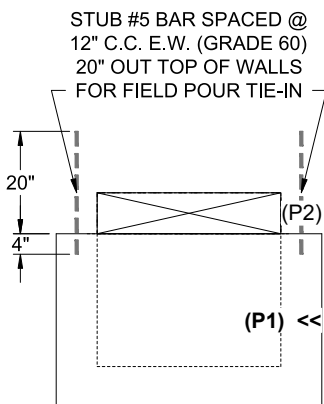
- Structure Notes:**  
 \*\* KYTC STATE PROJECT \*\*  
 1. PER KYTC DBI TYPE 5 / ASTM C-913 SPECS  
 2. CONCRETE: 4,000 PSI AT 28 DAYS  
 3. REINFORCEMENT: #5 BAR @ 12" C.C. E.W. (GRADE 60) - 2" MIN. REBAR CLEARANCE (TYP)  
 4. NO STORM INVERT  
 5. NO STEPS  
 6. HOE KY-460 TYPE 5D FRAME & GRATES SUPPLIED BY OTHERS  
 7. STUB #5 BAR SPACED @ 12" C.C. E.W. (GRADE 60) 20" OUT TOP OF WALLS FOR FIELD POUR TIE-IN

Rim: 983.49' Rim to Invert: 2.84' Slack: 0.08" Sump: 0" Step Position:

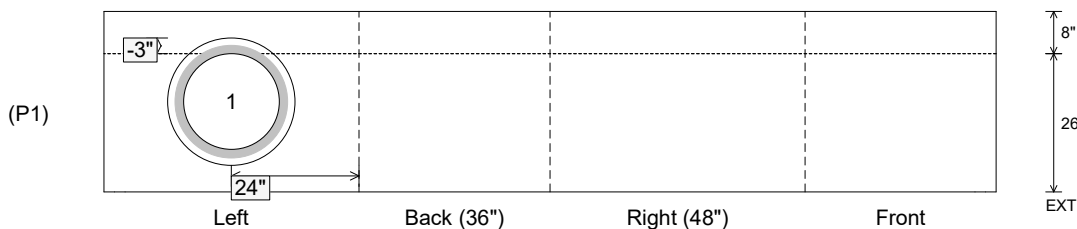
Position	Elev	Angle	Ext. (cw)	Pipe	Pipe OD	Connector	Hole	Horz Size	Up ( )	Offset
Invert 1	980.65'	270°	32"	18" HDPE	21.2"	Hole 24	24"	24"	-3"	0"
Invert 2										
Invert 3										
Invert 4										
Invert 5										
Invert 6										
Invert 7										
Invert 8										

RIGHT-SIDE UP VIEW (int. dimensions)

UPSIDE-DOWN VIEW (int. dimensions)



INSIDE WALL DIMENSIONS



Coating (Int):  
 Coating (Ext):

Seam Up: Flat  
 Seam Dn: n/a

Wall Thickness: 8"  
 Floor Height: 8"

Height (Int): 26"  
 Height (Ext): 34"

Weight (Net): 5421 lb  
 Volume (Net): 1.38cu.yd