

Job Name: 25-4256 Knoxville Quarry
 Job Location: Knoxville, TN
 Contractor: RA Alexander

Plant: 100
 11/13/2025 7:16:20 AM

Tech: J.Jorsley - A
 PC: Andy Chambers



Structure ID: 2

P2 BX096096-10LD08W

CB FLAT TOP 8"W SOLID F/F

- P2) 96" x 96" - CB FLAT TOP 8"W SOLID F/F - 10"
- P1) 96" x 96" - BOX BASE 8inW, 8inF, Variable Ht F/n - 88"
- 1) 96" x 96" - Conseal CS-102 1.00"
- 2) Hole - 76
- 8) MH Step ML-10-TDS-NCR - 10"

10526 lb
 26905 lb
 0 lb
 0 lb
 0 lb

 Structure Total: 37431 lb

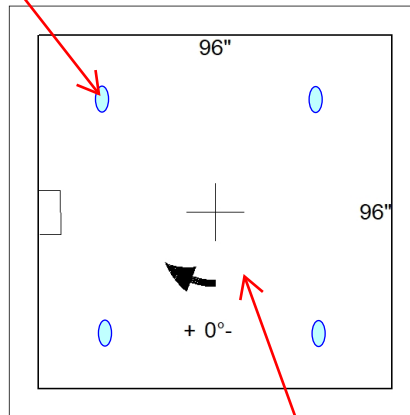
Structure Notes:

1. NO CASTING PROVIDED.
2. PER ASTM C913 SPECIFICATIONS.
3. CONCRETE = 4,500 PSI AT 28 DAYS.
4. NO INVERT CHANNEL.

REINFORCING PER ASTM A615 (GRADE 60).
 - TOP SLAB (As .62) #5 BARS AT 6" C.C.E.W.
 - WALLS (As .12) #5 BARS AT 6" C.C.E.W.
 - FLOOR (As .12) #5 BARS AT 10" C.C.E.W.

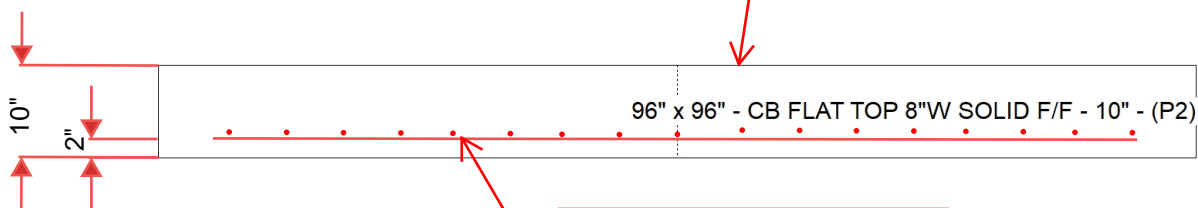
5. STRUCTURE#2 IS 10'-15' OF COVER.

4 EA. CONAC 6CA14 LIFTERS
 IN 19" FROM EACH CORNER



SOLID TOP SLAB
 NO HOLES

FLOAT FINISH
 ON TOP SURFACE



#5 BARS AT 6" C.C.E.W.

Coating (Int): Coating (Ext):	Seam Up: Flat Seam Dn: Flat	Wall Thickness: 8"	Height (Ext): 10"	Weight (Net): 10526 lb Volume (Net): 2.69cu.yd
----------------------------------	--------------------------------	--------------------	-------------------	---