



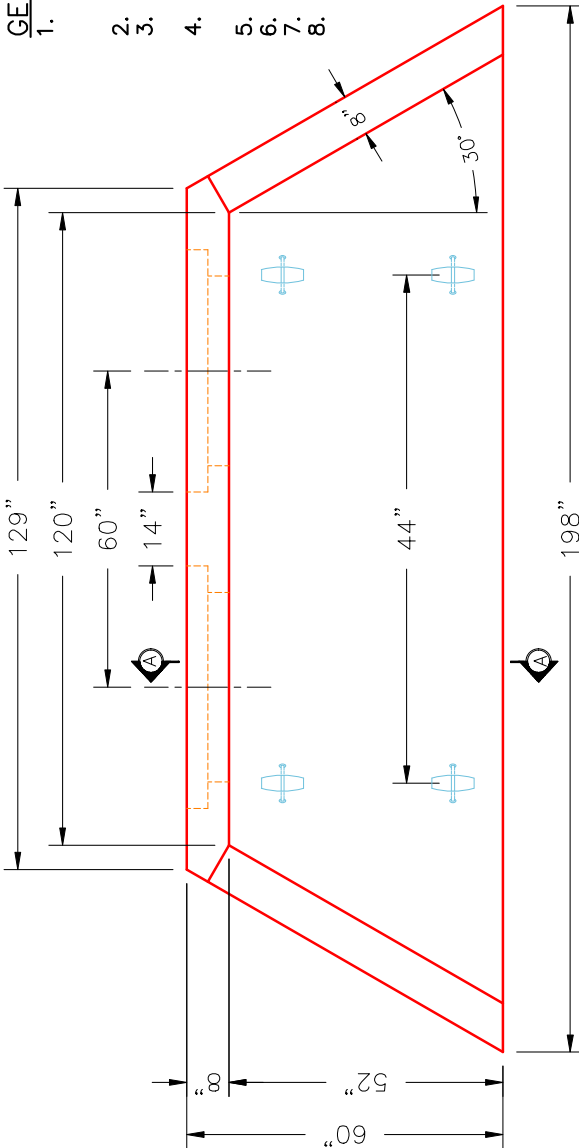
Structure ID: 7-54255 (2)

P1 HWDBLCUSTOM

36" - PIPE CULVERT DBL HEADWALL F/F

GENERAL NOTES:

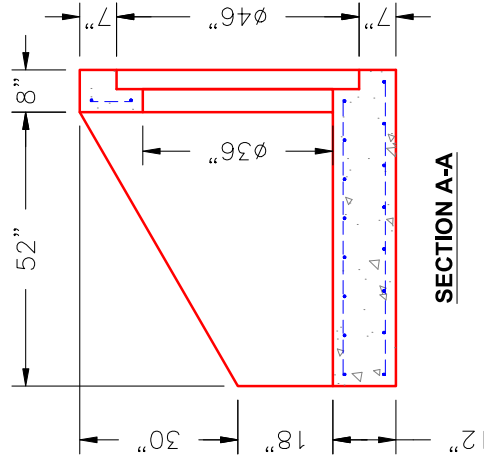
1. THE FOLLOWING STANDARD SPECIFICATIONS APPLY:
 - REINFORCING-811.02, STRUCTURE-710.03.01
 - TACK WELDING-605.03.04
2. MINIMUM 2" CONCRETE COVER ON REBAR.
3. CONCRETE-4500 PSI @ 28 DAYS.
 WITH AIR ENTRAINMENT.
4. ALL PICK UP POINTS GROUTED BY CONTRACTOR.
 WITH STACK APPROVED NON-SHRINK GROUT.
5. REINFORCING: #5 @ 12" C/C E.W. TYPICAL.
6. WEIGHT: 15,461 LBS.
7. STRUCTURE ID IS PIPE INVERT ELEVATION.
8. VERIFY THE PIPE SIZE FOR THIS STRUCTURE.
 THE STRUCTURE CALLOUT SHOWS 36" PIPE,
 BUT THE PIPE CALLOUT SHOWS 30" PIPE.



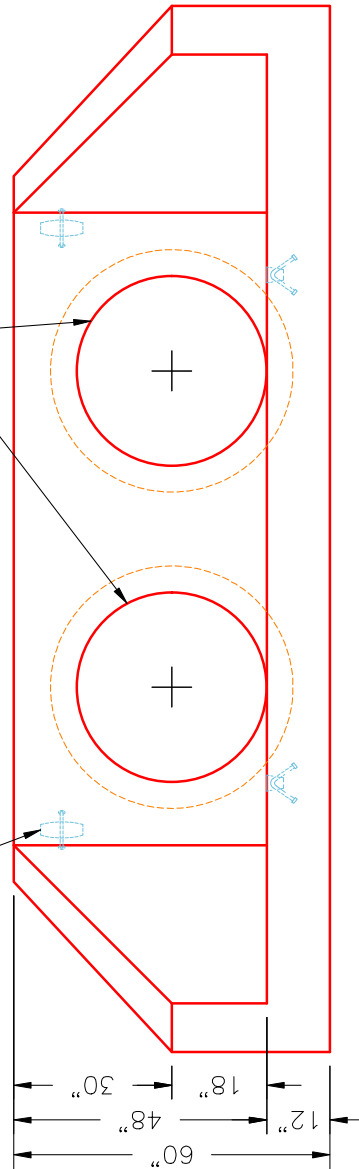
PLAN VIEW

2 EA. 46"φ STEPPED TO 36"φ HOLES FOR DOUBLE 36"φ ADS N-12 PIPES 36"φ TO MATCH INSIDE FLOOR.

6 EA. CONAC 6CA18 LIFTING ANCHORS (4 EA. IN FLOOR)



SECTION A-A



FRONT ELEVATION

SUBMITTAL DRAWING: 36" DOUBLE PC HEADWALL	
CUSTOMER: J&J EXCAVATING	
PROJECT: DAWSON SPRINGS CITY PARK PH 2	
STRUCTURE: 7-54255 (2)	
QUOTE/SALES ORDER NO: 25-4255	DRAWN BY: J. COPPAGE
PC: E. BRADLEY	SCALE: NTS
DATE: 11/12/25	PG. 1 of 1



REVISION INFORMATION

REV. DATE: NO REVISIONS TO DATE