



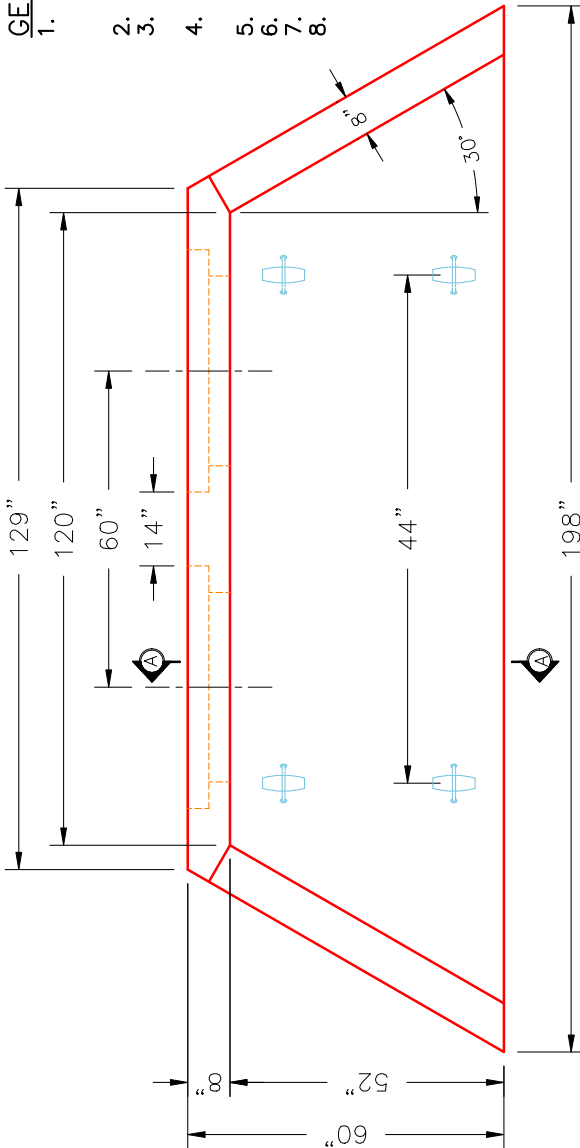
Structure ID: 7-54255 (1)

P1 HWDBLCUSTOM

36" - PIPE CULVERT DBL HEADWALL F/F

GENERAL NOTES:

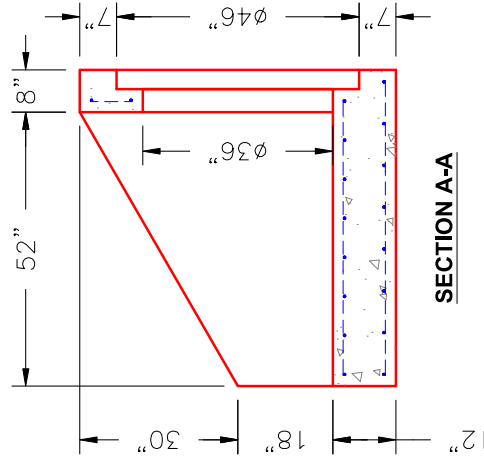
- THE FOLLOWING STANDARD SPECIFICATIONS APPLY:
 - REINFORCING-811.02, STRUCTURE-710.03.01
 - TACK WELDING-605.03.04
- MINIMUM 2" CONCRETE COVER ON REBAR.
- CONCRETE-4500 PSI @ 28 DAYS.
 WITH AIR ENTRAINMENT.
- ALL PICK UP POINTS GROUTED BY CONTRACTOR.
 WITH STACK APPROVED NON-SHRINK GROUT.
- REINFORCING: #5 @ 12" C/C E.W. TYPICAL.
- WEIGHT: 15,461 LBS.
- STRUCTURE ID IS PIPE INVERT ELEVATION.
- VERIFY THE PIPE SIZE FOR THIS STRUCTURE.
 THE STRUCTURE CALLOUT SHOWS 36" PIPE,
 BUT THE PIPE CALLOUT SHOWS 30" PIPE.



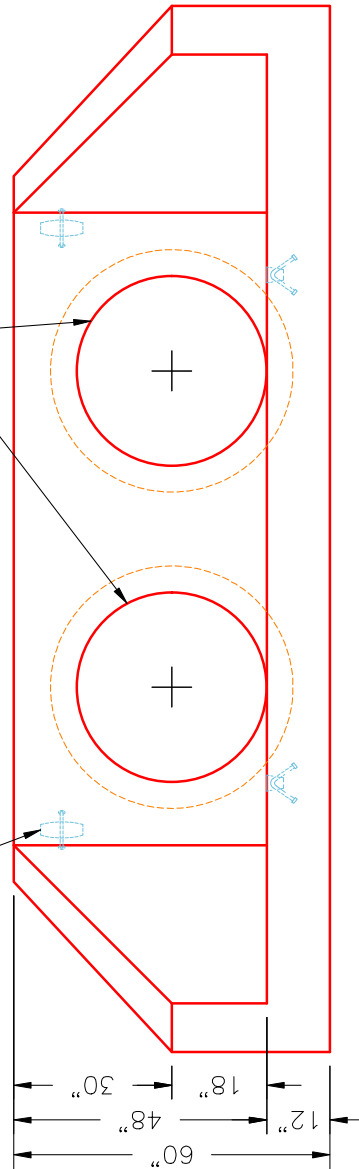
PLAN VIEW

2 EA. 46"φ STEPPED TO 36"φ HOLES
 FOR DOUBLE 36"φ ADS N-12 PIPES
 36"φ TO MATCH INSIDE FLOOR.

6 EA. CONAC 6CA18
 LIFTING ANCHORS
 (4 EA. IN FLOOR)



SECTION A-A



FRONT ELEVATION

SUBMITTAL DRAWING: 36" DOUBLE PC HEADWALL	
CUSTOMER: J&J EXCAVATING	
PROJECT: DAWSON SPRINGS CITY PARK PH 2	
STRUCTURE: 7-54255 (1)	
QUOTE/SALES ORDER NO: 25-4255	DRAWN BY: J. COPPAGE
PC: E. BRADLEY	SCALE: NTS
DATE: 11/12/25	PG. 1 of 1



REVISION INFORMATION

REV. DATE: NO REVISIONS TO DATE