



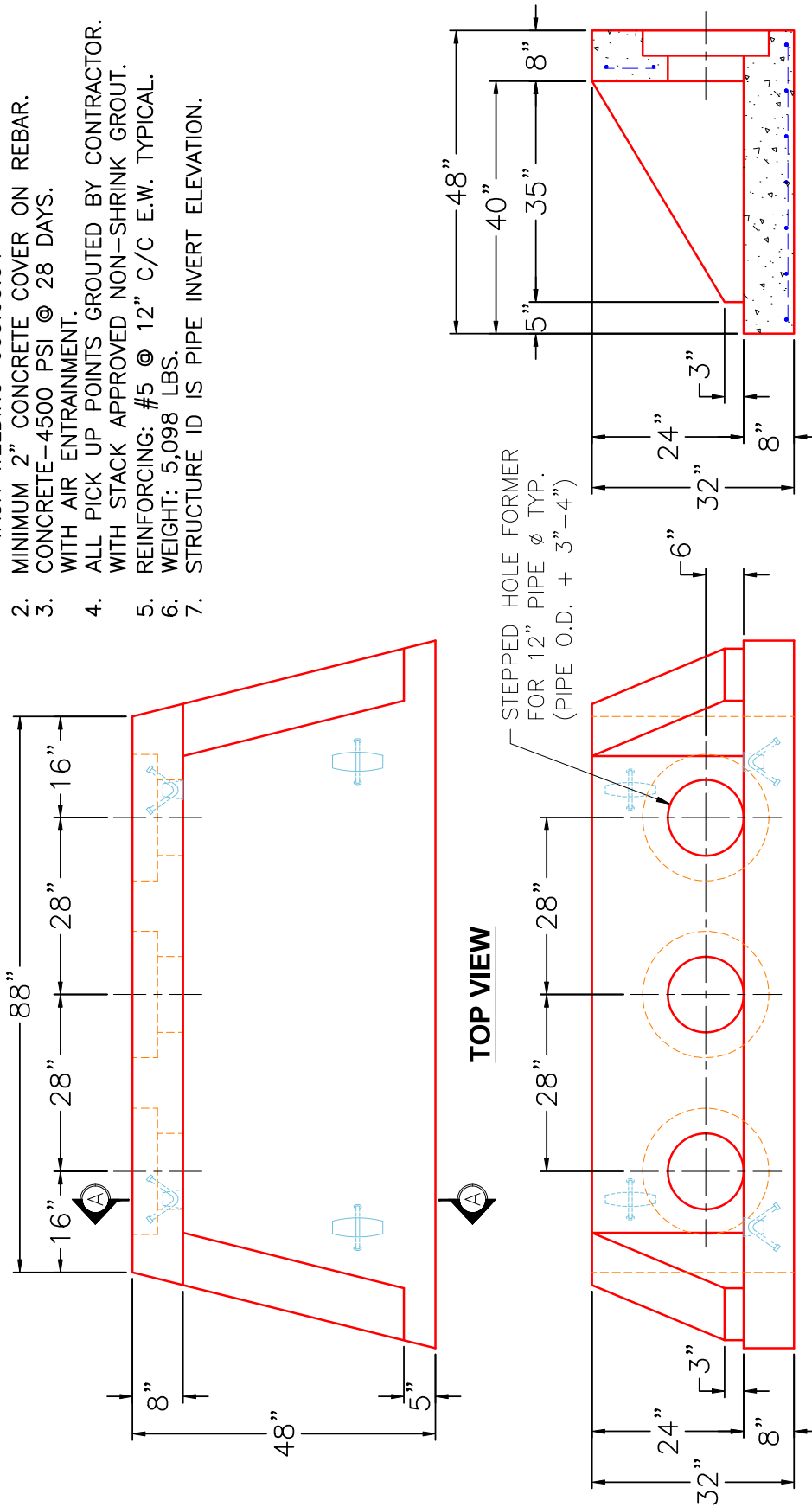
Structure ID: 5-54255 (1)

P1 HWTPLCUSTOM

12" - TRIPLE S&F HEADWALL F/F

GENERAL NOTES:

1. THE FOLLOWING STANDARD SPECIFICATIONS APPLY:
 - REINFORCING-811.02, STRUCTURE-710.03.01
 - TACK WELDING-605.03.04
2. MINIMUM 2" CONCRETE COVER ON REBAR.
3. CONCRETE-4500 PSI @ 28 DAYS.
 WITH AIR ENTRAINMENT.
4. ALL PICK UP POINTS GROUTED BY CONTRACTOR.
5. WITH STACK APPROVED NON-SHRINK GROUT.
6. REINFORCING: #5 @ 12" C/C E.W. TYPICAL.
7. WEIGHT: 5,098 LBS.
8. STRUCTURE ID IS PIPE INVERT ELEVATION.



SECTION A-A

FRONT VIEW

REVISION INFORMATION			SUBMITTAL DRAWING: 12" TRIPLE S&F HEADWALL	
REV. Δ	DATE:		CUSTOMER: J&J EXCAVATING	SCALE: NTS
	NO REVISIONS TO DATE	PROJECT: DAWSON SPRINGS CITY PARK PH 2	PG. 1 of 1	
		STRUCTURE: 5-54255 (1)		
		QUOTE/SALES ORDER NO: 25-4255		
		PC: E. BRADLEY		
		DRAWN BY: J. COPPAGE		
		DATE: 11/12/25		

THIS DRAWING IS THE PROPERTY OF INFRASTRUCTURE PRECAST, INC. ANY USE OR DUPLICATION OF THIS DRAWING WITHOUT PRIOR AUTHORIZATION IS STRICTLY PROHIBITED.