

Job Name: 25-4255 - Dawson Springs City Park Ph 2
Job Location: Dawson Springs, KY
Contractor: J & J Excavating

PC: E. Bradley
 TECH: J. Copping
 Plant: Beaver Dam, KY



Structure ID: 407.96
 Spec: KYTC
 Type: DBI TYPE 3
 Size: 36" x 36"

Rim: 411.73'
 Invert: 407.96'
 Rim to Invert: 3.77'

Sump: 0"
 Floor (Top): 407.96'
 Floor Height: 8"

Floor (Bot): 407.293'
 Overall Height: 4.417'
 Slack: 0.24"

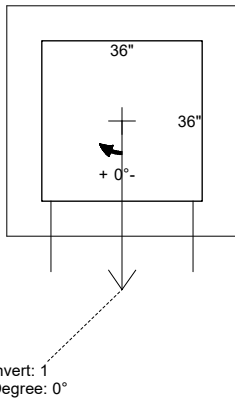
Structure Notes:

1. PER ASTM C-913 SPECIFICATIONS
2. CONCRETE: 4,000 PSI AT 28 DAYS
3. REINFORCEMENT: #5 BAR @ 12" C.C. E.W. (GRADE 60)
4. NO STORM INVERT
5. NO STEPS
6. HOE KY-328 FRAME & GRATES SUPPLIED BY ICAST
7. STUB #5 BAR @ 12" C.C. E.W. (GRADE 60) 20" OUT TOP OF WALLS FOR FIELD POUR TIE-IN

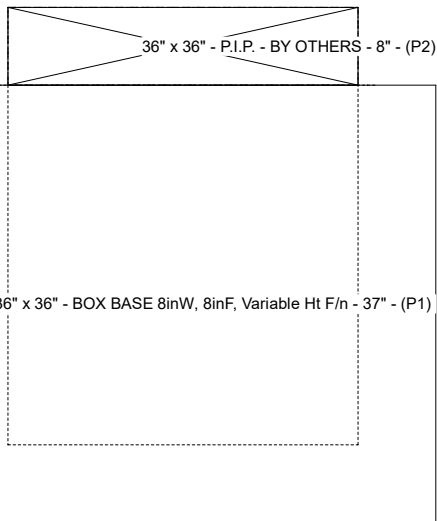
STRUCTURE SUMMARY:

P2) 36" x 36" - P.I.P. - BY OTHERS - 8" 0 lb
 P1) 36" x 36" - BOX BASE 8inW, 8inF, Variable Ht F/n - 37" 5647 lb
 1) CASTING - HOE KY-328 SET (DBI 3) 328 lb
 1) 36" x 36" - Conseal CS-102 1.00" 0 lb
 1) Hole - 32 0 lb

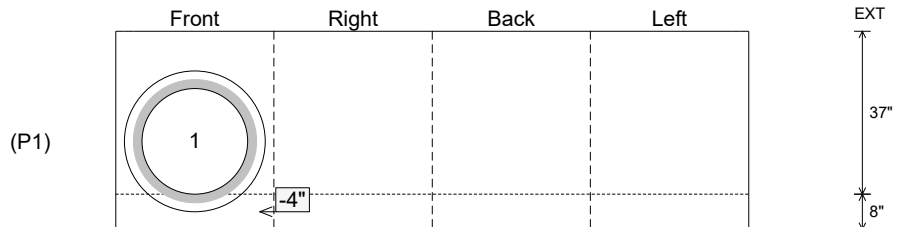
 Structure Total: 5975 lb



Position	Elev	Angle	Pipe	Pipe OD	Hole	Connector	Up ()	Ref
Rim	411.73'							
Reducer								
Invert 1	407.96'	0°	24" ADS N-12	28"	32"	Hole 32	-4"	P1
Invert 2								
Invert 3								
Invert 4								
Invert 5								
Invert 6								
Invert 7								
Invert 8								



Cast (Int. Dim.) - Interior Dimensions



Submittal Drawing
 4/10/2026 10:10:34 AM

SUBMITTAL
 APPROVED BY: