



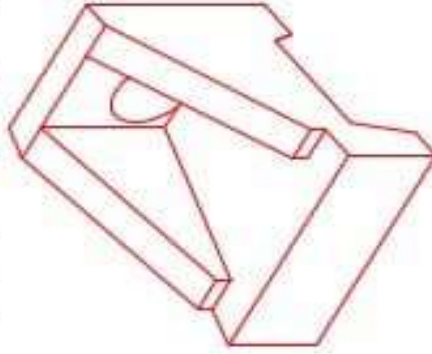
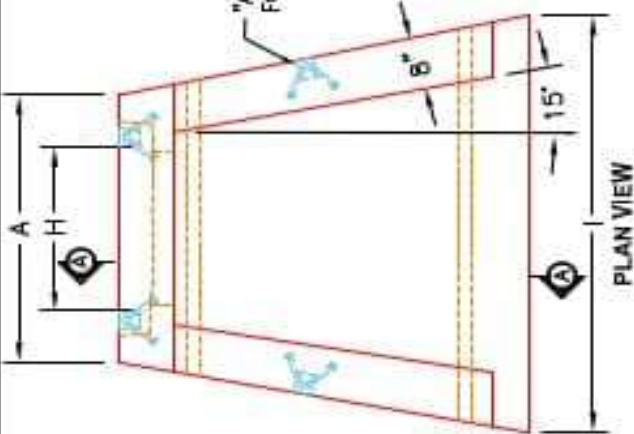
Structure ID: 4-54255 (4)

P1 HWSF24

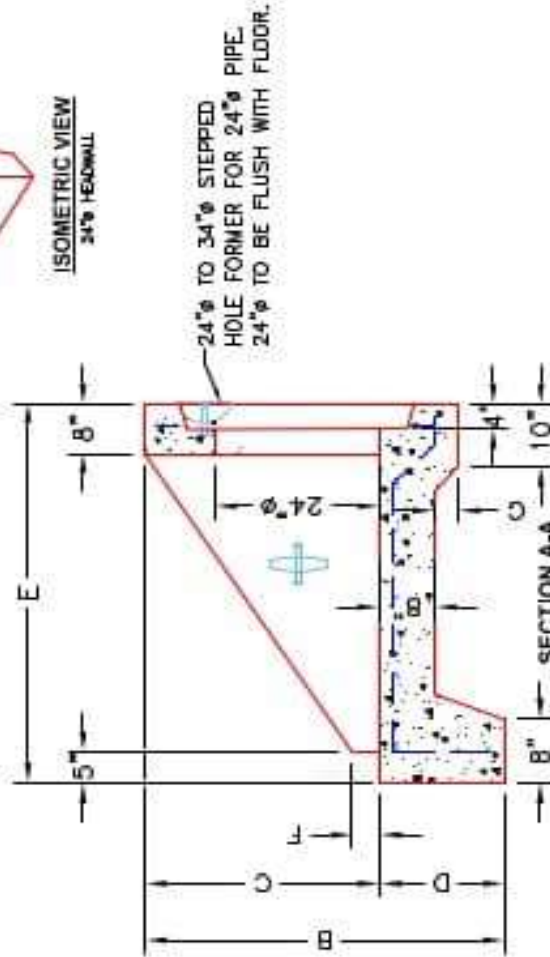
24" - SLOPED & FLARED HEADWALL F/F

PIPE Ø	A	B	C	D	E	F	G	H	I	WEIGHT
24"	3'-8"	4'-4"	2'-10"	1'-8"	5'-0"	4"	3"	2'-10"	6'-0"	4,956 LBS.

"A-ANCHOR" LIFTING SYSTEM FOR PLANT & FIELD HANDLING.

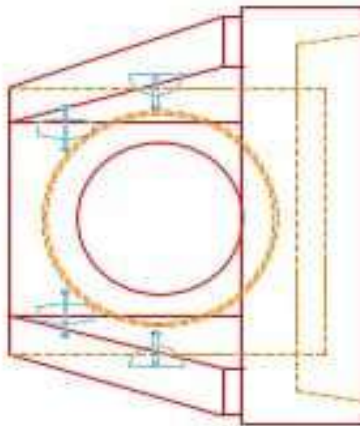


ISOMETRIC VIEW
24" HEADWALL



24"Ø TO 34"Ø STEPPED HOLE FORMER FOR 24"Ø PIPE. 24"Ø TO BE FLUSH WITH FLOOR.

FRONT ELEVATION



NOTES:

1. CONCRETE 4000 PSI @ 28 DAYS.
2. REINFORCING #4 BAR @ 12" C/C E.W.-GRADE 60, (WITH 3" CONCRETE COVER MINIMUM)
3. REINFORCING BARS TO BE TACK WELDED OR TIED.
4. DRAWING TO BE USED IN CONJUNCTION WITH KYTC STD. DRAWING RCH-020-03 AND THE STANDARD SPECIFICATIONS FOR ROAD AND BRIDGE CONSTRUCTION.
5. #1 CHAMFER ON ALL EXPOSED EDGES.

PRODUCTION WORK ORDER

- QUALITY CONTROL CHECKLIST
- ALL DIMENSIONS CORRECT.
 - LIFTERS INSTALLED.
 - STEPPED HF CORRECT SIZE.
 - REINFORCING CORRECT.
 - DISSIPATOR BLOCK INSTALLED.
 - EDGES CHAMFERED.
 - ALL PATCHWORK ACCEPTABLE.



DESCRIPTION: KYTC 24"Ø SLOPED & FLARED HEADWALL
CUSTOMER: STOOK
PROJECT: STOCK INVENTORY
STRUCTURE ID.: N/A
QUOTE/SALES ORDER NO: N/A
CHECK: J.H. ROSS, PE
DATE: REV. 4/22/24
DRAWING: N. RICHARDS
SCALE: NTS
PG. 1 of 1

PRODUCT I.D.: HWSF24
PRODUCT VIEW: RIGHT SIDE UP
PLANT: BEAVER DAM, KY.
WEIGHT: 4,956 LBS.
TOP SECTION JOINT: N/A
BASE SECTION JOINT: N/A
QC CHECK INITIALS: