

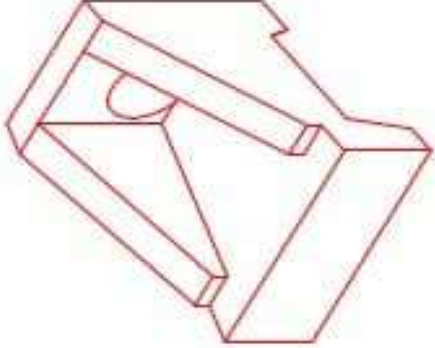


Structure ID: 3-54255 (4)

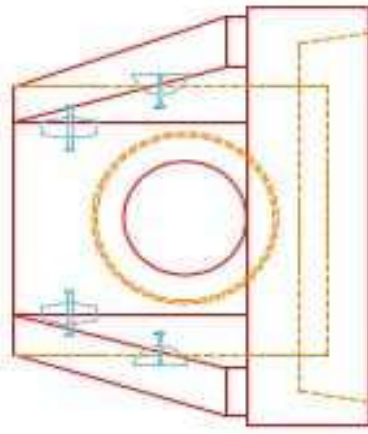
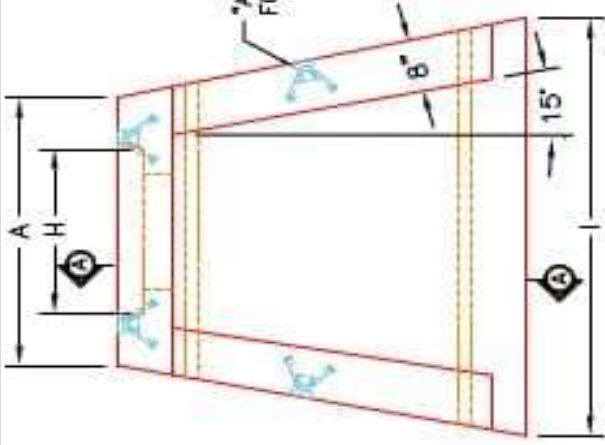
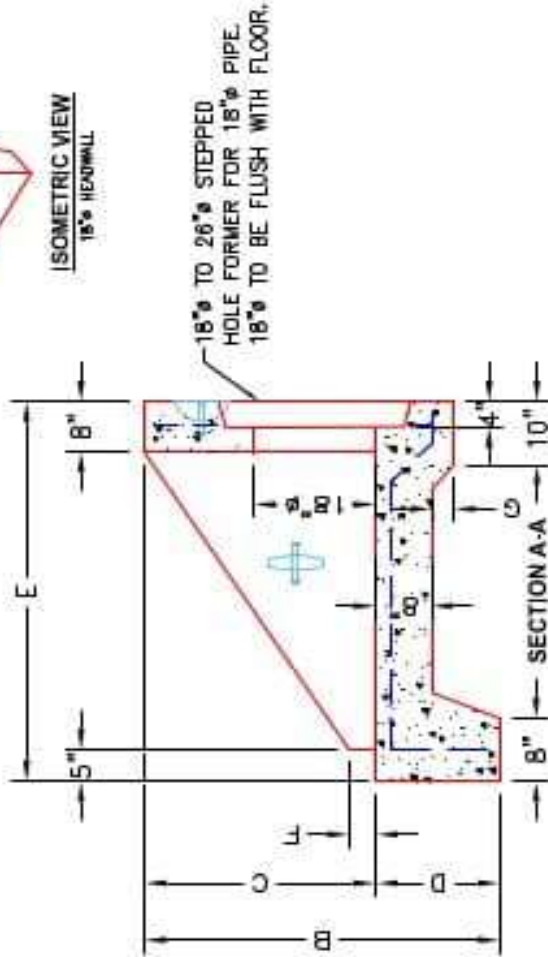
P1 HWSF18

18" - SLOPED & FLARED HEADWALL F/F

PIPE Ø	A	B	C	D	E	F	G	H	I	WEIGHT
18"	3'-10"	3'-9"	2'-5"	1'-6"	4'-6"	4"	2 1/2"	2'-2"	5'-2"	3,640 LBS.



A-ANCHOR LIFTING SYSTEM FOR PLANT & FIELD HANDLING.



- NOTES:**
1. CONCRETE: 4500 PSI @ 28 DAYS.
 2. REINFORCING: #4 BAR @ 12" C/C E-W - GRADE 60, (WITH 2" CONCRETE COVER MINIMUM)
 3. REINFORCING BARS TO BE TACK WELDED OR TIED.
 4. DRAWING TO BE USED IN CONJUNCTION WITH KYTC STD. DRAWING RDH-000-03 AND THE STANDARD SPECIFICATIONS FOR ROAD AND BRIDGE CONSTRUCTION.
 5. CHAMFER ON ALL EXPOSED EDGES.

PRODUCTION WORK ORDER	
DESCRIPTION: KYTC 18" SLOPED & FLARED HEADWALL	PRODUCT I.D.: HWSF18
CUSTOMER: STOCK	PRODUCT VIEW: RIGHT SIDE UP
PROJECT: STOCK INVENTORY	PLANT: BEAVER DAM, KY.
STRUCTURE ID.: N/A	WEIGHT: 3,640 LBS.
QUOTE/SALES ORDER NO: N/A	TOP SECTION JOINT: N/A
CHECK: JH. ROSS, PE	BASE SECTION JOINT: N/A
DATE: REV. 4/22/24	QC CHECK INITIALS:
SCALE: NTS	PG. 1 of 1

