

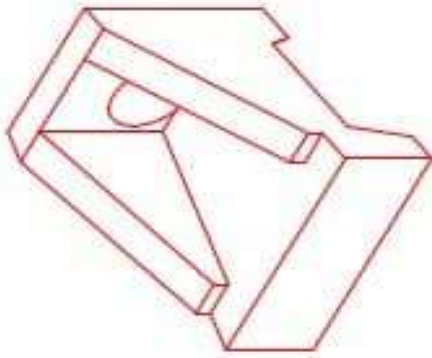


**Structure ID: 3-54255 (2)**

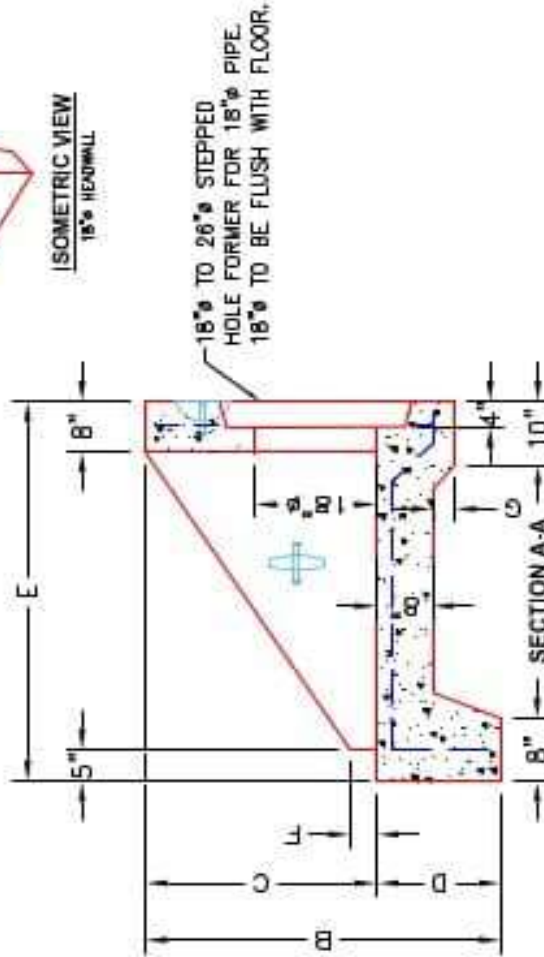
**P1 HWSF18**

**18" - SLOPED & FLARED HEADWALL F/F**

DIMENSIONS										
PIPE Ø	A	B	C	D	E	F	G	H	I	WEIGHT
18"	3'-10"	3'-9"	2'-5"	1'-6"	4'-6"	4"	2 1/2"	2'-2"	5'-2"	3,640 LBS.

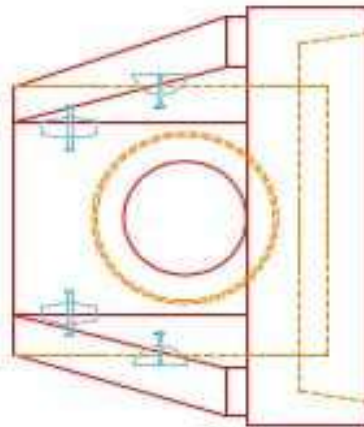


ISOMETRIC VIEW  
18" HEADWALL

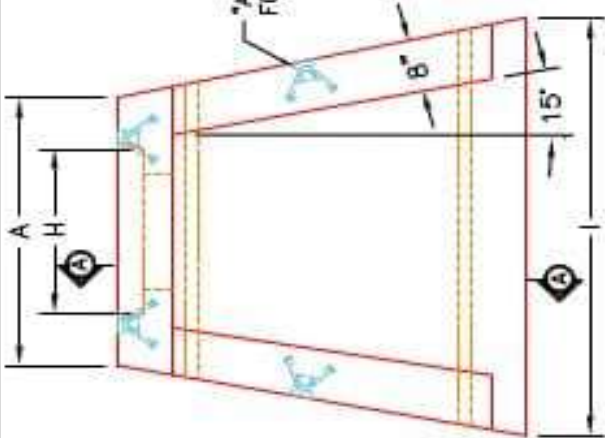


18" TO 20" STEPPED HOLE FORMER FOR 18" PIPE. 18" TO BE FLUSH WITH FLOOR.

FRONT ELEVATION



\*A-ANCHOR\* LIFTING SYSTEM FOR PLANT & FIELD HANDLING.



PLAN VIEW

**NOTES:**

1. CONCRETE: 4500 PSI @ 28 DAYS
2. REINFORCING: #4 BAR @ 12" C/C E-W-GRADE 60, (WITH 2" CONCRETE COVER MINIMUM)
3. REINFORCING BARS TO BE TACK WELDED OR TIED.
4. DRAWING TO BE USED IN CONJUNCTION WITH KYTC STD. DRAWING RDH-000-03 AND THE STANDARD SPECIFICATIONS FOR ROAD AND BRIDGE CONSTRUCTION.
5. CHAMFER ON ALL EXPOSED EDGES.

**PRODUCTION WORK ORDER**

- QUALITY CONTROL CHECKLIST
- ALL DIMENSIONS CORRECT.
  - LIFTERS INSTALLED.
  - STEPPED HF CORRECT SIZE.
  - REINFORCING CORRECT.
  - DISSIPATOR BLOCK INSTALLED.
  - EDGES CHAMFERED.
  - ALL PATCHWORK ACCEPTABLE.



DESCRIPTION: KYTC 18" SLOPED & FLARED HEADWALL
CUSTOMER: STOCK
PROJECT: STOCK INVENTORY
STRUCTURE ID.: N/A
QUOTE/SALES ORDER NO: N/A
CHECK: JH. ROSS, PE
DATE: REV. 4/22/24
SCALE: NTS
PG. 1 of 1

PRODUCT I.D.: HWSF18	PRODUCT VIEW: RIGHT SIDE UP
PLANT: BEAVER DAM, KY.	WEIGHT: 3,640 LBS.
TOP SECTION JOINT: N/A	BASE SECTION JOINT: N/A
QC CHECK INITIALS:	