



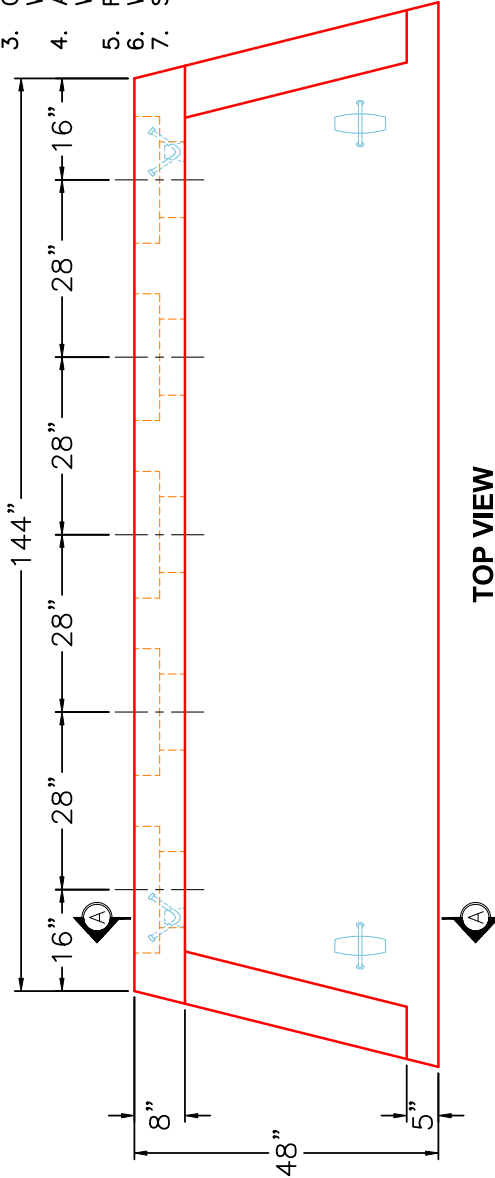
Structure ID: 17-54255 (2)

P1 HWCUSTOM

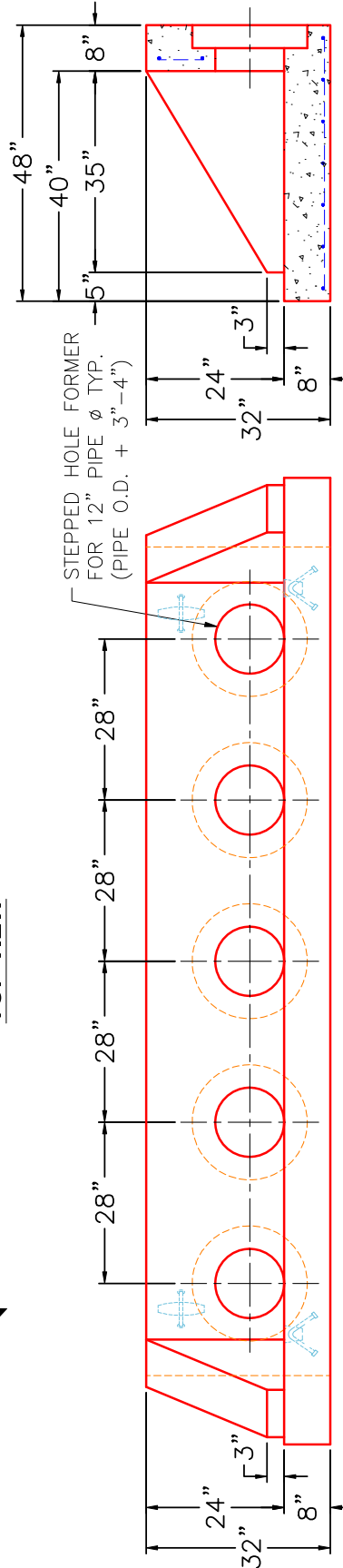
12" - CUSTOM S&F HEADWALL (5X 12" PIPES) F/F

GENERAL NOTES:

1. THE FOLLOWING STANDARD SPECIFICATIONS APPLY:
 - REINFORCING-811.02, STRUCTURE-710.03.01
 - TACK WELDING-605.03.04
2. MINIMUM 2" CONCRETE COVER ON REBAR.
3. CONCRETE-4500 PSI @ 28 DAYS.
4. WITH AIR ENTRAINMENT.
5. ALL PICK UP POINTS GROUTED BY CONTRACTOR.
6. WITH STACK APPROVED NON-SHRINK GROUT.
7. REINFORCING: #5 @ 12" C/C E.W. TYPICAL.
8. WEIGHT: 7,654 LBS.
9. STRUCTURE ID IS PIPE INVERT ELEVATION.



TOP VIEW



FRONT VIEW

SECTION A-A

SUBMITTAL DRAWING: CUSTOM 12" S&F HEADWALL	
CUSTOMER: J&J EXCAVATING	
PROJECT: DAWSON SPRINGS CITY PARK PH 2	
STRUCTURE: 17-54255 (2)	
QUOTE/SALES ORDER NO: 25-4255	
PC: E. BRADLEY	DRAWN BY: J. COPPAGE
DATE: 11/12/25	SCALE: NTS
	PG. 1 of 1



REVISION INFORMATION

REV.	DATE:	NO REVISIONS TO DATE