

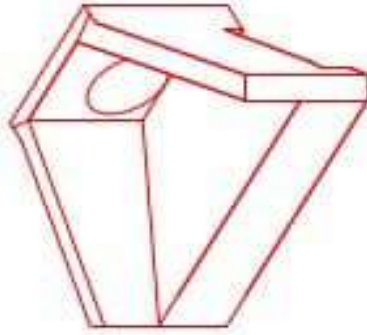


Structure ID: 14-54255 (2)

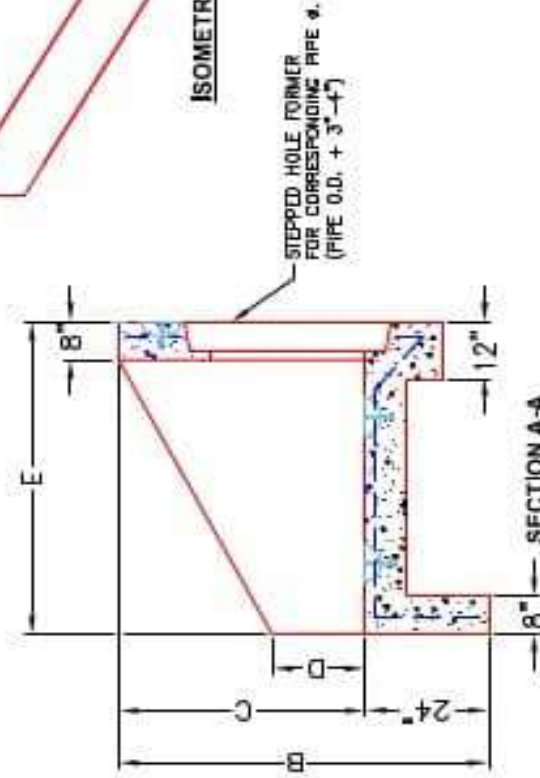
P1 HWPC48

48" - PIPE CULVERT HEADWALL F/F

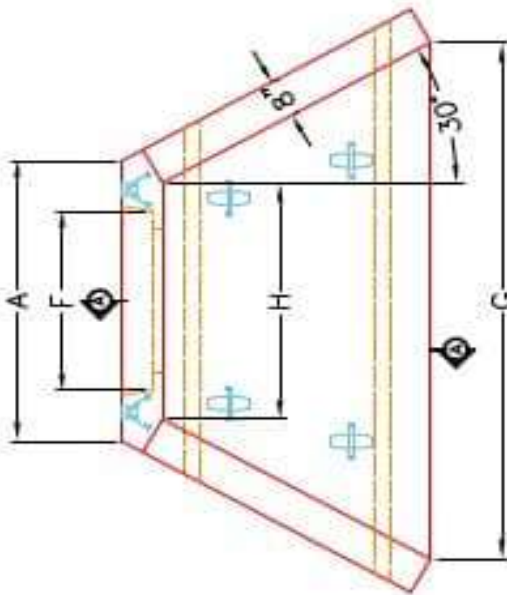
DIMENSIONS									
PIE #	A	B	C	D	E	F	G	H	WEIGHT
3'	1'-4"	6'-9"	1'-4"	1'-4"	5'-0"	1'-6"	1'-8"	3'-4"	1420 lbs.
3'	1'-4"	6'-9"	1'-4"	1'-4"	5'-0"	1'-6"	1'-8"	3'-4"	1420 lbs.
4'	6'-7"	6'-7"	5'-3"	2'-4"	6'-3"	6'-4"	11'-8"	1'-11"	1123 lbs.
4'	6'-7"	6'-7"	5'-3"	2'-4"	6'-3"	5'-2"	11'-8"	1'-11"	1123 lbs.
5'	7'-4"	7'-4"	6'-4"	2'-4"	7'-4"	5'-3"	10'-8"	6'-0"	842 lbs.
6'	7'-4"	7'-4"	6'-4"	2'-4"	7'-4"	5'-3"	10'-8"	6'-0"	842 lbs.



ISOMETRIC VIEW

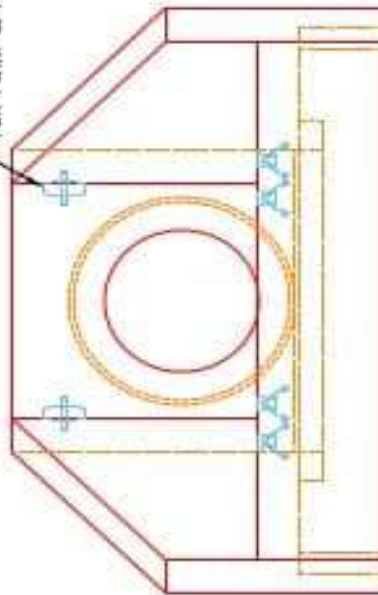


SECTION A-A



PLAN VIEW

"A"-ANCHOR LIFTING SYSTEM FOR PLANT & FIELD HANDLING.



FRONT ELEVATION

NOTES:

1. CONCRETE: KYTC APPROVED.
2. REINFORCING: #5 BAR @ 12" C/C E.W.-GRADE 60, (WITH 2" CONCRETE COVER MINIMUM)
3. REINFORCING BARS TO BE TACK WELDED OR TIED.
4. PIPE AND LIFTING ANCHOR POCKETS TO BE GROUTED WITH KYTC APPROVED NON-SHRINK GROUT.
5. DRAWING TO BE USED IN CONJUNCTION WITH KYTC STD. DRAWING RDH-110-02, RDH-210-03 AND THE STANDARD SPECIFICATIONS FOR ROAD AND BRIDGE CONSTRUCTION.
6. 3/8" CHAMFER ON ALL EXPOSED EDGES.
7. PREFORMED STEPPED HOLE SIZED AS PER O.D. OF PIPE + 3"-4".

APPROVED FOR DESIGN ONLY

APPROVED
 AS PER SPECIFICATION 1012
 KYTC DIV. OF CONSTRUCTION
 INSTRUCTION
 1/20/2021 9:50 AM



INFRASTRUCTURE PRECAST, INC.
 801 WEST 7TH ST., BEAVER DAM, KY, 40009
 PHONE: 502-338-2266, FAX: 502-338-2681
 KYTC 30"-60" PIPE CULVERT HEADWALL
 DRAWING NO: KYTC PC-118 DATE: 12-14-20
 ISSUED BY: J.H. DAVIS, PE DRAWN BY: N. RUSSELL
 WEB: WWW.ICAST.COM SCALE: 4/8