

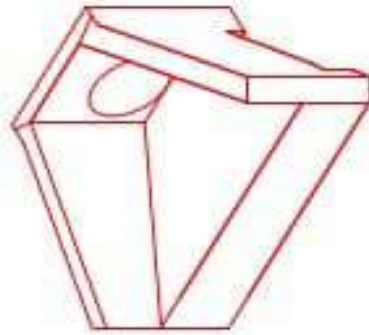


**Structure ID: 14-54255 (1)**

**P1 HWPC48**

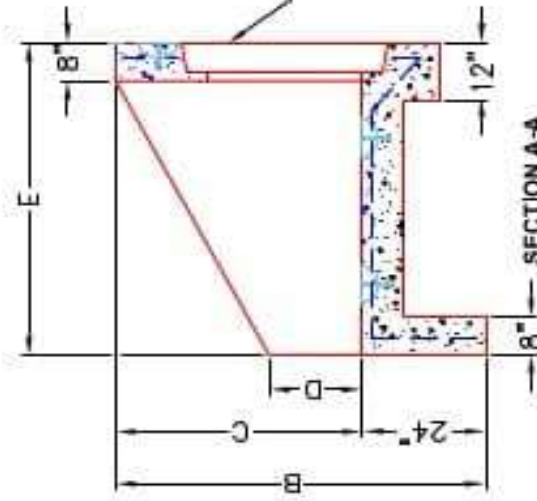
**48" - PIPE CULVERT HEADWALL F/F**

DIMENSIONS									
PIE #	A	B	C	D	E	F	G	H	WEIGHT
3'	1'-4"	6'-4"	1'-4"	1'-4"	5'-0"	1'-6"	1'-8"	3'-4"	1420 lbs.
3'	1'-4"	6'-4"	1'-4"	1'-4"	5'-0"	1'-6"	1'-8"	3'-4"	1420 lbs.
4'	6'-4"	6'-4"	5'-4"	2'-4"	6'-4"	6'-4"	11'-8"	11'-8"	1123 lbs.
4'	6'-4"	6'-4"	5'-4"	2'-4"	6'-4"	5'-4"	11'-8"	11'-8"	1123 lbs.
5'	7'-4"	7'-4"	6'-4"	2'-4"	7'-4"	5'-4"	12'-8"	12'-8"	1412 lbs.
6'	7'-4"	7'-4"	6'-4"	2'-4"	7'-4"	5'-4"	12'-8"	12'-8"	1412 lbs.

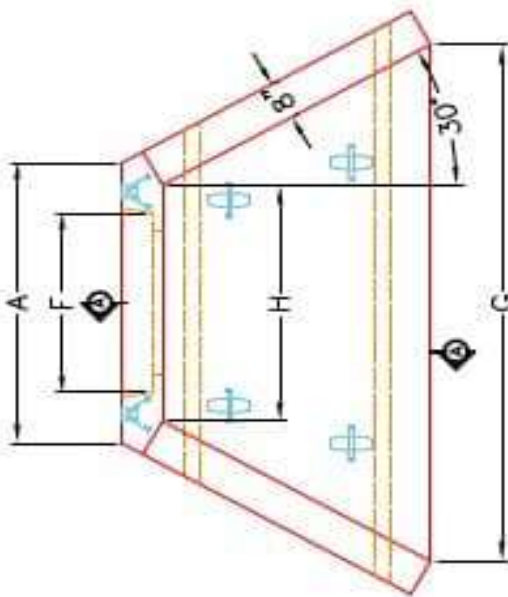


ISOMETRIC VIEW

STEPPED HOLE FORMER FOR CORRESPONDING PIPE Ø.  
 (PIPE O.D. + 3" - 4")

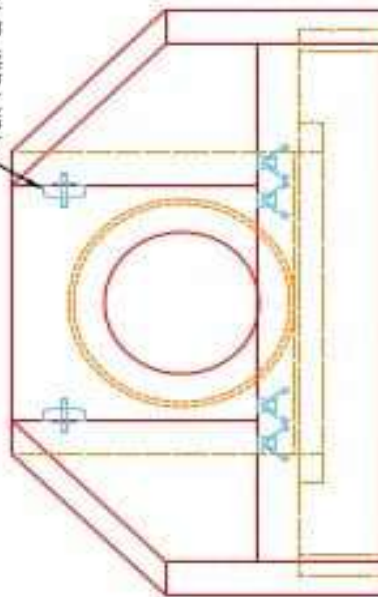


SECTION A-A



PLAN VIEW

"A"-ANCHOR LIFTING SYSTEM FOR PLANT & FIELD HANDLING.



FRONT ELEVATION

**NOTES:**

1. CONCRETE: KYTC APPROVED.
2. REINFORCING: #5 BAR @ 12" C/C E.W.-GRADE 60, (WITH 2" CONCRETE COVER MINIMUM)
3. REINFORCING BARS TO BE TACK WELDED OR TIED.
4. PIPE AND LIFTING ANCHOR POCKETS TO BE GROUTED WITH KYTC APPROVED NON-SHRINK GROUT.
5. DRAWING TO BE USED IN CONJUNCTION WITH KYTC STD. DRAWING RDH-110-02, RDH-210-03 AND THE STANDARD SPECIFICATIONS FOR ROAD AND BRIDGE CONSTRUCTION.
6. 3/8" CHAMFER ON ALL EXPOSED EDGES.
7. PREFORMED STEPPED HOLE SIZED AS PER O.D. OF PIPE + 3" - 4".

APPROVED FOR DESIGN ONLY

APPROVED  
 AS PER SPECIFICATION 1012  
 KYTC DIV. OF CONSTRUCTION  
 INSTRUCTION  
 1/20/2021 9:50 AM



INFRASTRUCTURE PRECAST, INC.  
 801 WEST 7TH ST., BEAVER DAM, KY, 40009  
 PHONE: 502-338-2266, FAX: 502-338-2681  
 KYTC 30"-60" PIPE CULVERT HEADWALL  
 DRAWING NO: KYTC PC-118 DATE: 12-14-20  
 ISSUED BY: J.H. DAVIS, PE DRAWN BY: N. RUSSELL  
 WEB: WWW.ICAST.COM SCALE: 4/8