

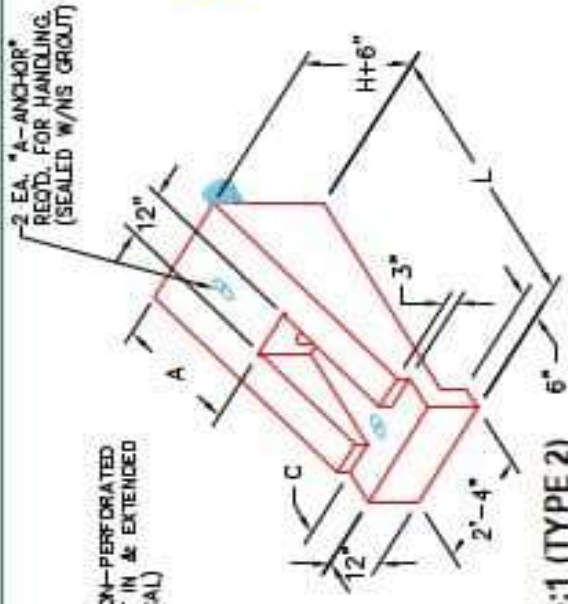
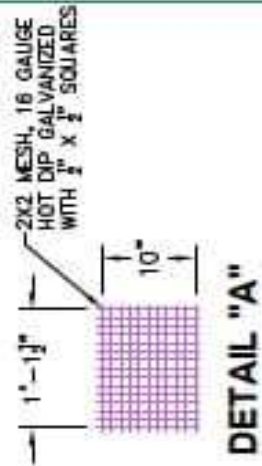


Structure ID: 13-54255 (4)

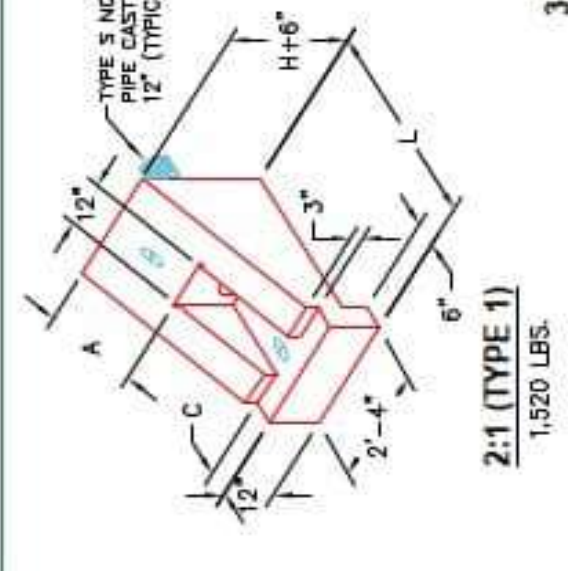
P1 HWPP616TY4

6" - HW Perforated Pipe Type 4 (6 to 1) F/F

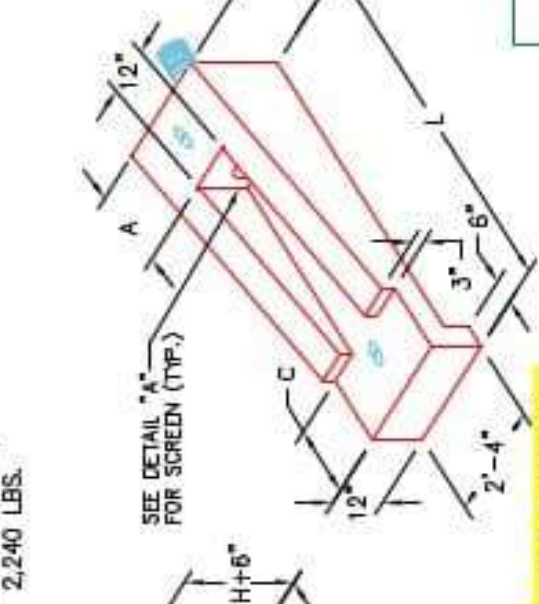
PIPE DIA.	SLOPE	DIMENSIONS				CLASS "A" CONCRETE	DLL YDS.
		L	H	A	C		
4"	2:1	3'-4 1/8"	1'-5"	6"	6"	0.38	
	3:1	5'-1 1/8"	1'-0 1/8"	2'-3"	9"	0.56	
6"	4:1	8'-2 3/4"	1'-0"	3'-0"	1'-0"	0.74	
	6:1	11'-2 3/4"	1'-5"	1'-5"	1'-5"	0.82	
8"	2:1	3'-2 1/2"	1'-5"	6"	6"	0.43	
	3:1	5'-0 1/4"	1'-0 3/4"	2'-3"	9"	0.63	
	4:1	7'-1"	1'-10 3/4"	3'-0"	1'-0"	0.83	
10"	2:1	8'-4 1/2"	1'-4 3/4"	1'-4 3/4"	1'-8"	0.73	
	3:1	11'-4 3/4"	2'-1"	2'-1"	9"	0.69	
	4:1	14'-4 3/4"	2'-4"	3'-0"	1'-0"	0.91	
12"	6:1	19'-6"	1'-7"	1'-7"	1'-5"	0.83	



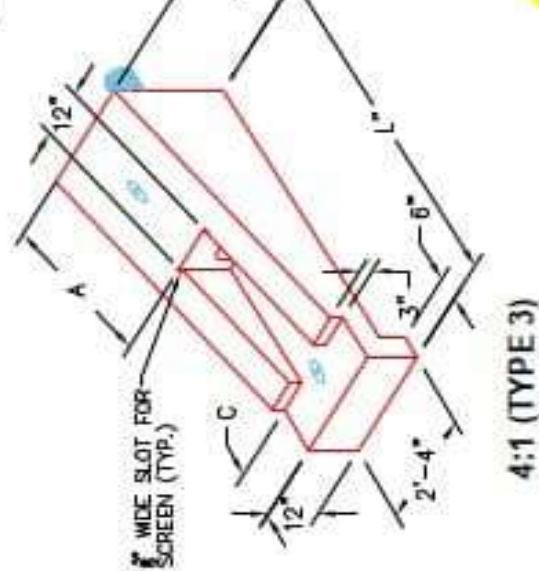
2:1 (TYPE 1)
1,520 LBS.



3:1 (TYPE 2)
2,240 LBS.



4:1 (TYPE 3)
2,960 LBS.



6:1 (TYPE 4)
2,480 LBS.

APPROVED FOR DESIGN ONLY



DIVISION OF CONSTRUCTION



INFRASTRUCTURE PRECAST, INC.
 981 WEST 7TH ST., BEAVER DAM, KY, 42309
 PHONE: (270) 363-2338, FAX: (270) 368-7484

KYTC PERFORATED PIPE HEADWALLS

DESIGNED BY: J.J. WOOD, P.E. DATE: 12-07-21
 REVIEWED BY: J.J. WOOD, P.E. DRAWN BY: H. RECHMS
 WEB: WWW.ICAST.COM SCALE: NTS

NOTES:

1. CONCRETE: KYTC APPROVED.
2. REINFORCING: #4 BAR @ 12" C/C E.W. - GRADE 60, (WITH 2" CONCRETE COVER MINIMUM)
3. REINFORCING BARS TO BE TACK WELDED OR TIED.
4. PIPE AND LIFTING ANCHOR POCKETS TO BE GROUTED WITH KYTC APPROVED NON-SHRINK GROUT.
5. DRAWING TO BE USED IN CONJUNCTION WITH KYTC STD. DRAWING RDP-010-09 AND THE STANDARD SPECIFICATIONS FOR ROAD AND BRIDGE CONSTRUCTION.
6. CHAMFER ON ALL EXPOSED EDGES.