

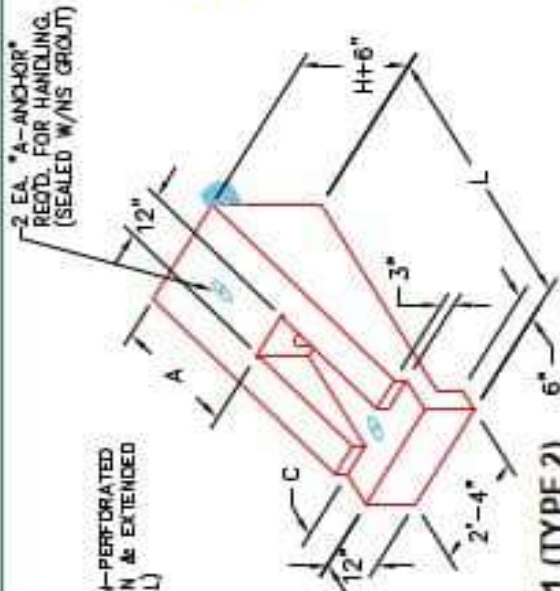
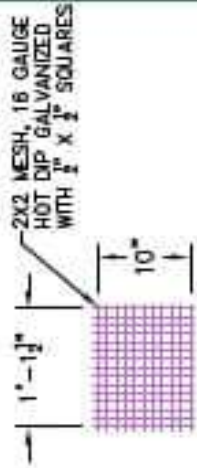


**Structure ID: 12-54255 (5)**

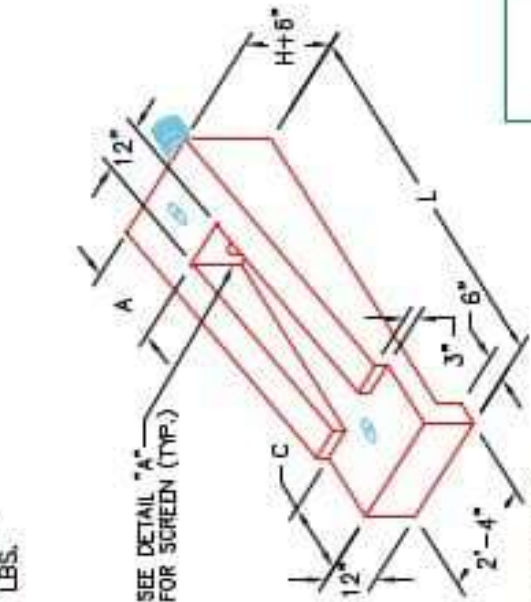
**P1 HWPP614ST3**

**6" - HW Perforated Pipe Type 3 (4 to1) F/F**

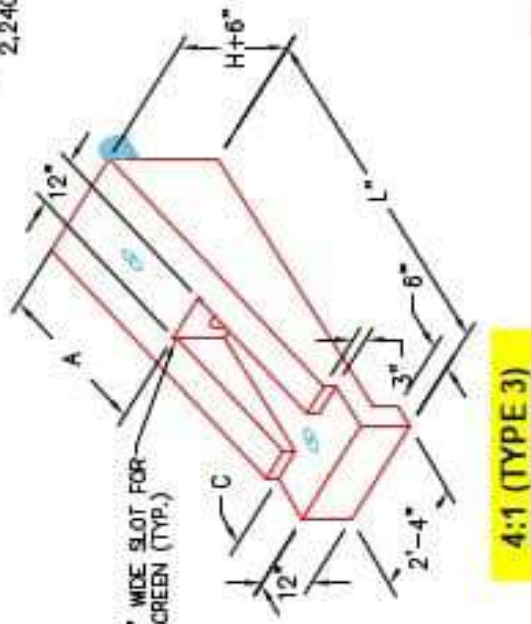
PIPE DIA.	SLOPE	DIMENSIONS			CLASS "A" CONCRETE	
		L	H	A	C	CU. YDS.
4"	2:1	3'-0 1/4"	1'-5"	8"	8"	0.38
AND	3:1	5'-1 1/8"	1'-0 1/4"	2'-3"	9"	0.56
6"	4:1	6'-9 3/4"	3'-0"	1'-0"	1'-0"	0.74
	6:1	7'-2 1/2"	1'-5"	1'-5"	1'-5"	0.82
	2:1	3'-9 1/2"	1'-5"	8"	8"	0.43
	3:1	5'-8 1/4"	1'-10 1/4"	2'-3"	9"	0.53
	4:1	7'-7"	3'-0"	3'-0"	1'-0"	0.83
	6:1	8'-4 1/2"	1'-4 1/4"	1'-5"	1'-5"	0.73
	2:1	4'-3"	1'-5"	6"	6"	0.47
10"	3:1	6'-3"	2'-1"	2'-3"	9"	0.68
	4:1	8'-4"	3'-0"	3'-0"	1'-0"	0.91
	6:1	9'-6"	1'-7"	1'-5"	1'-5"	0.83



**2:1 (TYPE 1)**  
1,520 LBS.



**3:1 (TYPE 2)**  
2,240 LBS.



**4:1 (TYPE 3)**  
2,960 LBS.

**6:1 (TYPE 4)**  
2,480 LBS.

**NOTES:**

1. CONCRETE: KYTC APPROVED.
2. REINFORCING: #4 BAR @ 12" C/C E.W. - GRADE 60, (WITH 2" CONCRETE COVER MINIMUM)
3. REINFORCING BARS TO BE TACK WELDED OR TIED.
4. PIPE AND LIFTING ANCHOR POCKETS TO BE GROUTED WITH KYTC APPROVED NON-SHRINK GROUT.
5. DRAWING TO BE USED IN CONJUNCTION WITH KYTC STD. DRAWING RDP-010-09 AND THE STANDARD SPECIFICATIONS FOR ROAD AND BRIDGE CONSTRUCTION.
6. CHAMFER ON ALL EXPOSED EDGES.

APPROVED FOR DESIGN ONLY

Approved by: *[Signature]*  
 619 399-6666

DIVISION OF CONSTRUCTION

INFRASTRUCTURE PRECAST, INC.  
 851 WEST 7TH ST, BOONVILLE, KY 40309  
 PHONE (606) 363-2538, FAX (606) 368-7454

KYTC PERFORATED PIPE HEADWALLS

DRAWING NO. HWPP-10-118 DATE: 12-07-21  
 REVISIONS BY: J.J. BRADLEY, P.E. DRAWN BY: J.J. BRADLEY  
 WEB: WWW.ICAST.COM SCALE: N/A