



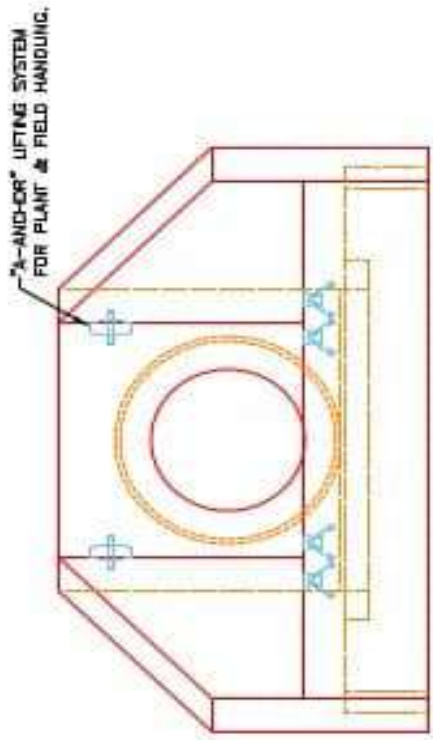
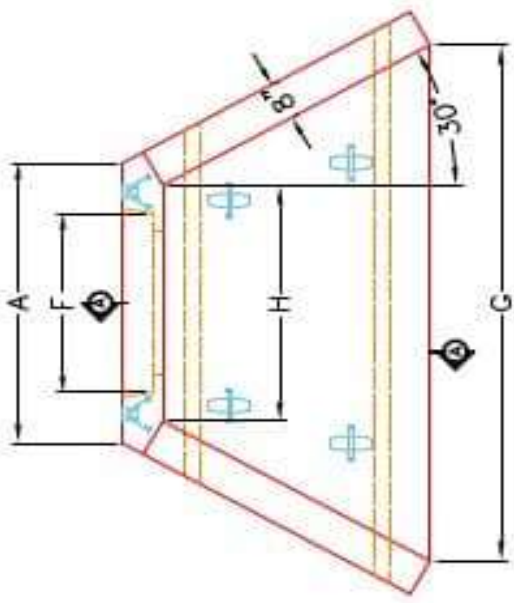
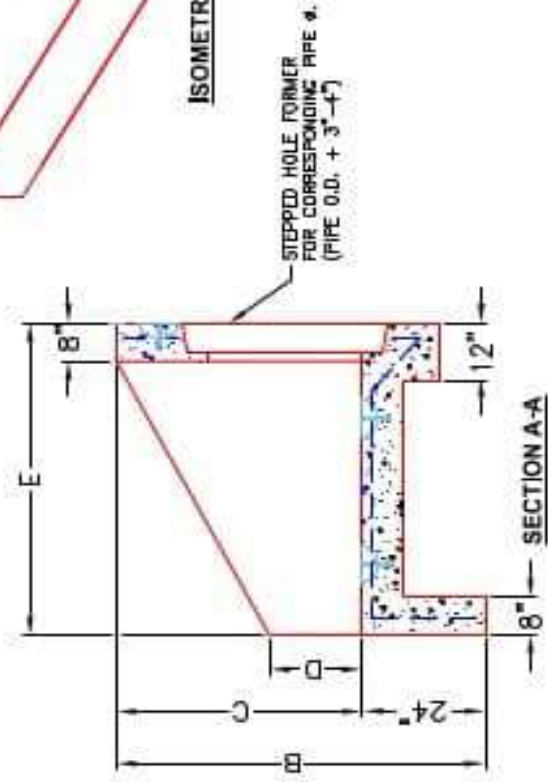
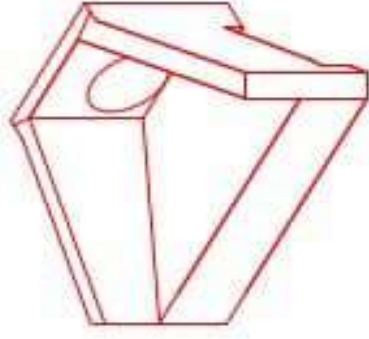
**Structure ID: 7-54245 1**

**P1 HWPC36**

**36" - PIPE CULVERT HEADWALL F/F**

**DIMENSIONS**

PIPE #	A	B	C	D	E	F	G	H	WEIGHT
36"	1'-0"	6'-0"	1'-0"	1'-0"	5'-0"	1'-0"	1'-0"	3'-0"	1400 lbs.
48"	1'-0"	6'-0"	1'-0"	1'-0"	5'-0"	1'-0"	1'-0"	3'-0"	1600 lbs.
60"	1'-0"	6'-0"	1'-0"	1'-0"	5'-0"	1'-0"	1'-0"	3'-0"	1800 lbs.
72"	1'-0"	6'-0"	1'-0"	1'-0"	5'-0"	1'-0"	1'-0"	3'-0"	2000 lbs.
84"	1'-0"	6'-0"	1'-0"	1'-0"	5'-0"	1'-0"	1'-0"	3'-0"	2200 lbs.
96"	1'-0"	6'-0"	1'-0"	1'-0"	5'-0"	1'-0"	1'-0"	3'-0"	2400 lbs.



**APPROVED FOR DESIGN ONLY**

**APPROVED**  
 1/20/2021 9:50 AM  
 KYTC DIV. OF CONSTRUCTION

**INSTRUCTION**

**INFRASTRUCTURE PRECAST, INC.**  
 601 WEST 7TH ST., MANASSAS, VA 20108  
 PHONE: (703) 336-2266, FAX: (703) 336-1811

KYTC 30" - 84" PIPE CULVERT HEADWALL

DRAWING NO.: RTH-110-02 DATE: 12-14-20  
 REVISION: BY: J.H. HORSLEY, DC DRAWN BY: H. RICHARDS  
 WEB: WWW.ICAST.COM SCALE: 1/8"

- NOTES:**
1. CONCRETE: KYTC APPROVED.
  2. REINFORCING: #5 BAR @ 12" C/C E.W. - GRADE 60, (WITH 2" CONCRETE COVER MINIMUM)
  3. REINFORCING BARS TO BE TACK WELDED OR TIED.
  4. PIPE AND LIFTING ANCHOR POCKETS TO BE GROUTED WITH KYTC APPROVED NON-SHRINK GROUT.
  5. DRAWING TO BE USED IN CONJUNCTION WITH KYTC STD. DRAWING RDH-110-02, RDH-210-03 AND THE STANDARD SPECIFICATIONS FOR ROAD AND BRIDGE CONSTRUCTION.
  6. 3" CHAMFER ON ALL EXPOSED EDGES.
  7. PREFORMED STEPPED HOLE SIZED AS PER O.D. OF PIPE + 3" - 4".