

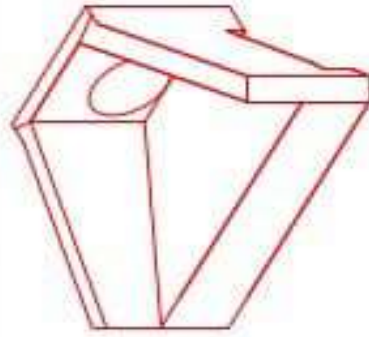


**Structure ID: 6-54245 2**

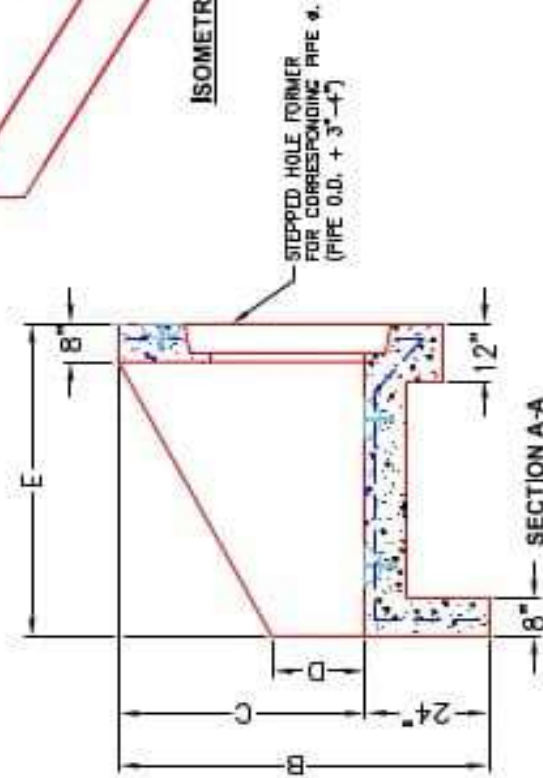
**P1 HWPC30**

**30" - PIPE CULVERT HEADWALL F/F**

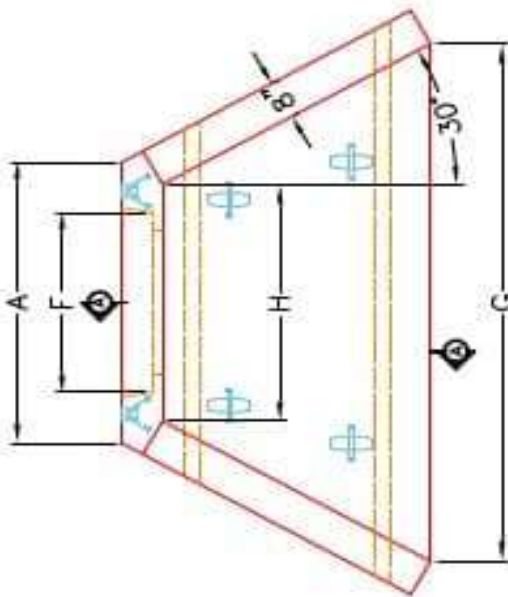
PRE #	A	B	C	D	E	F	G	H	WEIGHT
30'	1'-0"	6'-0"	1'-0"	1'-0"	5'-0"	3'-0"	1'-0"	3'-0"	1400 lbs.
36'	1'-0"	6'-0"	1'-0"	1'-0"	5'-0"	3'-0"	1'-0"	3'-0"	1400 lbs.
42'	6'-0"	6'-0"	5'-0"	2'-0"	6'-0"	6'-0"	11'-0"	1'-0"	11200 lbs.
48'	6'-0"	6'-0"	5'-0"	2'-0"	6'-0"	6'-0"	11'-0"	1'-0"	11200 lbs.
54'	7'-0"	7'-0"	6'-0"	2'-0"	7'-0"	7'-0"	12'-0"	6'-0"	14400 lbs.
60'	7'-0"	7'-0"	6'-0"	2'-0"	7'-0"	7'-0"	12'-0"	6'-0"	14400 lbs.



**ISOMETRIC VIEW**

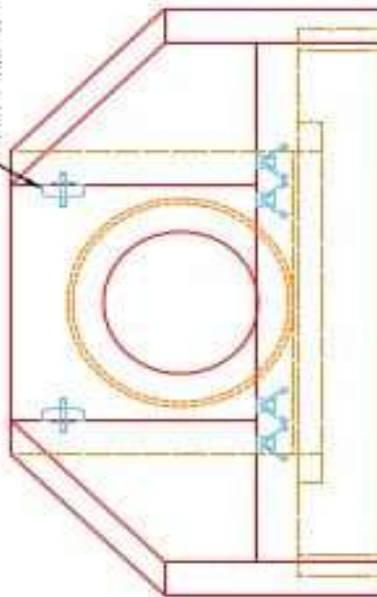


**SECTION A-A**



**PLAN VIEW**

3/4" ANCHOR LIFTING SYSTEM FOR PLANT & FIELD HANDLING.



**FRONT ELEVATION**

**NOTES:**

1. CONCRETE: KYTC APPROVED.
2. REINFORCING: #5 BAR @ 12" C/C E.W.-GRADE 60, (WITH 2" CONCRETE COVER MINIMUM)
3. REINFORCING BARS TO BE TACK WELDED OR TIED.
4. PIPE AND LIFTING ANCHOR POCKETS TO BE GROUTED WITH KYTC APPROVED NON-SHRINK GROUT.
5. DRAWING TO BE USED IN CONJUNCTION WITH KYTC STD. DRAWING RDH-110-02, RDH-210-03 AND THE STANDARD SPECIFICATIONS FOR ROAD AND BRIDGE CONSTRUCTION.
6. 3" CHAMFER ON ALL EXPOSED EDGES.
7. PREFORMED STEPPED HOLE SIZED AS PER O.D. OF PIPE + 3"-4".

APPROVED FOR DESIGN ONLY

**APPROVED**  
 AS PER SPECIFICATION 1013  
 KYTC DIV. OF CONSTRUCTION

BY: [Signature]  
 DATE: 1/20/2021 9:50 AM  
 INSTRUCTION

**INFRASTRUCTURE PRECAST, INC.**  
 801 WEST 7TH ST., MARION KY, 40350  
 PHONE: 606-393-2266, FAX: 606-393-2681

KYTC 30"-60" PPE CULVERT HEADWALL

DRAWING NO.: KYTC PC-118  
 REVISION NO.: 14, 2006, 15  
 DRAWN BY: N. RUSSELL  
 WWW.ICAST.COM  
 SCALE: 4/8"