



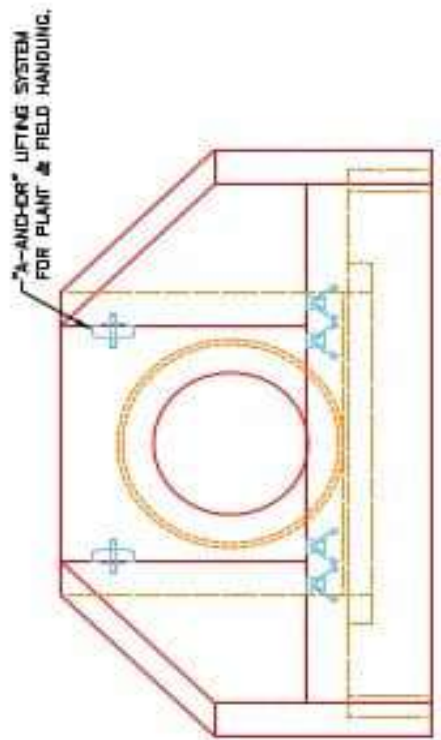
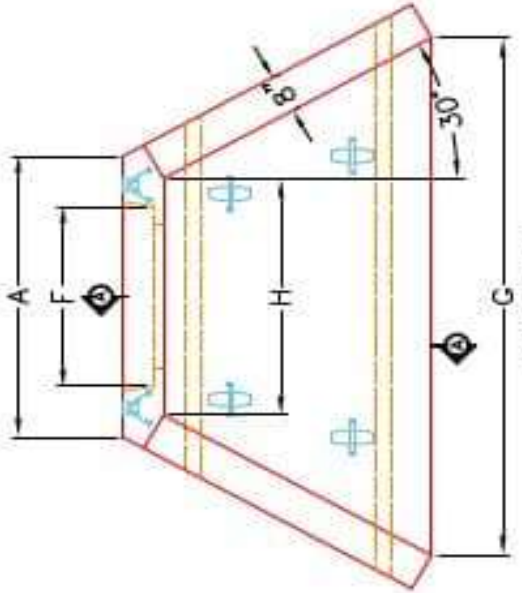
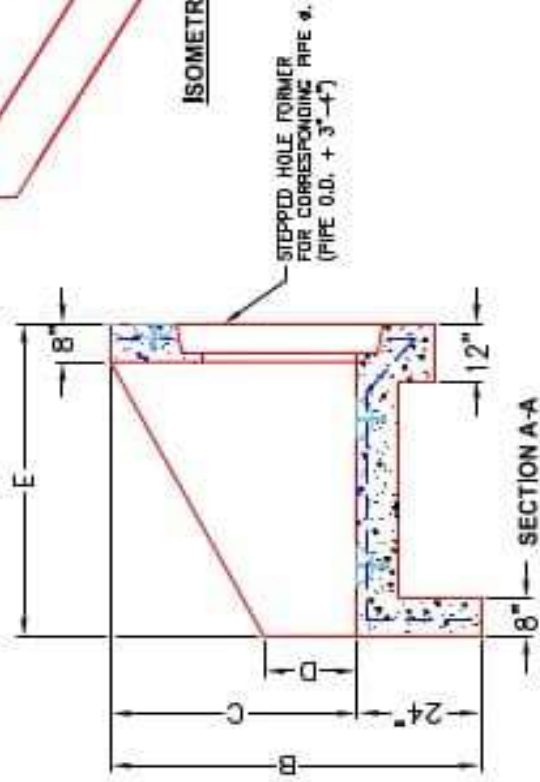
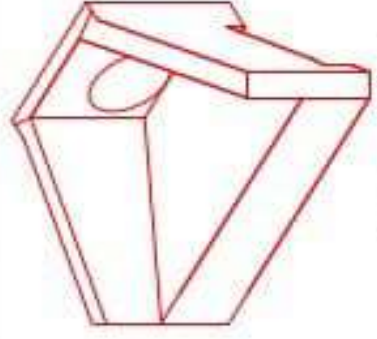
Structure ID: 6-54245 2

P1 HWPC30

30" - PIPE CULVERT HEADWALL F/F

DIMENSIONS

PRE #	A	B	C	D	E	F	G	H	WEIGHT
30"	1'-4"	6'-4"	1'-4"	1'-4"	5'-0"	3'-6"	1'-0"	3'-4"	1400 lbs.
36"	1'-4"	6'-4"	1'-4"	1'-4"	5'-0"	4'-0"	1'-0"	3'-4"	1400 lbs.
42"	6'-4"	6'-4"	5'-4"	2'-4"	6'-4"	4'-4"	1'-0"	1'-10"	1420 lbs.
48"	6'-4"	6'-4"	5'-4"	2'-4"	6'-4"	5'-4"	1'-0"	1'-10"	1420 lbs.
54"	7'-4"	7'-4"	6'-4"	2'-4"	7'-4"	5'-4"	0'-0"	6'-0"	1442 lbs.
60"	7'-4"	7'-4"	6'-4"	2'-4"	7'-4"	6'-4"	0'-0"	6'-0"	1442 lbs.



APPROVED FOR DESIGN ONLY

APPROVED

AS PER SPECIFICATION 1013

DATE: 1/20/2021 9:50 AM

BY: [Signature]

KYTC DIV. OF CONSTRUCTION

INSTRUCTION

INFRASTRUCTURE PRECAST, INC.
 801 WEST 7TH ST., MARION KY, 40350
 PHONE: 606-338-2266, FAX: 606-338-2688

KYTC 30" - 60" PPE CULVERT HEADWALL	
ISSUED BY: KYTC PC-101	DATE: 12-14-20
DESIGNED BY: J.H. DAVIS, PE	DRAWN BY: N. RUSSELL
REV: 000000000000000000	SCALE: 4/8

- NOTES:**
1. CONCRETE: KYTC APPROVED.
 2. REINFORCING: #5 BAR @ 12" C/C E.W.-GRADE 60, (WITH 2" CONCRETE COVER MINIMUM)
 3. REINFORCING BARS TO BE TACK WELDED OR TIED.
 4. PIPE AND LIFTING ANCHOR POCKETS TO BE GROUTED WITH KYTC APPROVED NON-SHRINK GROUT.
 5. DRAWING TO BE USED IN CONJUNCTION WITH KYTC STD. DRAWING RDH-110-02, RDH-210-03 AND THE STANDARD SPECIFICATIONS FOR ROAD AND BRIDGE CONSTRUCTION.
 6. 3" CHAMFER ON ALL EXPOSED EDGES.
 7. PREFORMED STEPPED HOLE SIZED AS PER O.D. OF PIPE + 3"-4".