

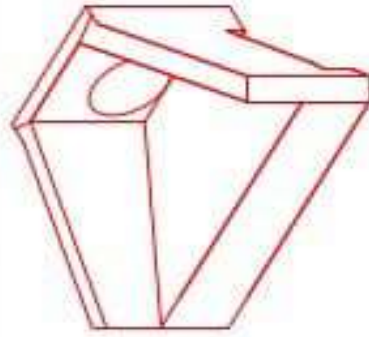


Structure ID: 6-54245 1

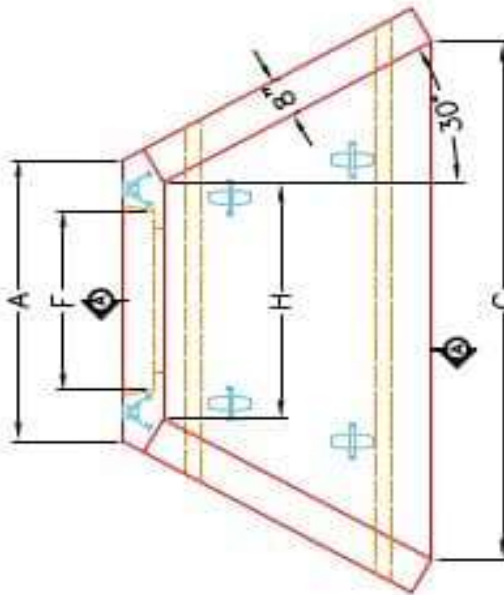
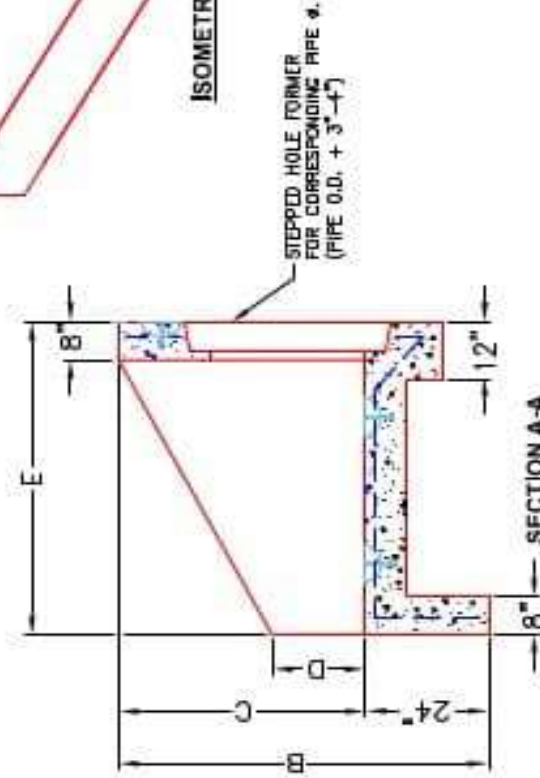
P1 HWPC30

30" - PIPE CULVERT HEADWALL F/F

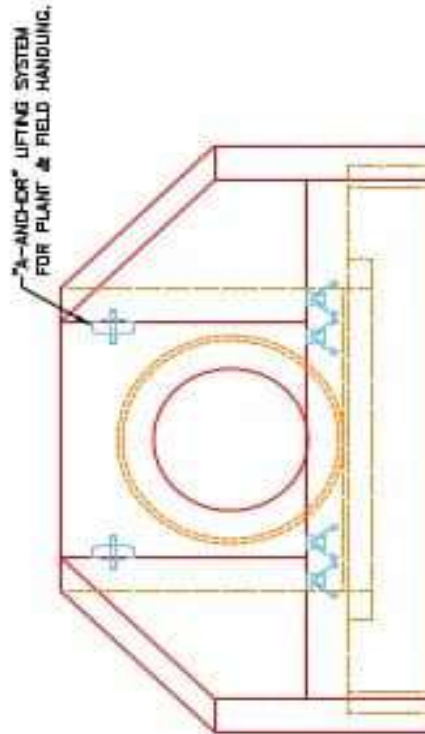
PRE #	A	B	C	D	E	F	G	H	WEIGHT
30'	1'-0"	6'-0"	1'-0"	1'-0"	5'-0"	3'-0"	1'-0"	3'-0"	1400 lbs.
36'	1'-0"	6'-0"	1'-0"	1'-0"	5'-0"	3'-0"	1'-0"	3'-0"	1400 lbs.
42'	6'-0"	6'-0"	5'-0"	2'-0"	6'-0"	6'-0"	11'-0"	1'-0"	1420 lbs.
48'	6'-0"	6'-0"	5'-0"	2'-0"	6'-0"	6'-0"	11'-0"	1'-0"	1420 lbs.
54'	7'-0"	7'-0"	6'-0"	2'-0"	7'-0"	5'-0"	10'-0"	6'-0"	1442 lbs.
60'	7'-0"	7'-0"	6'-0"	2'-0"	7'-0"	5'-0"	10'-0"	6'-0"	1442 lbs.



ISOMETRIC VIEW



PLAN VIEW



FRONT ELEVATION

NOTES:

1. CONCRETE: KYTC APPROVED.
2. REINFORCING: #5 BAR @ 12" C/C E.W.-GRADE 60, (WITH 2" CONCRETE COVER MINIMUM)
3. REINFORCING BARS TO BE TACK WELDED OR TIED.
4. PIPE AND LIFTING ANCHOR POCKETS TO BE GROUTED WITH KYTC APPROVED NON-SHRINK GROUT.
5. DRAWING TO BE USED IN CONJUNCTION WITH KYTC STD. DRAWING RDH-110-02, RDH-210-03 AND THE STANDARD SPECIFICATIONS FOR ROAD AND BRIDGE CONSTRUCTION.
6. 3" CHAMFER ON ALL EXPOSED EDGES.
7. PREFORMED STEPPED HOLE SIZED AS PER O.D. OF PIPE + 3"-4".

APPROVED FOR DESIGN ONLY

APPROVED
 AS PER SPECIFICATION 1013
 KYTC DIV. OF CONSTRUCTION
 INSTRUCTION
 1/20/2021 9:50 AM



INFRASTRUCTURE PRECAST, INC.
 801 WEST 7TH ST., MARION KY, 40350
 PHONE: 606-393-2266, FAX: 606-393-2681
 KYTC 30"-60" PPE CULVERT HEADWALL
 DRAWING NO: KYTC PC-118 DATE: 12-14-20
 DESIGNED BY: J.H. DAVIS, PE DRAWN BY: N. RUSSELL
 WEB: WWW.ICAST.COM SCALE: 4/8