

Structure ID: 37

P1 BX4860-08W12FEBAVF

BX BASE w/FLANGE 08W/12F/08EF F/n

- P3) 24" - CASTING HEIGHT - 8"
- P2) 48" x 60" - CB FLAT TOP 8"W w/24"Hole F/F - 8"
- P1) 48" x 60" - BX BASE w/FLANGE 08W/12F/08EF F/n - 72"
- 1) SECONDARY POUR
- 1) CASTING - HOE KY-510 F/C (KY TY.2)
- 1) 48" x 60" - Conseal CS-102 1.00"
- 1) Hole - 54
- 1) Hole - 40
- 2) I-Beam Notch n/n - 7"x9"x5"
- 7) MH Step ML-10-TDS-NCR - 10"

0 lb
 2960 lb
 16929 lb
 0 lb
 510 lb
 0 lb
 0 lb
 0 lb
 0 lb
 0 lb
 0 lb
 0 lb
 Structure Total: 20399 lb

- Structure Notes:**
- ** KYTC STATE PROJECT **
 - 1. HOE KY-510 FRAME & COVER (KY TY 2) PROVIDED BY ICAST
 - 2. PER KYTC MANHOLE TYPE C / ASTM C-913 SPECS
 - 3. CONCRETE: 4,000 PSI AT 28 DAYS
 - 4. REINFORCEMENT: #5 BAR @ 12" C.C. E.W. (GRADE 60) - 2" MIN. REBAR CLEARANCE (TYP)
 - 5. NO INVERT CHANNEL
 - 6. STEPS AT 0 DEGREES
 - 7. WET STICK 24" X 36" #5 L-BARS SPACED @ 12" C.C. E.W. (GRADE 60) OUT OF FLOOR FOR WALL POUR TIE-IN (SEE L-BAR DETAIL)

FIRST POUR (FLOOR): 4,898 LBS
SECOND POUR (WALLS): 12,031 LBS

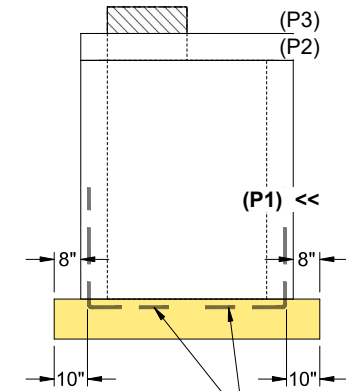
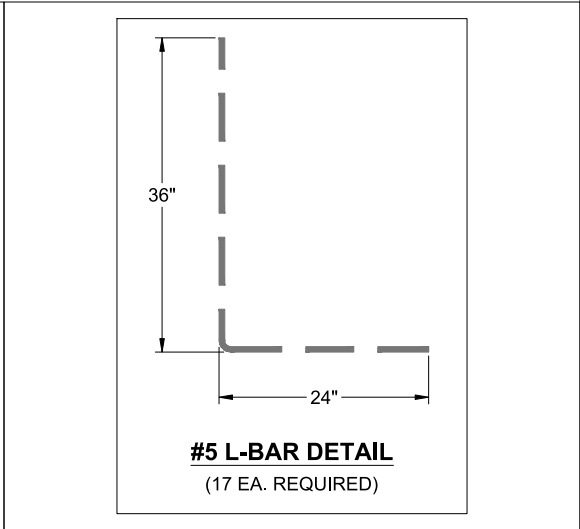
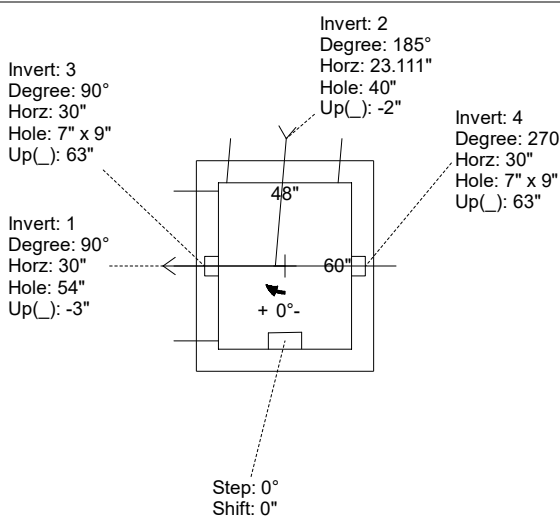
Rim: 822.33' Rim to Invert: 7.54' Slack: 2.48" Sump: 0" Step Position: 0°

Position	Elev	Angle	Ext. (cw)	Pipe	Pipe OD	Connector	Hole	Horz Size	Up ()	Offset
Invert 1	814.79'	90°	38"	48" CMP	49"	Hole 54	54"	54"	-3"	0"
Invert 2	814.79'	185°	31.811"	36" CMP	37"	Hole 40	40"	40.153"	-2"	-3.5"
Invert 3	820.41'	90°	38"	7" x 9" I-Beam Notch	7" x 9"	I-Beam Notch 7"x9"x5"	7" x 9"	7"	63"	0"
Invert 4	820.41'	270°	38"	7" x 9" I-Beam Notch	7" x 9"	I-Beam Notch 7"x9"x5"	7" x 9"	7"	63"	0"
Invert 5										
Invert 6										
Invert 7										
Invert 8										

FLOOR: 12"
WALLS: 8"

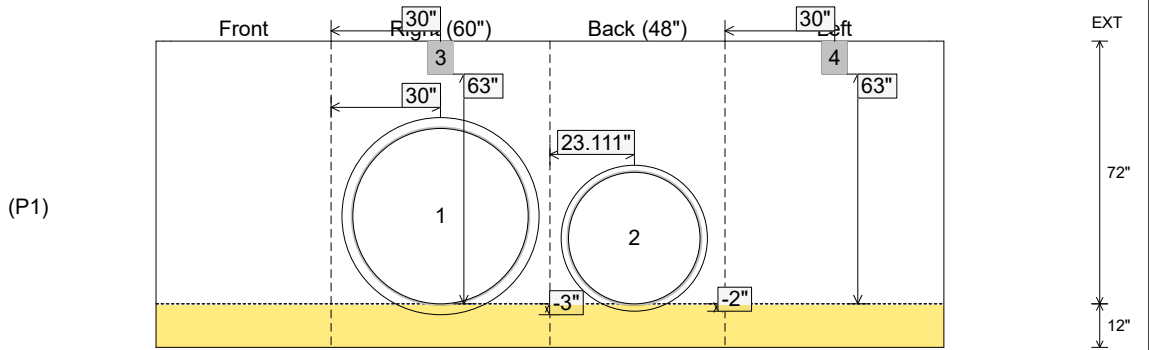
RIGHT-SIDE UP VIEW (int. dimensions)

UPSIDE-DOWN VIEW (int. dimensions)



WET STICK #5 L-BARS SPACED @ 12" C.C. (GRADE 60) OUT OF FLOOR FOR WALL POUR TIE-IN (SEE L-BAR DETAIL)

INSIDE WALL DIMENSIONS



Coating (Int): Coating (Ext):	Seam Up: Flat Seam Dn: n/a	Wall Thickness: 8" Floor Height: 12"	Height (Int): 72" Height (Ext): 84"	Weight (Net): 16929 lb Volume (Net): 4.32cu.yd
----------------------------------	-------------------------------	---	--	---

