

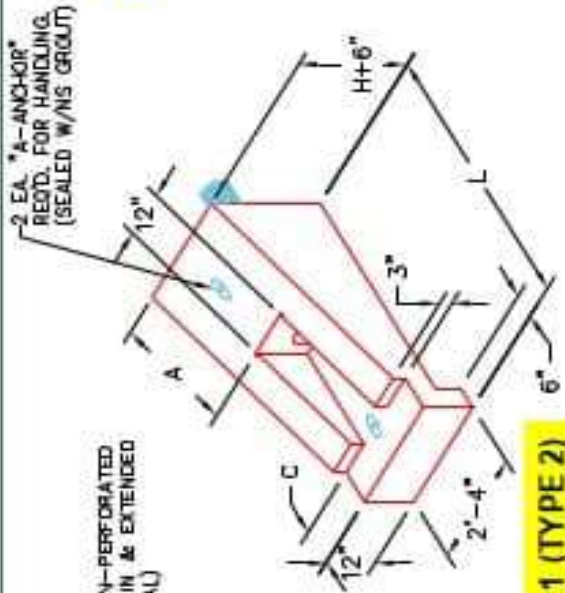
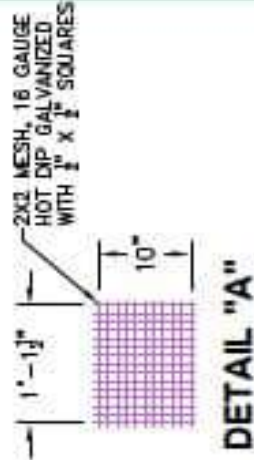


Structure ID: 3-54245 3

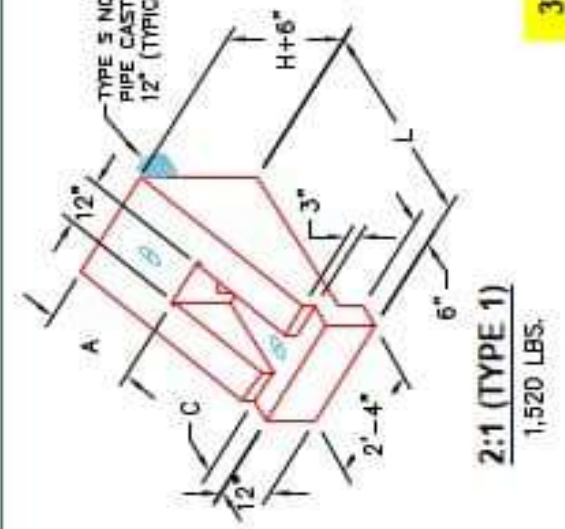
P1 HWPP314TY2

4" - HW Perforated Pipe Type 2 (3 to 1) F/F

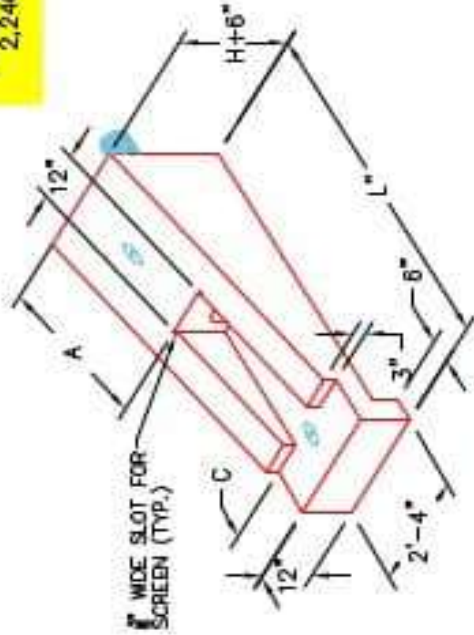
PIPE DIA.	SLOPE	DIMENSIONS				CLASS "A" CONCRETE	CU. YDS.
		L	H	A	C		
4"	2:1	3'-4 1/4"	1'-6"	1'-6"	6"	0.38	
	3:1	5'-1 1/4"	1'-0 1/4"	2'-3"	9"		0.56
5"	4:1	6'-0 3/4"	1'-6"	3'-0"	1'-0"	0.74	
6"	5:1	7'-2 3/4"	1'-6"	1'-6"	1'-6"	0.82	
	2:1	3'-9 1/2"	1'-6"	1'-6"	6"	0.43	
8"	3:1	5'-8 1/4"	1'-10 1/2"	2'-3"	9"	0.63	
	4:1	7'-2"	1'-10 1/2"	3'-0"	1'-0"	0.83	
10"	5:1	8'-4 1/2"	1'-4 1/4"	1'-6"	1'-0"	0.73	
	2:1	4'-2"	1'-6"	1'-6"	6"	0.47	
12"	3:1	6'-3"	2'-4"	2'-3"	9"	0.69	
	4:1	8'-4"	1'-6"	3'-0"	1'-0"	0.91	
14"	5:1	9'-6"	1'-6"	1'-6"	1'-6"	0.83	



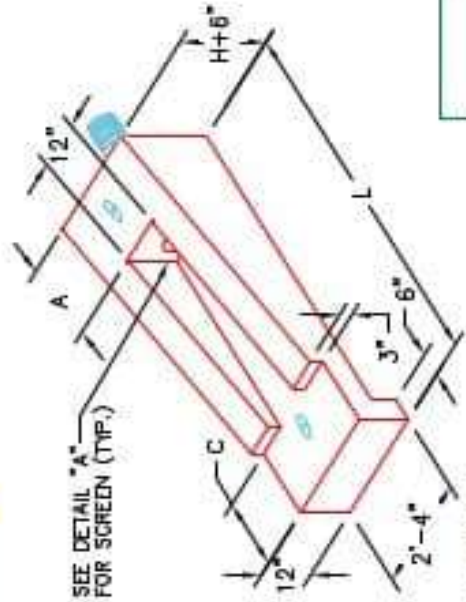
2:1 (TYPE 1)
1,520 LBS.



3:1 (TYPE 2)
2,240 LBS.



4:1 (TYPE 3)
2,960 LBS.



6:1 (TYPE 4)
2,480 LBS.

NOTES:

1. CONCRETE: KYTC APPROVED.
2. REINFORCING: #4 BAR @ 12" C/C E.W. - GRADE 60, (WITH 2" CONCRETE COVER MINIMUM)
3. REINFORCING BARS TO BE TACK WELDED OR TIED.
4. PIPE AND LIFTING ANCHOR POCKETS TO BE GROUTED WITH KYTC APPROVED NON-SHRINK GROUT.
5. DRAWING TO BE USED IN CONJUNCTION WITH KYTC STD. DRAWING RDP-010-09 AND THE STANDARD SPECIFICATIONS FOR ROAD AND BRIDGE CONSTRUCTION.
6. CHAMFER ON ALL EXPOSED EDGES.

APPROVED FOR DESIGN ONLY

Approved by: [Signature]

DIVISION OF CONSTRUCTION

INFRASTRUCTURE PRECAST, INC.
 181 WEST 7TH ST. ANSONIA, KY 42003
 PHONE (270) 363-0200, FAX (270) 368-7464

KYTC PERFORATED PIPE HEADWALLS

DRAWING NO.: KYTC P1-HW DATE: 12-07-21
 REVISION BY: J.H. HORSLEY, P.E. DRAWN BY: H. RICHARDS
 WEB: WWW.ICAST.COM SCALE: NTS