

Job Name: 25-4245 - KYTC Marion Co Call 104 (251015)
 Job Location: Lebanon, KY
 Contractor: Rame Contracting LLC

Plant: 100

Tech: J. Horsley - A

12/29/2025 11:54:50 AM

PC: Celina Goff



Structure ID: 25

P2 BX024060-08LD08-1559

BX FLAT LID 8inW, w/15"x59" HOLE (KYTC DBI-13S)

- P3) 15" x 59" - P.I.P. - BY OTHERS - 8"
- P2) 24" x 60" - BX FLAT LID 8inW, w/15"x59" HOLE (KYTC DBI-13S) F/F - 8"
- P1) 24" x 60" - BOX BASE 8inW, 8inF, Variable Ht F/n - 43"
- 1) CASTING - HOE KY-230-S F/G (SAG)
- 1) SECONDARY POUR
- 1) 24" x 60" - Conseal CS-102 1.00"
- 1) Hole - 28
- 1) Hole - 6

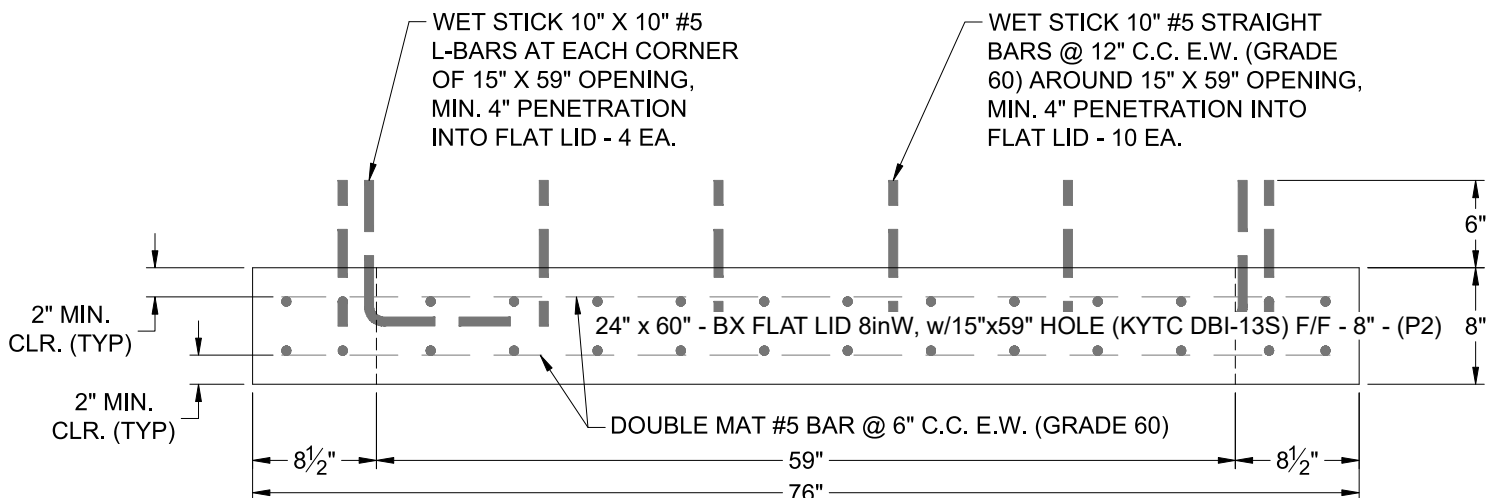
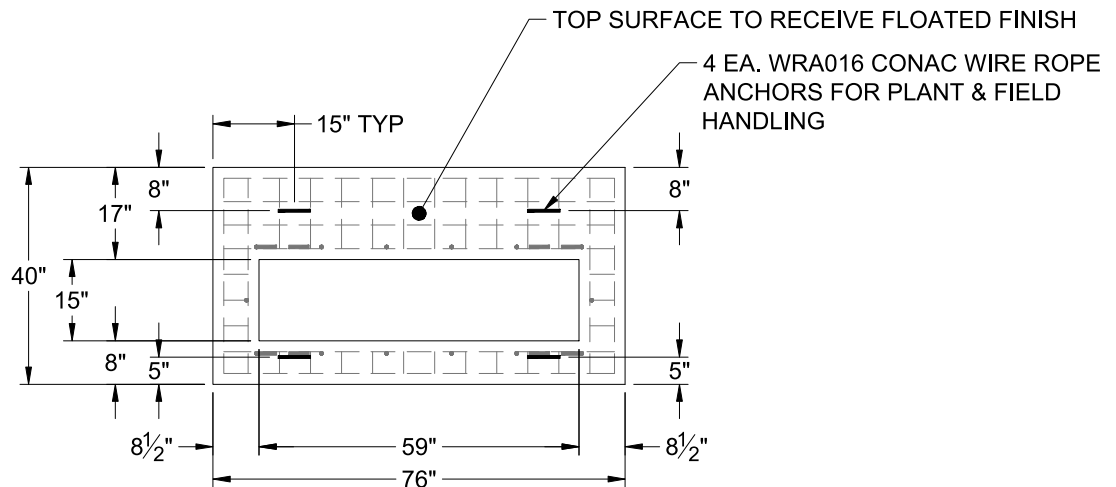
0 lb
 1461 lb
 7382 lb
 474 lb
 0 lb
 0 lb
 0 lb
 0 lb

 9317 lb

Structure Total:

Structure Notes:

- ** KYTC STATE PROJECT **
- 1. HOE KY-230-S FRAME & GRATE (SAG) PROVIDED BY ICAST
- 2. KYTC DBI TYPE 13S / ASTM C-913 SPECS
- 3. CONCRETE: 4,000 PSI AT 28 DAYS
- 4. REINFORCEMENT: DOUBLE MAT #5 BAR @ 6" C.C. E.W. (GRADE 60) - 2" MIN. REBAR CLEARANCE (TYP)
- 5. WET STICK #5 BARS SPACED @ 12" C.C. 6" OUT TOP OF FLAT LID AROUND 15" X 59" OPENING
- 6. LIFTERS: 4 EA. WRA016 CONAC WIRE ROPE ANCHORS FOR PLANT & FIELD HANDLING



Coating (Int):
 Coating (Ext):

Seam Up: Flat
 Seam Dn: Flat

Wall Thickness: 8"

Height (Ext): 8"

Weight (Net): 1461 lb
 Volume (Net): 0.37cu.yd