

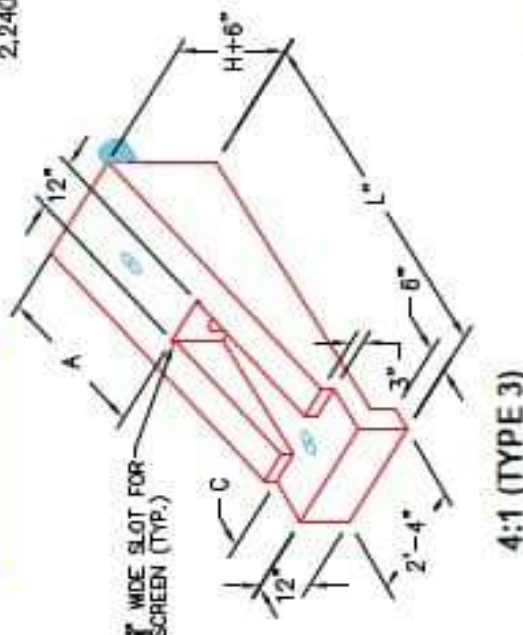
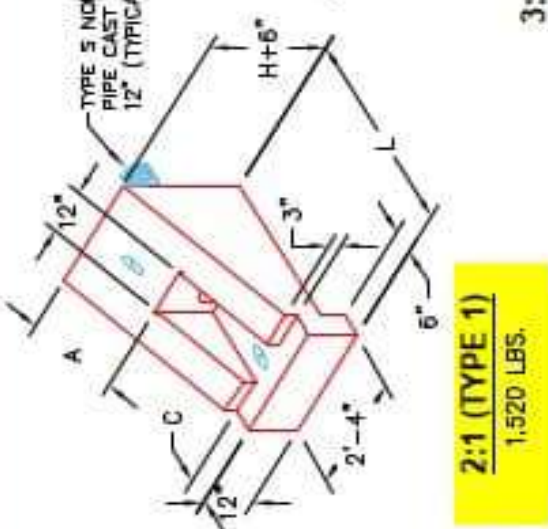
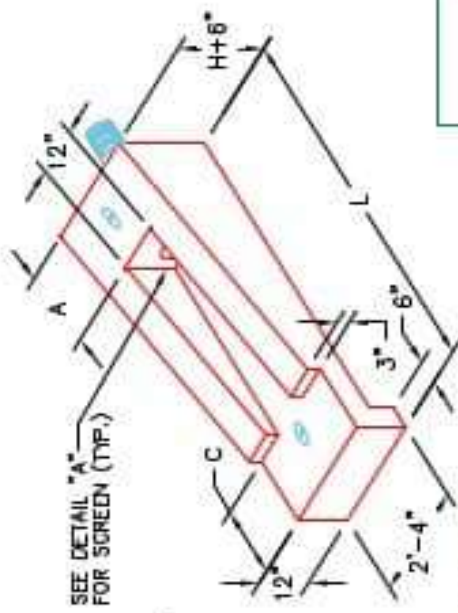
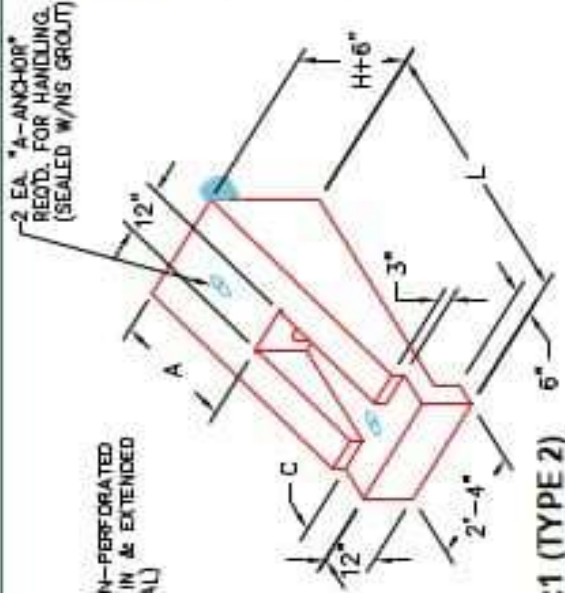
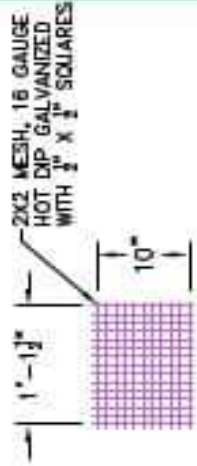


Structure ID: 2-54245 2

P1 HWPP214TY1

4" - HW Perforated Pipe Type 1 (2 to1) F/F

PIPE DIA.	SLOPE	DIMENSIONS				CLASS "A" CONCRETE
		L	H	A	C	
4"	2 : 1	3'-0 1/4"	1'-6"	6"	6"	0.38
AND	3 : 1	5'-1 1/4"	1'-6 1/2"	2'-3"	9"	0.56
6"	4 : 1	6'-3 3/4"	3'-0"	3'-0"	1'-0"	0.74
	5 : 1	7'-2 1/4"	1'-2 1/2"	1'-6"	1'-6"	0.82
	2 : 1	3'-2 1/2"	1'-6"	6"	6"	0.43
8"	3 : 1	5'-2 1/4"	1'-10 3/4"	2'-3"	9"	0.83
	4 : 1	7'-2"	1'-4 3/4"	3'-0"	1'-0"	0.73
	2 : 1	4'-2"	1'-6"	6"	6"	0.47
10"	3 : 1	6'-3"	2'-1"	2'-3"	9"	0.69
	4 : 1	8'-4"	3'-0"	3'-0"	1'-0"	0.91
	5 : 1	9'-6"	1'-7"	1'-6"	1'-6"	0.83



APPROVED FOR DESIGN ONLY

APPROVED FOR CONSTRUCTION

DIVISION OF CONSTRUCTION

INFRASTRUCTURE PRECAST, INC.
 181 WEST 7TH ST. BOONVILLE, KY 40309
 PHONE: (606) 363-5236, FAX: (606) 368-7404

KYTC PERFORATED PIPE HEADWALLS

DRAWING NO: KYTC PP-116 DATE: 12-15-07-21
 REVISION: 011 J.H. HORSLEY, P.E. DRAWN BY: M. H. HORSLEY
 WEB: WWW.ICAST.COM SCALE: N/A

- NOTES:**
1. CONCRETE: KYTC APPROVED.
 2. REINFORCING: #4 BAR @ 12" C/C E.W. - GRADE 60, (WITH 2" CONCRETE COVER MINIMUM)
 3. REINFORCING BARS TO BE TACK WELDED OR TIED.
 4. PIPE AND LIFTING ANCHOR POCKETS TO BE GROUTED WITH KYTC APPROVED NON-SHRINK GROUT.
 5. DRAWING TO BE USED IN CONJUNCTION WITH KYTC STD. DRAWING RDP-010-08 AND THE STANDARD SPECIFICATIONS FOR ROAD AND BRIDGE CONSTRUCTION.
 6. 3" CHAMFER ON ALL EXPOSED EDGES.