

Job Name: 25-4245 - KYTC Marion Co Call 104 (251015)  
 Job Location: Lebanon, KY  
 Contractor: Rame Contracting LLC

Plant: 100  
 12/29/2025 11:54:09 AM

Tech: J. Horsley - A  
 PC: Celina Goff



**Structure ID: 15**

**P1 BX4860-08BAVF**

**BOX BASE 8inW, 8inF, Variable Ht F/n**

- P3) 15" x 59" - P.I.P. - BY OTHERS - 8"
- P2) 48" x 60" - BX FLAT LID 8inW, w/15"x59" HOLE (KYTC DBI-13S) F/F - 8"
- P1) 48" x 60" - BOX BASE 8inW, 8inF, Variable Ht F/n - 44"
- 1) CASTING - HOE KY-230-S F/G (SAG)
- 1) SECONDARY POUR
- 1) 48" x 60" - Conseal CS-102 1.00"
- 1) Hole - 34
- 1) Hole - 22
- 1) Hole - 28
- 2) Hole - 6
- 2) I-Beam Notch n/n - 7"x9"x5"

0 lb  
 2784 lb  
 9099 lb  
 474 lb  
 0 lb  
 0 lb  
 0 lb  
 0 lb  
 0 lb  
 0 lb  
 0 lb  
 0 lb  
 Structure Total: 12357 lb

- Structure Notes:**  
 \*\* KYTC STATE PROJECT \*\*
1. HOE KY-230-S FRAME & GRATE (SAG) PROVIDED BY ICAST
  2. KYTC DBI TYPE 13S / ASTM C-913 SPECS
  3. CONCRETE: 4,000 PSI AT 28 DAYS
  4. REINFORCEMENT: #5 BAR @ 12" C.C. E.W. (GRADE 60) - 2" MIN. REBAR CLEARANCE (TYP)
  5. NO INVERT CHANNEL
  6. WET STICK 24" X 24" #5 L-BARS SPACED @ 12" C.C. E.W. (GRADE 60) OUT OF FLOOR FOR WALL POUR TIE-IN (SEE L-BAR DETAIL)

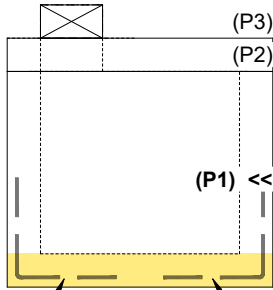
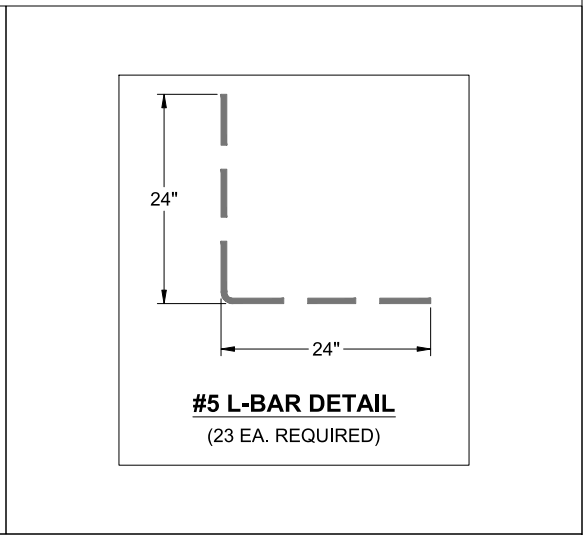
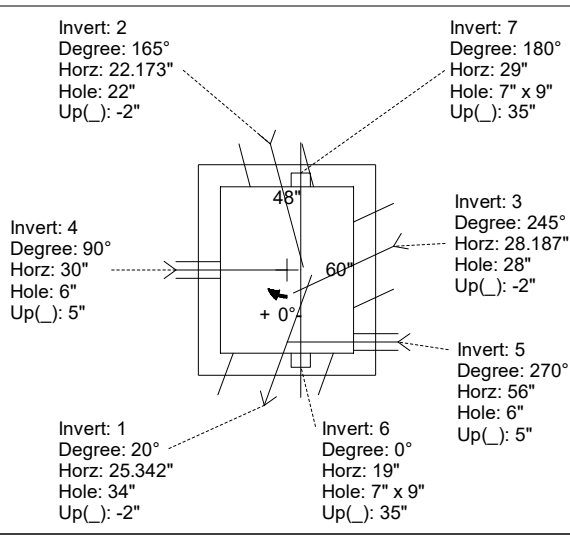
**FIRST POUR (FLOOR): 3,265 LBS**  
**SECOND POUR (WALLS): 5,834 LBS**

Rim: 836.75' Rim to Invert: 5' Slack: 0" Sump: 0" Step Position:

Position	Elev	Angle	Ext. (cw)	Pipe	Pipe OD	Connector	Hole	Horz Size	Up ( )	Offset
Invert 1	831.75'	20°	36.253"	30" CMP	31"	Hole 34	34"	36.182"	-2"	-9"
Invert 2	831.75'	165°	28.03"	18" CMP	19"	Hole 22	22"	22.776"	-2"	6"
Invert 3	831.75'	245°	32.457"	24" CMP	25"	Hole 28	28"	30.895"	-2"	8.5"
Invert 4	832.25'	90°	38"	4" HDPE (perf pipe)	4.8"	Hole 6	6"	6"	5"	0"
Invert 5	832.25'	270°	64"	4" HDPE (perf pipe)	4.8"	Hole 6	6"	6"	5"	26"
Invert 6	835.04'	0°	27"	7" x 9" I-Beam Notch	7" x 9"	I-Beam Notch 7"x9"x5"	7" x 9"	7"	35"	-5"
Invert 7	835.04'	180°	37"	7" x 9" I-Beam Notch	7" x 9"	I-Beam Notch 7"x9"x5"	7" x 9"	7"	35"	5"
Invert 8										

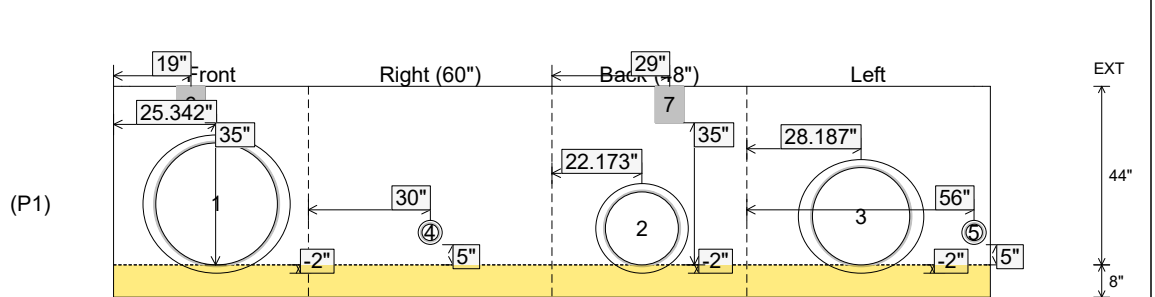
RIGHT-SIDE UP VIEW (int. dimensions)

UPSIDE-DOWN VIEW (int. dimensions)



WET STICK #5 L-BARS SPACED @ 12" C.C. (GRADE 60) OUT OF FLOOR FOR WALL POUR TIE-IN (SEE L-BAR DETAIL)

INSIDE WALL DIMENSIONS



Coating (Int):  
 Coating (Ext):

Seam Up: Flat  
 Seam Dn: n/a

Wall Thickness: 8"  
 Floor Height: 8"

Height (Int): 44"  
 Height (Ext): 52"

Weight (Net): 9099 lb  
 Volume (Net): 2.32cu.yd

